



S-MODE Safety Brief

2022 IOP-1 Field Campaign

Purpose and Scope



- 1) The purpose of this training is to provide health and safety rules and guidelines for the NASA ARC airborne operations component of the Fall 2022 S-MODE IOP-1 Field Campaign.
- 2) There are separate safety plans addressing the following areas:
 1. Instrument integration activities at AFRC and LaRC
 2. Flight operations onboard AFRC and LaRC aircraft
 3. Twin Otter International, Ltd. (TOIL) flight operations
 4. Research vessel operations
 5. Autonomous Surface Vehicle (ASV) operations

S-MODE Mission Management



NASA HQ and Earth System Science Pathfinder Program Office:

Nadya Vinogradova-Shiffer, Program Scientist – Physical Oceanography Program, NASA HQ

Bruce Tagg, NASA Airborne Science Program Director, NASA HQ

Gregory Stover, EVS-3 Program Manager, NASA LaRC/ESSP PO

Melissa Yang Martin, EVS-3 Mission Manager, NASA LaRC/ESSP PO

Mission Science:

J. Thomas Farrar, Principal Investigator, Woods Hole Oceanographic Institution

Ernesto Rodriguez, Deputy PI for Airborne Operations, NASA JPL

Eric D'Asaro, Deputy PI for Science Planning and Data Analysis, University of Washington

Andrey Shcherbina, Deputy PI for In Situ Operations, University of Washington

Instrument Principal Investigators:

Dragana Perkovic-Martin, DopplerScatt PI, NASA JPL

Jeroen Molemaker, MOSES PI, UCLA

David Thompson, PRISM PI, NASA JPL

Luc Lenain, MASS PI, Scripps Institution of Oceanography

S-MODE Mission Management



NASA ARC – Earth Science Project Office:

Erin Czech, Project Manager, NASA ARC/ESPO

Sommer Nicholas, Deputy Project Manager, NASA ARC/ESPO

Judy Alfter, Project Coordinator, NASA ARC/ESPO

Sam Kim, IT Systems Administrator, NASA ARC/ESPO

NASA AFRC – B200 Flight Ops:

Ken Norlin, B200 Airborne Science Manager, NASA AFRC

Jeff Borton, B200 Project Pilot, NASA AFRC

Hernan Posada, B200 Project Pilot, NASA AFRC

Joseph Piotrowski, B200 Operations Engineer, NASA AFRC

NASA LaRC – G-III Flight Ops:

Brian Baxley, Branch Head - Aircraft Operations and Engineering, NASA LaRC/RSD

Gregory Slover, G-III Project Pilot, NASA LaRC/RSD

Daniel Healey, G-III Project Planner, NASA LaRC/RSD

S-MODE Mission Management



Important Cell Phone Numbers

NASA ARC Team

Erin Czech (PM)	650-499-6406	Oct 6-28
Sam Kim (IT Support)	650-935-0840	Oct 3-19
Marilyn Vasques (Site Mgr)	650-417-8796	Oct 3-7
Dan Chirica (Site Mgr)	650-318-8257	Oct 3-28
Randy Hobbs (Flight Line Logistics)	650-605-5735	Oct 3-28

B200 and G-III Leads

Joe Piotrowski (B200 Ops)	661-674-5962	Oct 5-10
Hernan Posada (B200 Pilot)	661-341-4558	Oct 6-17
Jeff Borton (B200 Pilot)	316-350-4968	Oct 18-28
Mario Soto (B200 Crew Chief)	760-617-0420	Oct 6-28
Greg Slover (G-III Pilot)	757-864-8135	Oct 3-16
Brian Baxley (G-III Pilot)	757-272-4484	Oct 16-28
Cecil Garber (G-III Crew Chief)	757-864-3048	Oct 3-28

NASA Anti-Harassment Policy



- Harassment of any kind will not be tolerated from any NASA civil servant, NASA contractor, or NASA grantee.
- If you feel you have been harassed or witnessed harassment/misbehavior in any manner, please contact NASA Ames Ombudsperson Heather Hawley at heather.g.hawley@nasa.gov.
NOTE: the NASA Ombuds program is an informal, independent, confidential, and neutral means of communicating and facilitating the resolution of safety, organizational performance, and mission-related issues without fear of retaliation.
- If it is determined that NASA policy has been violated, mission management reserves the right to remove any offending individual from all flight operations.
 - If the offending individual is a NASA civil servant, they will be sent home from the field.
 - If the offending individual is a NASA contractor, their contract management and NASA Procurement will be notified of the incident.
 - If the offending individual is a NASA grantee, then the appropriate individuals (Mission PI, NASA Program Office, etc.) will be notified of the incident.

The full NASA Anti-Harassment policy can be downloaded at
<https://drive.google.com/file/d/1qZYQJY0yl3lnfPFc16J5dfWKdKafawli>

General Safety



IN AN EMERGENCY:

- Call **9-1-1** from any Ames phone
- Call **650-604-5555** from cell phones

Center Emergency Status:

- **650-604-9999** – Centerwide Emergency Status Report
- Center Emergency Radio Station, **AM 1700**

If you are injured:

- **650-604-5287** – Immediately Report to the [Ames Health Unit](#) (Building 215)
- After hours call **911**

General Safety

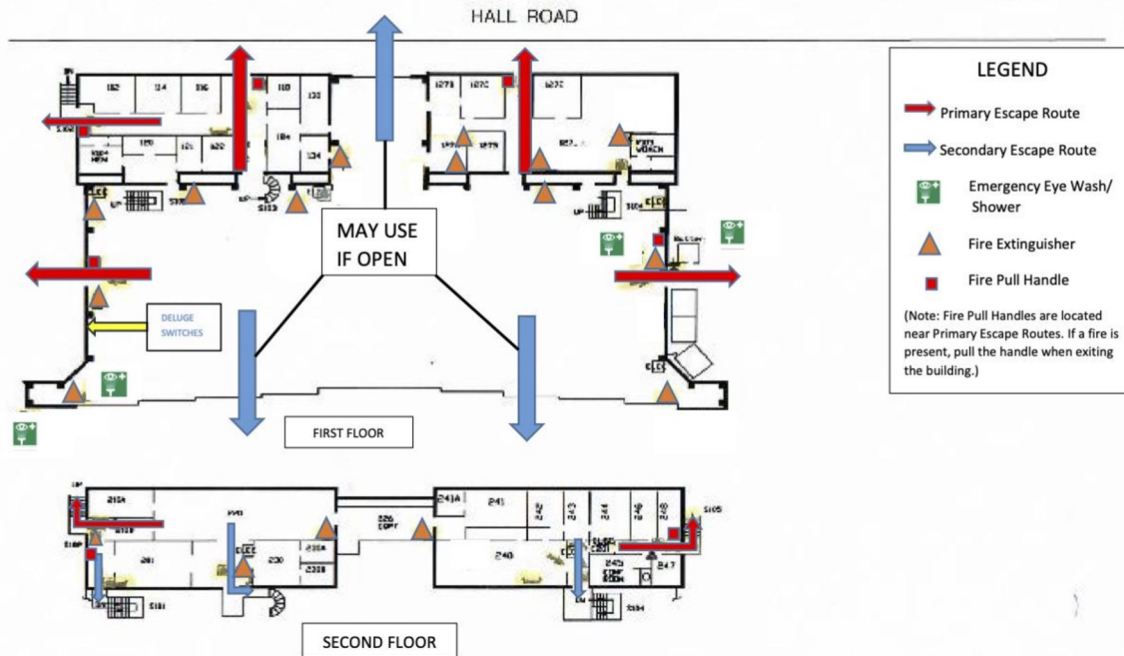


N-248



Assembly Area

Evacuation Plan/Emergency Equipment



In case of a fire alarm or other emergency, the primary escape routes from Bldg N-248 are indicated by the red arrows.

All N248 occupants shall go directly to the Assembly Area across Hall Road indicated by the gold star and wait until the Ames Fire Department gives an “all clear” to return the building.

In the event of an evacuation, leave all belongings and exit the building immediately.

General Safety



- Closed-toe shoes are required in the hangar and on the ramp. No high heels, sandals or open-toes or 'webbed' shoes are allowed.
- No smoking is allowed in any building. Smoking is only allowed in outside areas where designated. Be aware that there are fuels and other hazards nearby.
- Boxes of hearing protection plugs will be available in the second floor office space in Building N248.
- If you bring hazardous materials into the hangar, please provide ESPO a copy of the SDS in advance.
- Use proper personal protective equipment (PPE) when you are handling hazardous products/materials or performing tasks that would require additional protection.
- Be aware of a loud bell that rings while hangar doors are being opened or closed.
- Always make sure someone in your group knows your whereabouts in case of an emergency.
- 24/7 access – the last one out must turn off the lights. See a member of the ESPO team if you are unsure how to do this.

Current ARC Center Guidance for COVID-19 (as of 9/21/22)



- As of 9/21/22, NASA ARC (Santa Clara County) is in the low (green) COVID-19 Community Level.
- Face masks are currently not required indoors at Ames, unless an area is specifically posted that masks are required. However, a face mask may be required in some circumstances, such as a recent exposure to COVID-19 or a recent COVID-19 diagnosis.
- Everyone may also wear a mask if they wish to do so.
- Project management will alert the team if there has been a change in the Santa Clara County COVID-19 Community Level, or if there is any change to the Ames COVID-19 policies for working on base.
- In general, the COVID-19 guidelines throughout NASA are based on the latest CDC recommendations for [what to do when you are sick](#) (i.e., isolation) and [what to do if you were exposed to someone who is sick](#).

CDC Guidelines



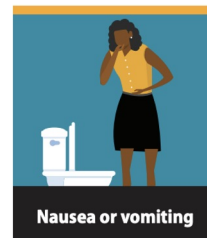
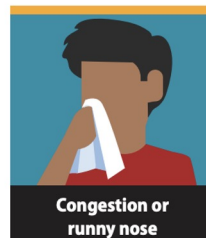
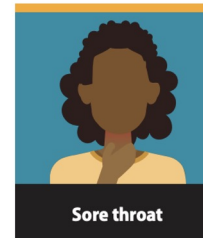
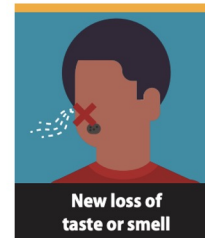
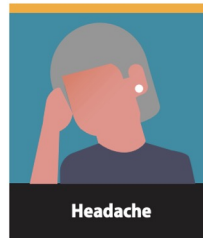
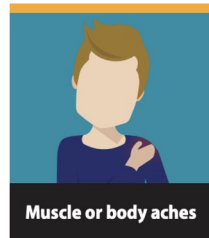
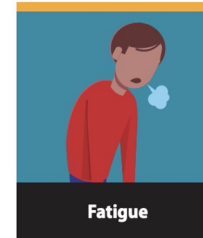
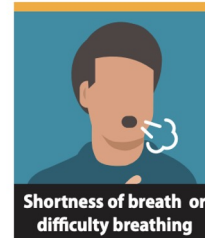
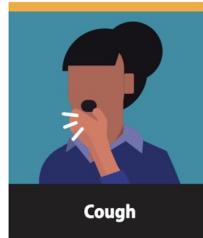
If you begin to experience COVID-19 symptoms while deployed for S-MODE, then you shall take the following steps:

- Do not report to work and self-isolate. If at work, put on a high-quality mask (e.g., N95, KN95) and go back to your hotel immediately.
- Take a COVID-19 test. ESPO will supply you with rapid antigen tests.
- Follow the CDC guidelines for [isolation](#) if your test is positive.
- Notify your supervisor and the S-MODE project manager as soon as possible by phone or email, even if on the weekend.
- Take care of yourself. Get rest and stay hydrated. Take over-the-counter medicines, such as acetaminophen, to help you feel better.
- Stay in touch with your doctor. Call before you get medical care. Be sure to get care if you have trouble breathing, or have any other [emergency warning signs](#), or if you think it is an emergency.
- You will be able to end your isolation and return to work at the discretion of the Ames Chief Medical Officer (CMO), who will work in consultation with the AFRC and LaRC CMOs.

COVID-19 Symptoms



Patients with COVID-19 may have these symptoms:



COVID-19 Response Plan



Sickness or Confirmed COVID-19 Test During Deployment at ARC

If you begin to experience COVID-19 symptoms, please take the following steps:

- Do not report to work and self-isolate. If at work, put on a high-quality mask (e.g., N95, KN95) and go back to your hotel immediately.
- Take a COVID-19 test. ESPO will supply you with rapid antigen tests.
- Follow the CDC guidelines for [isolation](#) if your test is positive.
- Notify your supervisor and the S-MODE project manager as soon as possible by phone or email, even if on the weekend.
- Take care of yourself. Get rest and stay hydrated. Take over-the-counter medicines, such as acetaminophen, to help you feel better.
- Stay in touch with your doctor. Call before you get medical care. Be sure to get care if you have trouble breathing, or have any other [emergency warning signs](#), or if you think it is an emergency.
- You will be able to end your isolation and return to work at the discretion of the Ames Chief Medical Officer (CMO), who will work in consultation with the AFRC and LaRC CMOs.

COVID-19 Testing Support



- ESPO will have a supply of rapid antigen COVID-19 tests available for use.
- If after consultation with their personal physician, it is determined that the participant should take a COVID-19 PCR test, the participant shall get tested as soon as possible. Contact ESPO for recommendations on local testing locations.
- Note that there are no out-of-pocket costs for COVID-19 testing in California. An insured person can get a COVID-19 test when needed by any provider, in or out of their health plan network, at no cost. If you are uninsured, the government pays for your test.

Waiting for Test Results



While waiting for a test result, the participant should follow the guidance found at <https://www.cdc.gov/coronavirus/2019-ncov/if-you-are-sick/steps-when-sick.html> and <https://www.cdc.gov/coronavirus/2019-ncov/your-health/isolation.html>

Other Mission Participants

While a participant waits for test results, the S-MODE PI and PM will act on the advice of the ARC CMO, and in consultation with ARC, AFRC and LaRC management, with regard to continuing mission operations.

In the Event of a Confirmed COVID-19 Case



If there is a known case of COVID among the S-MODE participants during IOP-1 airborne operations, the following steps shall be taken:

- Wear a high-quality mask as soon as you find out you were exposed and continue to wear a mask until instructed otherwise by project management.
- Follow the latest CDC guidance for [exposure](#).

