

S-MODE

AIRBORNE OPERATIONS DEPLOYMENT GUIDE

NASA AMES RESEARCH CENTER, CALIFORNIA



NASA Earth Science Project Office

PROJECT DATES: 10/06/2022 -10/28/2022

LAST UPDATED 09/13/2022

TABLE OF CONTENTS

Introduction	3
Area Maps	3
Base Access	3
Badging	3
Operations Center	3
Building N248	3
Network	5
Operations	5
Mission Schedule	5
Communications	6
Lodging	6
Residence Inn by Marriott Palo Alto Mountain View	6
Navy Lodge Moffett Field	7
Shipping to NASA Ames Research Center	8
Shipping Address	8
Around Town	8
Restaurants	8
Grocery Stores	9
Pharmacies	9
COVID-19 Guidance	9
NASA ARC and Santa Clara County Guidelines	9
CDC Guidelines	10
Medical and Emergency Information	10
General Safety	11
Lab, Hangar, and Ramp Safety	11
S-MODE Points of Contact	12

INTRODUCTION

This deployment guide is for S-MODE IOP-1 Airborne Operations at NASA Ames Research Center (ARC) in Moffett Field, CA. This guide was created to help you become familiar with the area and to answer some of the questions you may have when you arrive at NASA ARC.

NASA Ames Research Center is located in the heart of California's Silicon Valley. For more than 75 years, Ames has led NASA in conducting world-class research and development in aeronautics, exploration technology and science aligned with the center's core capabilities.

Location: [Moffett Field, CA](#)

AREA MAPS

[Moffett Federal Airfield](#) (via Google Maps)

[Link to interactive map of NASA Ames Research Center](#)

[Link to static map of Moffett Field](#)

BASE ACCESS

BADGING

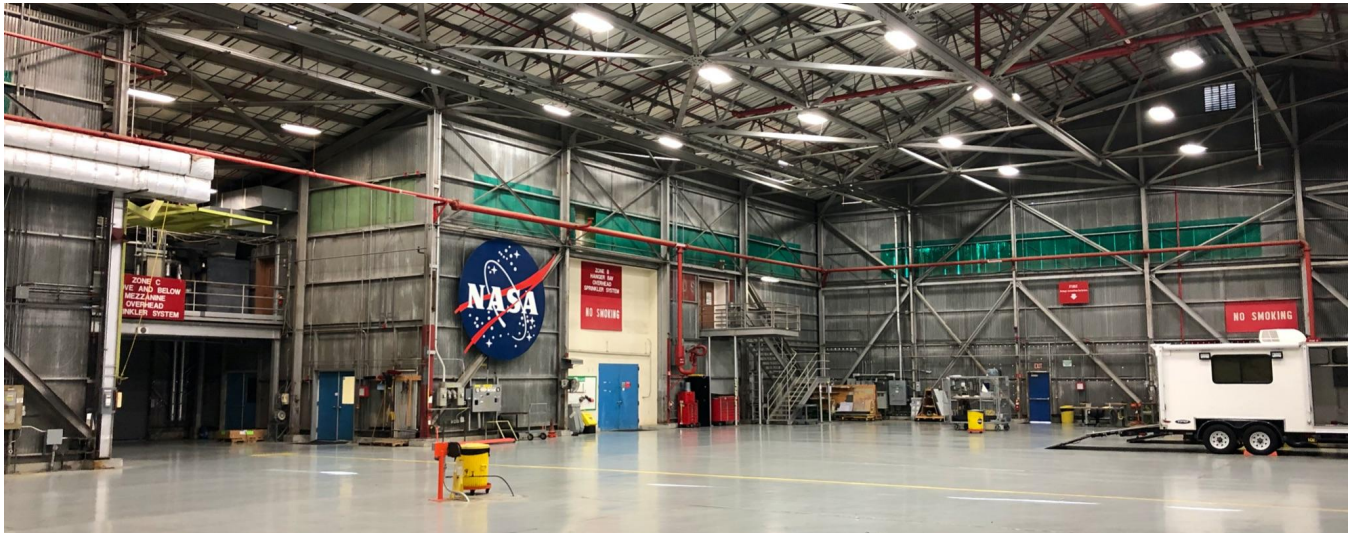
NASA PIV Badges - All NASA Access Management System (NAMS) requests for visitors in possession of a valid NASA PIV badge have been processed. Your PIV badge will work to open the door on both the west and east entrances.

Foreign Nationals (FN) - All FN visitors must check in at NASA Visitor Badging (Building 26) between the hours of 6am - 5pm to receive their badge. You must bring your passport and visa (or valid DS-2019). The full list of acceptable I-9 documentation can be found at https://www.nasa.gov/pdf/474227main_acceptable_IDs.pdf. ESPO will provide an escort at all times while FNs need access to the Ames campus.

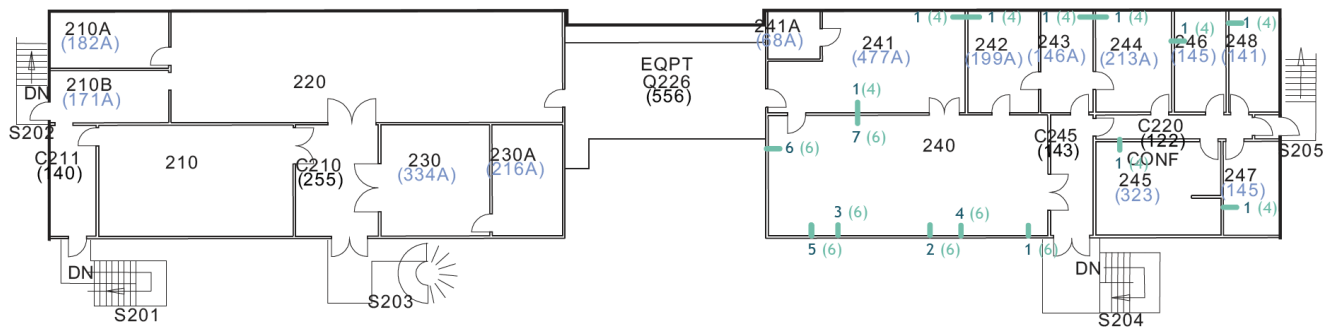
OPERATIONS CENTER

BUILDING N248

The operations center for AFRC B200 and LaRC G-III flight operations will be located in Ames Building N248, which is located inside [Ames Research Center on Hall Road](#). Parking for N248 is available in the large parking lot in front of the building. Both men's and women's restrooms are located on the west side of the first floor.



ARC Building N248 hangar floor



ARC Building N248 second floor office space for S-MODE mission operations.

With the exception of a small office for ground crew on the hangar floor, all other workspaces will be located on the second floor of the building. There is a refrigerator, as well as water and coffee, in room 245. This is also a conference room so please be mindful if there is a briefing in progress.

N248 Second Floor Work Space Occupancy

Room	Function
210	G-III conference room, multi-aircraft briefings
220	Work space for G-III pilots and crew
240	DopplerScatt, MOSES, PRISM work space
241	ESPO, printer, comms closet
242	Small conference room
243	ESPO Office
244	Work space for AFRC pilots
245	B200 conference room, refrigerator, coffee, water

NETWORK

Wireless internet will be available in all offices and on the hangar floor. NASA AFRC and LaRC visitors can seamlessly connect to the NASA wireless network as they do at their home center. In addition, hard wired internet connections will be available for participants from AFRC and LaRC.

JPL employees and non-NASA participants will be able to use the commercial internet service that will be available on the second floor. Network name and password will be provided when on site.

FLIGHT OPERATIONS

MISSION SCHEDULE

The high level S-MODE mission schedule can be found at <https://espo.nasa.gov/s-mode/calendar>.

The table below shows, in general, how a typical day may go during S-MODE operations. This is subject to change based on a number of factors including weather and PI discretion.

Time	Activity/Participants	Inputs	Outcome
2:30pm-3:30pm	Science team telecon to review next day plans	Weather and ocean forecasts, data summary for previous day, ship and plan reports for current day	Determines plan for the next day, and general goals for the next 3-5 days
5:00pm-5:30pm	Preliminary go/no-go for planes. PI, Deputy PIs, instrument leads, pilots	Decisions from science team meeting	Preliminary go/no-go decision. Waypoints and flight times for next day's flights
5:30pm-6:30pm	Flight plan by pilots	Outputs from 5pm go/no-go meeting	Notional flight plans for next day
7:00pm-7:00am	Airplane near real-time data processing by instrument teams	Data from day's flights	Visualization images for previous day data collection
6:30am-7:00am	Finalize morning flight go/no-go decision. PI, deputy PIs, instrument leads, instrument operators	Updated weather forecasts, ship situational report	Pilots contacted for go/no-go decision
7:00am-1:00pm	Flights for selected instruments. Pilots, instrument operators, ESPO, Code JO mission support personnel	Go/no-go morning decision	Morning flights for selected instruments
8:00am-5:00pm	Analysis of previous day data, ship data, satellite data.	NRT data, airborne data from previous day, satellite data, weather and ocean models	Summary situational reports at noon and 5pm
11:00-11:30am	Finalize afternoon flight go/no-go decision. PI, deputy PIs, instrument leads, instrument operators	Updated weather forecasts, ship situational report	Pilots contacted for go decision

1:00pm-7:00pm	Flights for selected instruments. Pilots, instrument operators, ESPO, Code JO mission support personnel	Go/no-go afternoon decision	Afternoon flights for selected instruments
---------------	---	-----------------------------	--

COMMUNICATIONS

A daily plan of the day (POD) and any other pertinent information regarding the S-MODE field campaign will be shared on multiple platforms, including email, Slack, the [ESPO S-MODE website](#), and the [UW S-MODE Google Drive](#).

If you are having trouble accessing any of these platforms, please contact erin.czech@nasa.gov.

LODGING

RESIDENCE INN BY MARRIOTT PALO ALTO MOUNTAIN VIEW

ESPO has set up a room block at the **Residence Inn by Marriott Palo Alto Mountain View** in Mountain View, CA. Reservations should be made no later than Saturday, September 17th. Reservations can be made by either 1) calling 650-940-1300 and requesting the group rate for “NASA S-MODE Group” or 2) online at <https://www.marriott.com/event-reservations/reservation-link.mi?id=1648758298142&key=GRP&app=resvlink>

Please be prepared to provide a credit card number for the room reservation. The hotel has a 24-hour cancellation policy for individual reservations. If you do not make your reservation on or before **September 17, 2022**, rooms will only be offered at the standard rate being offered by the hotel at the time of booking.

If you have any lodging questions please email: judy.alfter@nasa.gov.

[Residence Inn by Marriott Palo Alto Mountain View](#)

Address: [1854 El Camino Real West, Mountain View, CA 94040](#)

When: October 3, 2021 - October 30, 2022

Last Day to Book: Saturday, September 17, 2022

Studio Room Rate: \$179.00 per night

Front Desk: 650-969-4997

[Click Here to Make a Reservation](#)



Residence Inn by Marriott, Mt. View

NAVY LODGE MOFFETT FIELD

Although we have no formal agreement with this venue, a limited number of rooms may be available at the Navy Lodge in Moffett Field, CA. Please call the lodge directly if you are interested: 650-962-1542. Mention that you are with the NASA S-MODE group.

<https://navy-lodge.com/Moffett-Field>

Please be prepared to provide a credit card number for the room reservation. The hotel has a 7-day cancellation policy for individual reservations. Cancellations made less than 7-days out from the check-in date will result in the guest being billed for 1-night's room stay plus tax to the credit card on file.

If you have any lodging questions please email: judy.alfter@nasa.gov.

[Navy Lodge Moffett Field](#)

Address: [593 Vernon Avenue, Mountain View, CA 94043](#)

Room Rate: \$125.00 per night

Front Desk: 650-962-1542



Navy Lodge, Moffett Field

SHIPPING TO NASA AMES RESEARCH CENTER

SHIPPING ADDRESS

NASA Ames Research Center
Attn: Erin Czech (650) 499-6406
Building 255 Shipping and Receiving
MOFFETT FIELD, CA 94035

Please pack any fragile or sensitive equipment in hard shell cases with plenty of cushioning and avoid shipping loose items whenever possible.

Before you ship your items to ARC, please email Erin Czech at erin.czech@nasa.gov with tracking information.

AROUND TOWN

RESTAURANTS

LINKS: [Mountain View Voice - Suggested Restaurants List](#)

[UberEats - Serving Ames Research Center](#)

[Mountain View Downtown Dining Guide](#)

GROCERY STORES

[SAFEWAY](#)

570 N. Shoreline Blvd.
Mountain View, CA 94043
Store Phone: (650) 961-4868
Pharmacy Phone: (650) 961-4851
[Directions to SAFEWAY](#)

[AVA'S DOWNTOWN MARKET & DELI](#)

340 Castro Street
Mountain View, CA 94041
Store Phone: (650) 961-5652
[Directions to Ava's](#)

[WHOLE FOODS MARKET in LOS ALTOS, CA](#)

4800 El Camino Real
Los Altos, CA 94022
Store Phone: (650) 559-0300
[Directions to Whole Foods in Los Altos, CA](#)

PHARMACIES

[SAFEWAY](#)

570 N. Shoreline Blvd.
Mountain View, CA 94043
Store Phone: (650) 961-4868
Pharmacy Phone: (650) 961-4851
[Directions to SAFEWAY](#)

[CVS](#)

850 California St.
Mountain View, CA 94041
Phone: (650) 691-4004
[Directions to CVS](#)

COVID-19 GUIDANCE

When working on base at ARC, all S-MODE participants will be required to follow the COVID-19 rules and regulations for work onsite at ARC. The exception to this rule is for work on the aircraft. AFRC and LaRC rules apply for any work that occurs on each center's respective aircraft while these aircraft are at ARC.

NASA ARC AND SANTA CLARA COUNTY GUIDELINES

As of 9/9/22, NASA ARC (Santa Clara County) is in the low (green) [COVID-19 Community Level](#). Face masks are currently not required indoors at Ames, unless an area is specifically posted that masks are required. However, a

face mask may be required in some circumstances, such as a recent exposure to COVID-19 or a recent COVID-19 diagnosis. Everyone may also wear a mask if they wish to do so.

Project management will alert the team if there has been a change in the Santa Clara County COVID-19 Community Level, or if there is any change to the Ames COVID-19 policies for working on base.

The S-MODE office spaces in N248 will provide ample opportunity for participants to social distance. There will be a supply of Personal Protective Equipment (PPE) including masks, hand sanitizer, cleaning products and self-test kits available at several locations throughout N248 and both hangars.

Below are a few additional recommendations for S-MODE participants:

- Practice social distancing when possible, both on and off base
- Clean your work area on a daily basis with the supplies provided
- Practice good hygiene including washing your hands and/or using hand sanitizer

CDC GUIDELINES

In general, the COVID-19 guidelines throughout NASA are based on the latest CDC recommendations for [what to do when you are sick](#) (i.e., isolation) and [what to do if you were exposed to someone who is sick](#).

If you begin to experience COVID-19 symptoms while deployed for S-MODE, then you shall take the following steps:

- **Do not report to work and self-isolate. If at work, put on a high-quality mask (e.g., N95, KN95) and go back to your hotel immediately.**
- Take a COVID-19 test. ESPO will supply you with rapid antigen tests.
- Follow the CDC guidelines for [isolation](#) if your test is positive.
- Notify your supervisor and the S-MODE project manager as soon as possible by phone or email, even if on the weekend.
- Take care of yourself. Get rest and stay hydrated. Take over-the-counter medicines, such as acetaminophen, to help you feel better.
- Stay in touch with your doctor. Call before you get medical care. Be sure to get care if you have trouble breathing, or have any other [emergency warning signs](#), or if you think it is an emergency.
- You will be able to end your isolation and return to work at the discretion of the Ames Chief Medical Officer (CMO), who will work in consultation with the AFRC and LaRC CMOs.

If there is a known case of COVID among the S-MODE participants during IOP-1 airborne operations, the following steps shall be taken:

- Wear a high-quality mask as soon as you find out you were exposed, and continue to wear a mask until instructed otherwise by project management.
- Follow the latest CDC guidance for [exposure](#).

MEDICAL AND EMERGENCY INFORMATION

MOUNTAIN VIEW, CA HOSPITALS AND URGENT CARE CENTERS

[EL CAMINO HOSPITAL MOUNTAIN VIEW](#)
2500 Grant Rd.

Mountain View, CA 94040
(650) 940-7000

[Directions from AMES RESEARCH CENTER](#)

[MOUNTAIN VIEW CENTER](#)

701 East El Camino Real
Mountain View, CA, 94040
(650) 934-7000

[Directions from AMES RESEARCH CENTER](#)

URGENT CARE CENTERS

[EL CAMINO URGENT CARE](#)

1150 W. El Camino Real
Mountain View, CA 94040
(650) 695-5008

[Directions from AMES RESEARCH CENTER](#)

[SUTTER URGENT CARE - MOUNTAIN VIEW, CA](#)

Located in: Sutter Health Palo Alto Medical Foundation - Mountain View Center

Address: 701 E El Camino Real, Mountain View, CA 94040

Phone: (650) 934-7800

[Directions from AMES RESEARCH CENTER](#)

GENERAL SAFETY

LAB, HANGAR, AND RAMP SAFETY

- Closed-toe shoes are required in the hangar and on the ramp. No high heels, sandals or open-toes or 'webbed' shoes are allowed.
- Long pants are required when aboard the aircraft.
- No smoking is allowed in any building. Smoking is only allowed in outside areas where designated. Be aware that there are fuels and other hazards nearby.
- Boxes of hearing protection plugs will be available on the hangar floor in Building N248.
- If you bring hazardous materials into the hangar, please provide ESPO a copy of the SDS in advance.
- Use proper personal protective equipment (PPE) when you are handling hazardous products/materials or performing tasks that would require additional protection.
- Be aware of a loud bell that rings while hangar doors are being opened or closed.
- Always make sure someone in your group knows your whereabouts in case of an emergency.
- 24/7 access – the last one out must turn off the lights. See a member of the ESPO team if you are unsure how to do this.
- Safety vests will be provided if you do not have one. Wear it at all times while on the flight line.

S-MODE POINTS OF CONTACT

Aircraft Project Management

Joseph C. Piotrowski, B-200 (N801NA) Operations Engineer
Organization: NASA Armstrong (Dryden) Flight Research Center
Cell: (661) 674-5962
Office: (661) 276-5733
Email: joseph.c.piotrowski@nasa.gov

Gregory L. Slover, G-III (N520NA) Pilot
Organization: NASA Langley Research Center
Cell: (757) 751-2851
Office: (757) 864-8135
Email: gregory.l.slover@nasa.gov

ESPO Project Management

Erin Czech, S-MODE Project Manager
Cell: (650) 499-6406
Office: (650) 604-1655
Email: erin.czech@nasa.gov