

S-MODE

AIRBORNE OPERATIONS DEPLOYMENT GUIDE

AMES RESEARCH CENTER, CALIFORNIA



NASA Earth Science Project Office

PROJECT DATES: 10/18/2021 -11/08/2021

LAST UPDATED 09/10/2021

TABLE OF CONTENTS

Introduction	3
Area Maps	3
Base Access	3
Mandatory COVID-19 Training	3
Badging	3
Operations Center	4
Building N248	4
Network	5
Operations	5
Mission Schedule	5
Communications	6
Lodging	6
Larkspur Landing	6
Shipping to NASA Ames Research Center	7
Shipping Address	7
Around Town	8
Restaurants	8
Grocery Stores	8
Pharmacies	8
COVID-19 Protocols and Mitigation	9
Medical and Emergency Information	9
General Safety	10
Lab, Hangar, and Ramp Safety	10
S-MODE Points of Contact	11

INTRODUCTION

This deployment guide is for the S-MODE Pilot Campaign Airborne Operations at NASA Ames Research Center in Moffett Field, CA. This guide was created to help you become familiar with the area and to answer some of the questions you may have when you arrive at Ames Research Center.

NASA Ames Research Center is located in the heart of California's Silicon Valley. For more than 75 years, Ames has led NASA in conducting world-class research and development in aeronautics, exploration technology and science aligned with the center's core capabilities.

Location: [Moffett Field, CA](#)

AREA MAPS

[Moffett Federal Airfield](#) (via Google Maps)

[Link to interactive map of NASA Ames Research Center](#)

[Link to static map of Moffett Field](#)

BASE ACCESS

MANDATORY COVID-19 TRAINING

Prior to being granted access to NASA Ames, there are four requirements that must be met by all visitors:

1. All participants coming to Ames for S-MODE must be vaccinated. All personnel in possession of a NASA PIV badge have already met this requirement by submitting their vaccination attestation through their respective center. If you are receiving a visitor badge, you will have to fill out a [Certification of Vaccination](#) at the badging office.
2. Complete the [SATERN](#) course ARC-003-08 "COVID-19 and Working On-Site after June 2021" and send the certificate of completion to erin.czech@nasa.gov
3. Have your supervisor answer questions 2-4 and 9-11 in the bottom section ("Actions to complete before starting on-site work") of the [Supervisor's Return to On-site Work Checklist](#). Your supervisor should return the checklist to erin.czech@nasa.gov or respond in the affirmative that the answer to these questions is "Yes".
4. Attend a mandatory COVID-19 safety briefing. This briefing will be held on Webex and is tentatively scheduled for the week of September 27.

BADGING

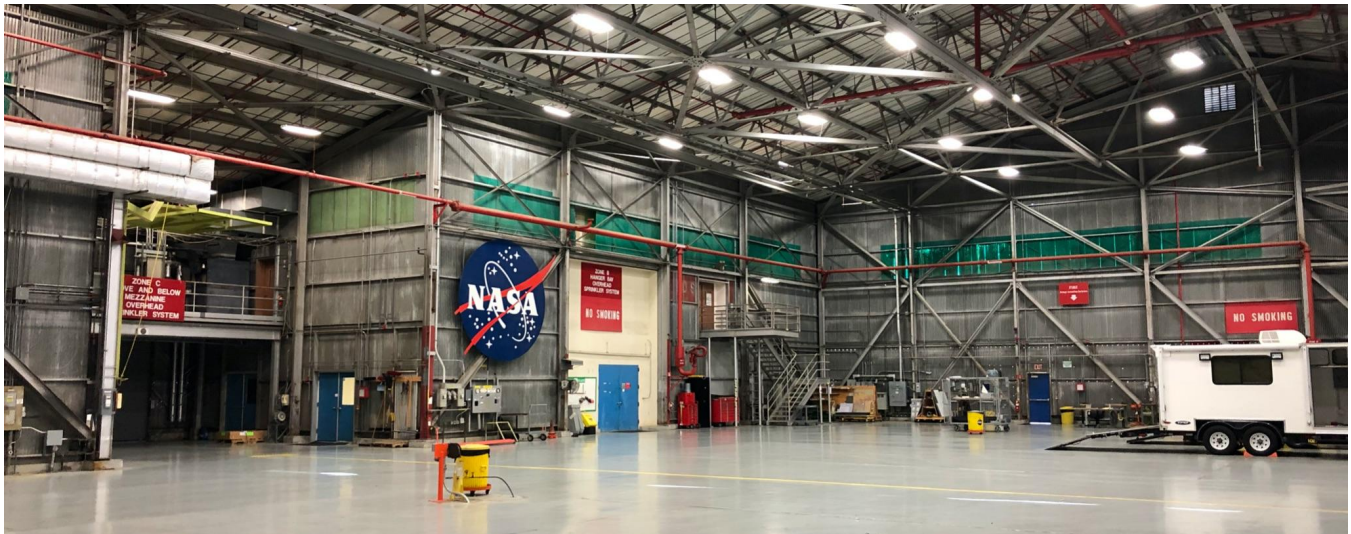
NASA PIV Badges - ESPO will submit all necessary NASA Access Management System (NAMS) requests for all visitors in possession of a valid NASA PIV badge.

Foreign Nationals (FN) - All FN visitors must check in at NASA Visitor Badging (Building 26) between the hours of 6am - 5pm to receive their badge. You must bring your passport and visa (or valid DS-2019). The full list of acceptable I-9 documentation can be found at https://www.nasa.gov/pdf/474227main_acceptable_IDs.pdf. ESPO will provide an escort at all times while FNs need access to the Ames campus.

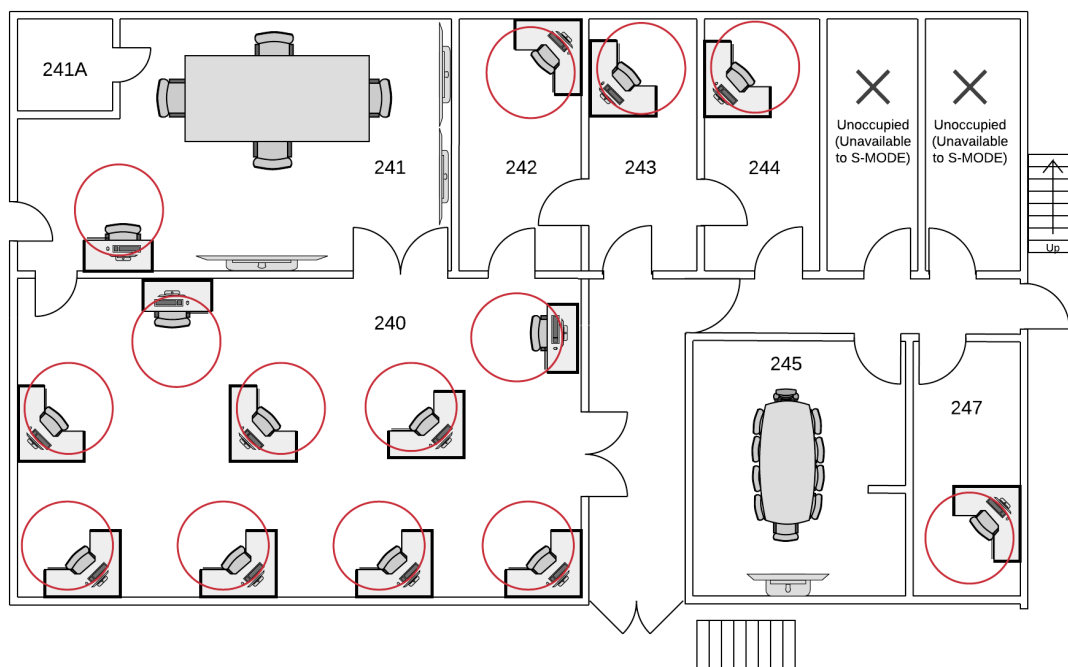
OPERATIONS CENTER

BUILDING N248

The operations center for AFRC B200 and LaRC G-III flight operations will be located in Ames Building N248, which is located inside [Ames Research Center on Hall Road](#). Parking for N248 is available in the large parking lot in front of the building.



The mockup below shows the floorplan and configuration for the second floor office spaces in ARC Building N248 that will be utilized for S-MODE. The circles indicate individual work spaces with the required six foot radius of separation. Only personnel essential to flight operations should be on-site at Ames. Use of the facilities should be on an as-needed basis and minimized as much as possible.



ARC Building N248 second floor office space for S-MODE mission operations. The X's indicate rooms that are unoccupied and unavailable for use by S-MODE participants.

N248 Second Floor Work Space Occupancy

Room	Function
240	DopplerScatt, MOSES, PRISM Office
241	B200 Conference Room
242	B200 Pilots Office
243	ESPO Office
244	LaRC Pilots Office
245	G-III Conference Room
247	Additional Office

The balance of the essential personnel, project management, flight crew, and maintenance crew can have their own work stations on the hangar floor where people can easily spread out. Due to the moderate weather that is typical at Moffett Field, hangar doors can remain open ensuring fresh air circulation at all times.

NETWORK

Wireless internet will be available in all offices and on the hangar floor. NASA AFRC and LaRC visitors can seamlessly connect to the NASA wireless network as they do at their home center. In addition, hard wired internet connections will be available for participants from AFRC and LaRC. JPL employees and non-NASA participants will be given login credentials to use the NASA Connect wireless network.

OPERATIONS

MISSION SCHEDULE

The high level S-MODE mission schedule can be found at <https://espo.nasa.gov/s-mode/calendar>.

The table below shows, in general, how a typical day may go during S-MODE operations. This is subject to change based on a number of factors including weather and PI discretion.

Time	Activity/Participants	Inputs	Outcome
2:00pm-3:00pm	Science team telecon to review next day plans	Weather and ocean forecasts, data summary for previous day, ship and plan reports for current day	Determines plan for the next day, and general goals for the next 3-5 days
5:00pm-5:30pm	Preliminary go/no-go for planes. PI, Deputy PIs, instruments leads, pilots	Decisions from science team meeting	Preliminary go/no-go decision. Waypoints and flight times for next day's flights
5:30pm-6:30pm	Flight plan by pilots	Outputs from 5pm go/no-go meeting	Notional flight plans for next day

7:00pm-7:00am	Airplane near real-time data processing by instrument teams	Data from day's flights	Visualization images for previous day data collection
6:30am-7:00am	Finalize morning flight go/no-go decision. PI, deputy PIs, instrument leads, instrument operators	Updated weather forecasts, ship situational report	Pilots contacted for go/no-go decision
7:00am-1:00pm	Flights for selected instruments. Pilots, instrument operators, ESPO, Code JO mission support personnel	Go/no-go morning decision	Morning flights for selected instruments
8:00am-5:00pm	Analysis of previous day data, ship data, satellite data.	NRT data, airborne data from previous day, satellite data, weather and ocean models	Summary situational reports at noon and 5pm
11:00-11:30am	Finalize afternoon flight go/no-go decision. PI, deputy PIs, instrument leads, instrument operators	Updated weather forecasts, ship situational report	Pilots contacted for go decision
1:00pm-7:00pm	Flights for selected instruments. Pilots, instrument operators, ESPO, Code JO mission support personnel	Go/no-go morning decision	Afternoon flights for selected instruments

COMMUNICATIONS

A daily plan of the day (POD) and any other pertinent information regarding the S-MODE field campaign will be shared on multiple platforms, including email, Slack, the [ESPO S-MODE website](#), and the [UW S-MODE Google Drive](#).

If you are having trouble accessing any of these platforms, please contact erin.czech@nasa.gov.

LODGING

LARKSPUR LANDING

ESPO has set up a room block at **Larkspur Landing Inn** in Sunnyvale, CA. Reservations should be made no later than Sunday, October 3. Reservations can be made by either 1) calling 408-733-1212 and requesting the group rate for "S-MODE Mission 2021" or 2) online at <https://gc.synxis.com/rez.aspx?Hotel=11160&Chain=5175&group=040320SMO>.

Please be prepared to provide a credit card number for the room reservation. The hotel has a 24-hour cancellation policy for individual reservations. If you do not make your reservation on or before **October 3, 2021**, rooms will only be offered at the standard rate being offered by the hotel at the time of booking.

If you have any lodging questions please email: judy.alfter@nasa.gov.

Larkspur Landing Inn

Address: [748 N Mathilda Ave, Sunnyvale, CA 94085](#)

When: October 17, 2021 - November 9, 2021

Last Day to Book: Sunday, October 3, 2021

Studio Room Rate: \$149.00 per night

Front Desk: 408-733-1212

[Click Here to Make a Reservation](#)



SHIPPING TO NASA AMES RESEARCH CENTER

SHIPPING ADDRESS

NASA Ames Research Center

BLDG N255

Moffett Field, CA 94035

Attn: Sommer Nicholas (650) 450-7645

Please pack any fragile or sensitive equipment in hard shell cases with plenty of cushioning and avoid shipping loose items whenever possible.

Before you ship your items to ARC, please email Sommer Nicholas at sommer.nicholas@nasa.gov with tracking information.

AROUND TOWN

RESTAURANTS

LINKS: [Mountain View Voice - Suggested Restaurants List](#)

[UberEats - Serving Ames Research Center](#)

[Mountain View Downtown Dining Guide](#)

GROCERY STORES

[SAFEWAY](#)

570 N. Shoreline Blvd.
Mountain View, CA 94043
Store Phone: (650) 961-4868
Pharmacy Phone: (650) 961-4851
[Directions to SAFEWAY](#)

[AVA'S DOWNTOWN MARKET & DELI](#)

340 Castro Street
Mountain View, CA 94041
Store Phone: (650) 961-5652
[Directions to Ava's](#)

[WHOLE FOODS MARKET in LOS ALTOS, CA](#)

4800 El Camino Real
Los Altos, CA 94022
Store Phone: (650) 559-0300
[Directions to Whole Foods in Los Altos, CA](#)

PHARMACIES

[SAFEWAY](#)

570 N. Shoreline Blvd.
Mountain View, CA 94043
Store Phone: (650) 961-4868
Pharmacy Phone: (650) 961-4851
[Directions to SAFEWAY](#)

[CVS](#)

850 California St.
Mountain View, CA 94041
Phone: (650) 691-4004
[Directions to CVS](#)

COVID-19 PROTOCOLS AND MITIGATION

The following highlights are the key measures lined out in the S-MODE Airborne Operations Health Safety Plan. The full details of the plan can be found at [S-MODE 2021 AIRBORNE OPS Health Safety Plan.pdf](#).

- Daily health monitoring
- Social distancing and Personal Protective Equipment (PPE)
- Cleaning/hygiene protocols
- Training/Required Briefings
 - Read [S-MODE 2021 AIRBORNE OPS Health Safety Plan.pdf](#)
 - Each mission participant deploying to ARC must complete the “COVID-19 and Returning to On-site Work” SATERN training module prior to accessing ARC (COURSE # ARC-003-08). SATERN training certificates will be collected and sent to ARC Code Q (Safety). For participants who cannot get access to SATERN, Code Q will facilitate a special training session.
 - Each mission participant deploying to ARC must attend a mandatory all-hands safety briefing, which will be conducted in the beginning of October that will cover all aspects of this plan. This briefing will be conducted virtually.
- COVID-19 Emergency Response Plan
 - If a participant begins to experience COVID-19 symptoms or if they have been around someone who has COVID-19, then the participant shall take the following steps:
 - Do not report to work and self-isolate.
 - If at work, immediately leave the work site and go back to their hotel to self-isolate.
 - Put on a mask and avoid contact with others until obtaining further direction from a healthcare provider
 - Seek medical guidance from their personal physician. If COVID-19 testing is recommended, see details at [S-MODE 2021 AIRBORNE OPS Health Safety Plan.pdf](#)
 - Notify their supervisor and the S-MODE project manager as soon as possible by phone or email, even if on the weekend.

For the most up-to-date COVID-19 guidelines from the County of Santa Clara, please visit:

<https://www.sccgov.org/sites/covid19/Pages/public-health-orders.aspx>

MEDICAL AND EMERGENCY INFORMATION

MOUNTAIN VIEW, CA HOSPITALS AND URGENT CARE CENTERS

[EL CAMINO HOSPITAL MOUNTAIN VIEW](#)

2500 Grant Rd.
Mountain View, CA 94040
(650) 940-7000

[Directions from AMES RESEARCH CENTER](#)

[MOUNTAIN VIEW CENTER](#)

701 East El Camino Real
Mountain View, CA, 94040

(650) 934-7000

[Directions from AMES RESEARCH CENTER](#)

URGENT CARE CENTERS

[EL CAMINO URGENT CARE](#)

1150 W. El Camino Real
Mountain View, CA 94040
(650) 695-5008

[Directions from AMES RESEARCH CENTER](#)

[SUTTER URGENT CARE - MOUNTAIN VIEW, CA](#)

Located in: Sutter Health Palo Alto Medical Foundation - Mountain View Center

Address: 701 E El Camino Real, Mountain View, CA 94040

Phone: (650) 934-7800

[Directions from AMES RESEARCH CENTER](#)

GENERAL SAFETY

LAB, HANGAR, AND RAMP SAFETY

- Closed-toe shoes are required in the hangar and on the ramp. No high heels, sandals or open-toes or 'webbed' shoes are allowed.
- Long pants are required when aboard the aircraft.
- No smoking is allowed in any building. Smoking is only allowed in outside areas where designated. Be aware that there are fuels and other hazards nearby.
- Boxes of hearing protection plugs will be available on the hangar floor in Building N248.
- If you bring hazardous materials into the hangar, please provide ESPO a copy of the SDS in advance.
- Use proper personal protective equipment (PPE) when you are handling hazardous products/materials or performing tasks that would require additional protection.
- Be aware of a loud bell that rings while hangar doors are being opened or closed.
- Always make sure someone in your group knows your whereabouts in case of an emergency.
- 24/7 access – the last one out must turn off the lights. See a member of the ESPO team if you are unsure how to do this.
- Safety vests will be provided if you do not have one. Wear it at all times while on the flight line.

S-MODE POINTS OF CONTACT

Aircraft Project Management

John T. McGrath, B-200 (N801NA) Airborne Science Manager
Organization: NASA Armstrong (Dryden) Flight Research Center
Cell: (661) 802-3566
Office: (661) 276-2588
Email: john.t.mcgrath@nasa.gov

Luke Delaney, G-III (N520NA) Project Manager
Organization: NASA Langley Research Center
Cell: (757) 708-2478
Office: (757) 864-1225
Email: luke.d.delaney@nasa.gov

ESPO Project Management

Erin Czech, S-MODE Project Manager
Cell: (650) 499-6406
Office: (650) 604-1655
Email: erin.czech@nasa.gov

Sommer Nicholas, Deputy Project Manager
Cell: (650) 450-7645
Office: (650) 604-5966
Email: sommer.nicholas@nasa.gov