



School of Earth and Environmental sciences, SNU

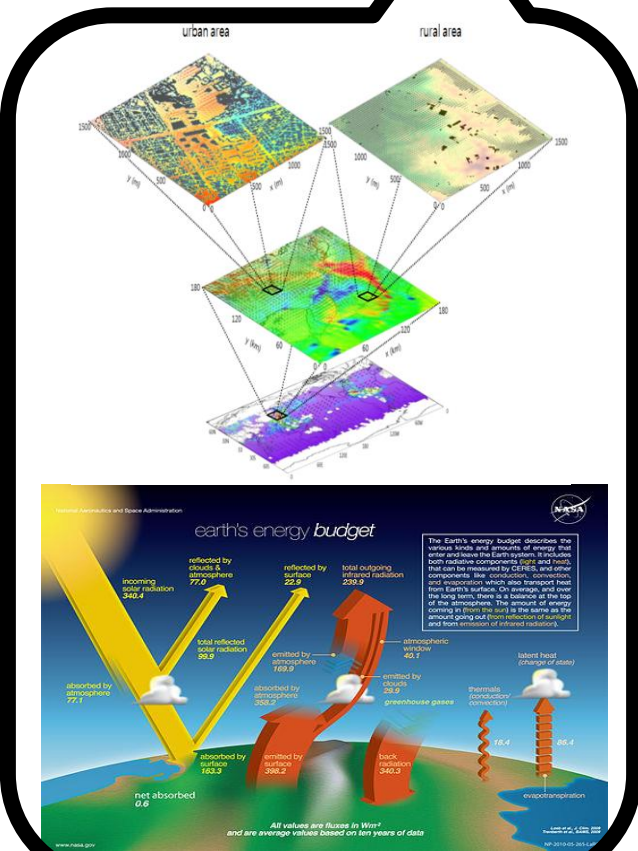
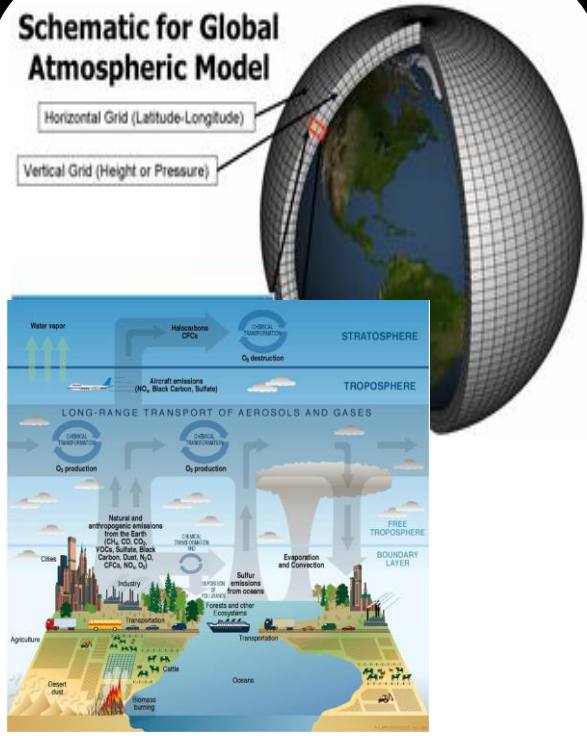
Atmospheric Chemistry Modeling Group **ACMG**

(Prof. ROKJIN PARK)

Human effects on ozone and aerosols

Climate effect of SLCPs using a coupled chemistry-climate model

HCHO and CHOCHO measurements using GEMS



Geostationary Environment Monitoring Spectrometer

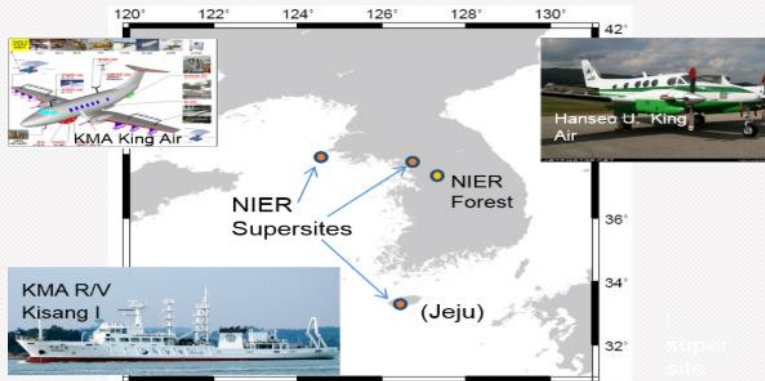
지구환경위성 연구단

OMI HCHO 2005m06 (≈40% Cloud Cover)

GEOCAPE Sentinel-4 GEMS

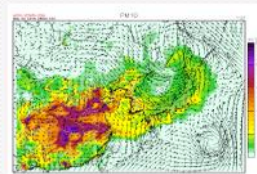


Rokjin Park Seoul National University (SNU)



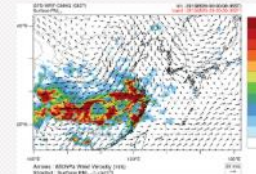
- The proposed platforms in the MAPS field campaign
- Proposed flight plans for two units of King-Air and DC-3
- Global air quality satellite constellation
- Observing system framework of KORUS-AQ
- Special use airspace within the South Korean FIR

AJOU



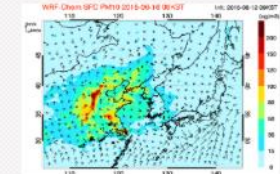
PM10 forecast by AJOU (Soontae Kim)

GIST



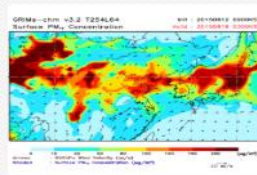
PM10 forecast by GIST (Chul Han Song)

PNU



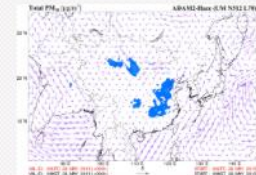
PM10 forecast by PNU (Cheol-Hee Kim)

SNU ACMG



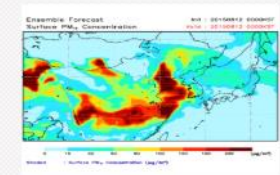
PM10 forecast by SNU ACMG (Rokjin J. Park)

KMA



PM10 forecast by KMA

ENSEMBLE



ENSEMBLE forecast

UPLOADED FILES

- [RF02_First look Aerosol Chemical Composition.pdf](#)
- [ResearchFlight02_060215.pdf](#)
- [ResearchFlight_RF03_060615.pdf](#)
- [ResearchFlight_RF03_04_060715.pdf](#)