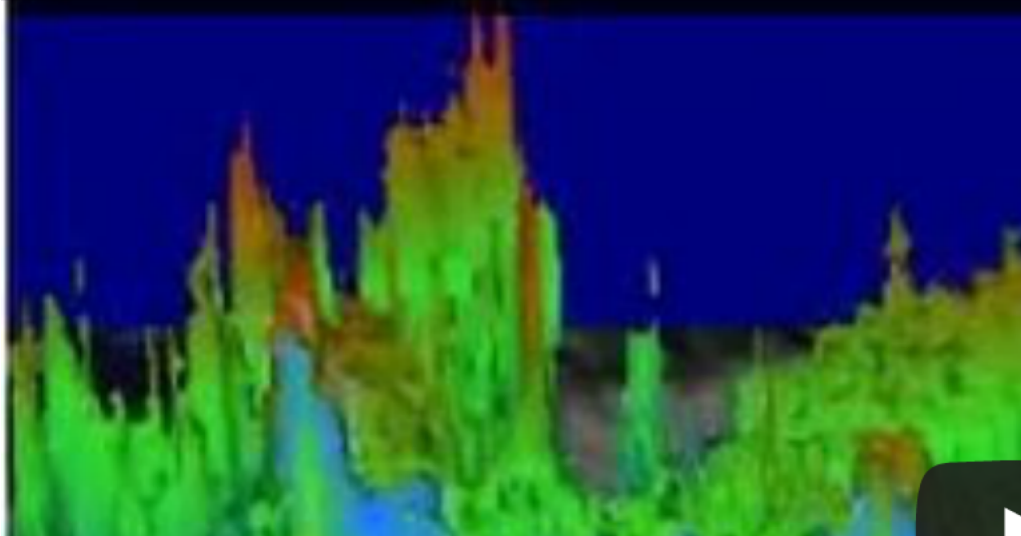




# NASA begins Hurricane Mission with Global Hawk Flight to Cristobal

POSTED 6:47 AM, AUGUST 28, 2014, BY CARRIE ROSE, UPDATED AT 06:49AM, AUGUST 28, 2014

NASA's TRMM Satellite Sees Powerful Towering St...



WALLOPS ISLAND, Va. – The first of two unmanned Global Hawk aircraft landed at NASA's Wallops Flight Facility in Wallops Island, Virginia, on Aug. 27 after surveying Hurricane Cristobal for the first science flight of NASA's latest hurricane airborne mission.

NASA's airborne Hurricane and Severe Storm Sentinel, or HS3, mission returns to NASA Wallops for the third year to investigate the processes that underlie hurricane formation and intensity change in the Atlantic Ocean basin. HS3 is a collaborative effort that brings together several NASA centers with federal and university partners.

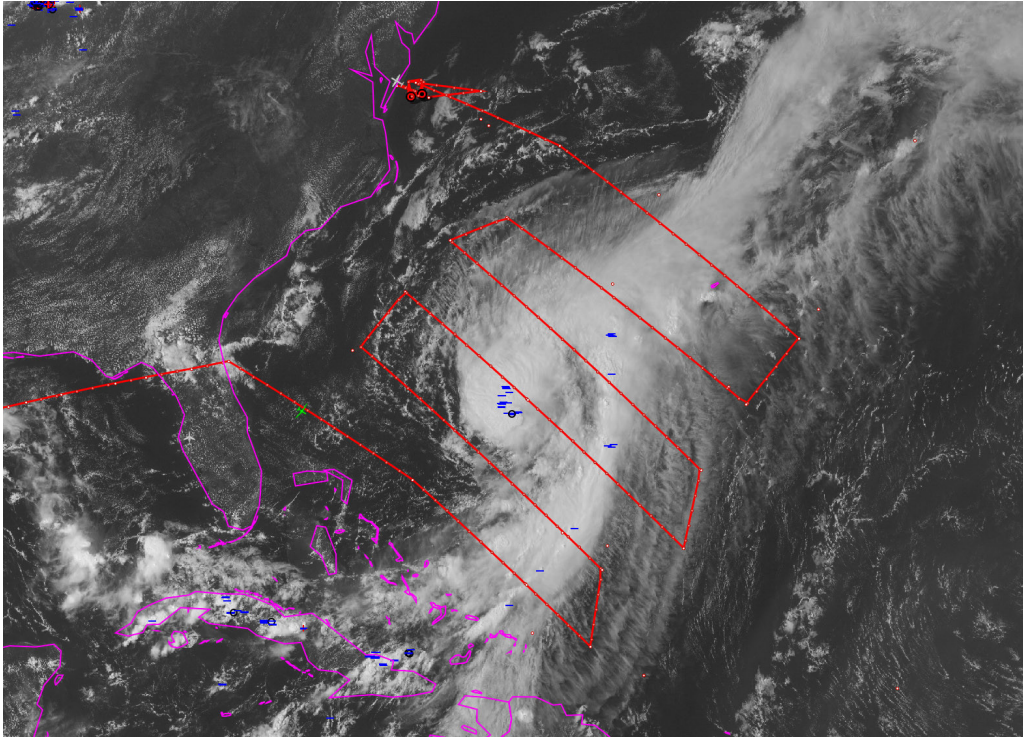
The two unmanned Global Hawks participating in HS3 are based at NASA's Armstrong Flight Research Center at Edwards Air Base, California, but will be temporarily housed at NASA Wallops for the duration of the HS3 mission which runs through Sept. 29. That window for the mission coincides with the peak of the Atlantic hurricane season that runs from June 1 to Nov. 30.



*The NASA Global Hawk 872 lands at 7:43 a.m. EDT, August 27, at the Wallops Flight Facility in Virginia following a 22-hour transit flight from its home base at the Armstrong Flight Research Center in California. Image Credit: NASA/ Brea Reeves*

NASA Global Hawk 872 departed NASA Armstrong on the morning of Aug. 26 and arrived at NASA Wallops at 7:43 a.m. EDT on Aug. 27. Global Hawk number 871 is scheduled to fly to Wallops within a week.

Tropical Storm Cristobal became a hurricane late on August 25 as it was moving through the Bahamas. During the Global Hawk's 22 hour mission it flew a "lawnmower" or back and forth pattern over Hurricane Cristobal while gathering data using dropsondes and two other instruments. There were 83 dropsondes loaded in the aircraft, with two of them were dropped over the Gulf of Mexico and the other 81 dropsondes dropped over Cristobal. A dropsonde is a device that measures winds, temperature, pressure and humidity as it falls from the aircraft to the surface.



*The Global Hawk flew this lawnmower flight pattern over Hurricane Cristobal on August 26, 2014. Image Credit: NASA*

“The instruments are tested and then integrated onto each Global Hawk at Armstrong,” said Marilyn Vasques, HS3 Project Manager of NASA Ames. Before the cross-country flights, the ground operations center at Wallops tested the various instruments aboard both aircraft while they were still at Armstrong. “After integration and outdoor tests we conduct a Combined Systems Test on the ground as well as a test flight near Armstrong before the instruments and aircraft are ready to transit” explained Vasques. Checking the performance of the instruments over that long distance while they were at a NASA center was critical to ensure they would operate correctly while in-flight over Atlantic hurricanes.

Now that the first Global Hawk is at Wallops, the mission will investigate any significant disturbances that might develop in the western Atlantic. The HS3 mission will investigate disturbances before they become depressions to examine how a storm forms. The mission is also looking for conditions that favor (or promote) rapid intensification of tropical cyclones.

“Twice a day we hold weather briefings looking for storms or disturbances that could become storms,” said Scott Braun, HS3 Principal Investigator from NASA’s Goddard Space Flight Center in Greenbelt, Maryland, working at Wallops during the mission. “We evaluate the targets in terms of our science objectives and determine which one best addresses those objectives. We factor in stage of the life cycle of the storm, likelihood of formation or intensification, interaction with the Saharan Air Layer, among other things.”

During the mission period, the Global Hawks will be operated from Wallops where they will depart and fly over tropical cyclones in the Atlantic, analyzing the storms with six scientific instruments. The East Coast NASA location makes accessing Atlantic tropical cyclones easier and allows for more science data collection than if they were to fly from the West Coast. Each aircraft has an 11,000-nautical-mile range and can fly for up to 26 hours.

One Global Hawk will carry three instruments to examine the environment around the storms, including the Scanning High-resolution Interferometer Sounder (S-HIS), the Advanced Vertical Atmospheric Profiling System (AVAPS), also known as dropsondes, and the Cloud Physics Lidar (CPL). The second Global Hawk will focus on the inner region of the storms to measure wind and precipitation, surface winds, and atmospheric temperature and humidity. It will carry the High-Altitude Imaging Wind and Rain Airborne Profiler (HIWRAP) conically scanning Doppler radar, the Hurricane Imaging Radiometer (HIRAD), and the High-Altitude Monolithic Microwave Integrated Circuit Sounding Radiometer (HAMSR) microwave sounder. The HS3 mission is funded by NASA Headquarters and overseen by NASA's Earth System Science Pathfinder Program at NASA's Langley Research Center in Hampton, Virginia. It is one of five large airborne campaigns operating under the Earth Venture program.

The HS3 mission also involves collaborations with partners including the National Centers for Environmental Prediction, Naval Postgraduate School, Naval Research Laboratory, NOAA's Unmanned Aircraft System Program, Hurricane Research Division and Earth System Research Laboratory, Northrop Grumman Space Technology, National Center for Atmospheric Research, State University of New York at Albany, University of Maryland – Baltimore County, University of Wisconsin, and University of Utah. The HS3 mission is managed by the Earth Science Project Office at NASA Ames Research Center, Moffett Field, California.

For more information about NASA's HS3 mission, visit: <http://www.nasa.gov/hs3>

For more information about an HS3 sonde, visit:  
<http://www.nasa.gov/content/goddard/what-the-heck-is-a-dropsonde/#>

### **Rob Gutro**

NASA's Goddard Space Flight Center