

Deployment Orientation Guide

CAMP²EX @ Clark



Welcome to CAMP²EX

This document was created by the Earth Science Project Office to get you started and answer most of your questions ahead of your arrival to Clark, Philippines.

August - September 2019

Table of Contents

Mandatory Foreign Travel Security Training	2
High Threat Security Overseas Seminar (HTSOS)	3
Foreign Affairs Counter Threat (FACT):	3
Clark Freeport, Philippines	4
Geographic Location	4
Per Diem Information (as of August 1, 2019)	4
Climate	5
Language	6
Culture	6
Money	6
Local Electricity	7
Local Time	7
Safety	7
Crime	8
Before You Travel	9
Communication Preparation and Group Texting	9
Local ESPO Cell Phone Lines	9
Mobile Phone Settings When Abroad	10
Obtaining a Local Data Plan	11
Mailing Lists	12
Airport Attire	12
Health	13
Over the Counter Medications	13
Health Insurance	13
Vaccinations	14
Dengue Fever and Preventing Mosquito Bites	14
Your Arrival to the Philippines	17
Cash and ATMs	18
Traffic	18

Arriving at Manila International Airport (MNL)	19
Traveling by Taxi from MNL to Clark	19
Taking the CAMP2Ex Shuttle from MNL to Clark	20
Arriving at Clark International Airport (CRK)	20
Ride Sharing App: Grab	20
Lodging	21
Early departure Fee	21
Car Rentals	22
CAMP2Ex Operations at Clark	22
CAMP2Ex Mission Check-in	22
Asian Aerospace Hangars	22
CAMP2Ex Workspace Areas	23
General Orientation	27
Local Area	28
Shopping Malls	28
Grocery Markets	28
Local Markets	28
Laundry Services	29
Climate Information	31
Dialing Numbers to/from/in the Philippines	32
Calling the Philippines from the United States	32
How to Dial a Philippines Cellular	32
Calling the US from the Philippines	32
Shipping to/from the US (and other countries)	32

This orientation package is to help you become familiar with our area of operations in the Philippines and to answer some of the most common questions you may have prior to your arrival. The best and most complete source of information about the Philippines is provided by the State Department. Please visit:

<https://travel.state.gov/content/travel/en/international-travel/International-Travel-Country-Information-Pages/Philippines.html>

Mandatory Foreign Travel Security Training

All NASA personnel (including contractors) travelling to any international country on official business are required to complete the **High Threat Security Overseas Seminar** (HTSOS) course. NASA personnel travelling in excess of 45 days **cumulatively** to **any** international



country within a calendar year will be required to complete the **Foreign Affairs Counter Threat** (FACT) course.

High Threat Security Overseas Seminar (HTSOS)

All NASA personnel (including contractors) may complete the online HTSOS course via SATERN ([link](#)) at no cost. Once the learner successfully completes the course, they must download a copy of the training completion certificate and submit it to the International Services Office to move forward with the country clearance process.

Foreign Affairs Counter Threat (FACT):

FY19 tuition costs for the FACT course is \$2,036.00.

This course is a 5-day in-person course located in Summit Point, West Virginia. This training facility is the only available location so plan accordingly, as additional travel to the training facility may be required. The FACT course is offered in West Virginia on a weekly basis, excluding weeks with federal holiday(s). Please visit the Foreign Service Institute FACT Website to view current scheduled offerings ([link](#)).

To begin the request process, NASA personnel (as appropriate for CS of other agencies) will need to submit TWO external training requests (SF-182) to their Training Office for review and approval:

SATERN SF-182 ([link](#)) – required by the NASA Shared Services Center (NSSC)

OPM SF-182 ([link](#)) – required by the U.S. Department of State/Foreign Service Institute (FSI)

It is highly recommended that you submit both documents to your Training Office at least 6 to 8 weeks in advance of your requested training date. Once the learner receives the "Final Approval" notification from the NSSC, this notification indicates that their registration documents have been forwarded to the Foreign Service Institute (FSI) for registration and payment. **The registration process is slightly different for contractors: follow the instructions on the FSI website given above.

The learner will receive a direct email from FSI about their specific course details. Travel will likely be required, so civil servants will need to work directly with their Travel Office to plan for travel to the training location.



Clark Freeport, Philippines

Geographic Location

Clark Freeport is located about 40 miles Northwest of Manila (1.5 hours driving) and is part of the former US Air Force facility known as Clark Air Base (Fig. 1). Clark was established by the US Army in 1903 and played a vital role during World War II as a US stronghold in the Eastern Theater. In 1991 the US Army transferred ownership back to the Philippine government and is now called the Clark Freeport Zone (CFZ). The closest community is Angeles City, which is only 3 miles away.

Per Diem Information (as of August 1, 2019)

As of April 1st, 2019, the per diem rates are as follows:

Manila: maximum lodging rate: \$205USD, Meals and Incidentals: \$140USD

Clark): maximum lodging rate: \$112USD, Meals and Incidentals: \$99USD

These rates may vary from month to month. For the most up to date information, visit:

https://aoprals.state.gov/web920/per_diem_action.asp?MenuHide=1&CountryCode=1139



Fig. 1: Clark is 72 miles / 115Km NW of Manila

Climate

The Philippines is known for three seasons: *tag-init* or *tag-araw*, the hot dry season in summer from March to May; *tag-ulan*, the rainy season from June to November; and *tag-lamig*, the cool dry season from December to February. Being part of the typhoon belt, about eight typhoons make landfall each year. The Sierra Madre Mountains provide a natural shelter for Clark Air Base, so the typhoons are rarely strong in this area due to its inland location.

During the rainy months - when CAMP2Ex will take place - there are many dark and overcast days with rainstorms in the afternoon and evenings. In August, the average temperatures range from 75°F-80°F with 83% humidity and an average rainfall of about 16.5 inches. September is also hot and humid with temperatures ranging from 75°F-88°F with an average humidity of ~84%. Important to note is that, for example, 86°F will actually feel like 101°F at 85% humidity.



Language

Filipino and English are the official languages of the country. Filipino is a standardized version of Tagalog which is spoken mainly in urban regions. There are over 186 individual languages in the Philippines, including Tagalog, and most towns have a local language. Please do not assume that every native tongue that you come across is Tagalog.

Culture

Filipinos are very respectful and hospitable to visitors. They value spending time with family and friends and being part of a community. Enjoying food and celebrating milestones are also important. You will find a mixture of Eastern and Western cultures as a result of pre-colonial and colonial influences coming together. Spain has greatly influenced both the architecture and language of the Philippines. Filipino cuisine consists of a mixture of Spanish, Chinese, American and Asian flavors. They tend to be rice dishes with either chicken or fish as the main protein. The flavors are robust but not spicy.

Money

Local currency is the Philippine peso or *piso* (PHP), and its symbol is ₱. It is subdivided into 100 cents (centavos or *sentimos* in Filipino). There are six common banknotes all differentiated by bright colors in circulation: 20, 50, 100, 200, 500, and 1,000 peso bills.

It is common to bargain in outdoor markets for handcrafted goods. However, the price for food is usually set. You can also bargain while hiring a taxi (**note: avoid jeepneys and buses as forms of transportation**).

Cash is important to keep on hand so make sure to have coins and ₱20, ₱50, ₱100 notes. There is a foreign exchange window available at both the Clark and Manila airports as well as an ATM (see the Cash and ATM section on page 14). There is also an ATM available at the Marriott Hotel in the lobby.

The current exchange rate is about \$1 to ₱50.

A 10% tip is often added to bills in cities at tourist spots, otherwise leave 5-10%. For taxis consider rounding up fares and tipping ₱50 - ₱70. In hotels it is not expected to tip but you can tip porters ₱50. If taking local tours make sure to tip your guides.

Local Electricity

Electrical outlets in Clark are 220V (standard). Some are two-prong plugs, some three-prong, but **ALL plugs in the hangar and the Marriott hotel are 220V** unless indicated. DO NOT USE 120V Power Strips (even though the plug looks the same). ESPO will provide power strips for every workstation.



Fig. 2: Wall sockets in the Philippines are 220V

Local Time

The local time in Clark and the Philippines is UTC + 8 hours. US West Coast is UTC - 7 hours, which is 15 hours ahead of US West Coast time in PDT.

Safety

There is some level of crime in Manila and Angeles City - more than in Clark - that requires you to remain vigilant, alert, on the lookout for scams, and other unsafe situations.

- Use the buddy system when traveling abroad or visiting unfamiliar areas
- Maintain a low profile by not wearing expensive items or calling attention to yourself
- Carry only what you need
- Keep your valuables located on the front of you at all times so you can keep better track. Consider using a money belt and not bringing a purse
- Avoid rallies and protests
- Avoid unsafe methods of transportation such as jeepneys and buses
- Brief someone on your team about your plans
- Share your itinerary with ESPO

- US citizens should enroll on the State Department's STEP program to receive alerts and other notifications while in-country - <https://step.state.gov/step/>
- For US citizens, in case of emergency or for assistance with any serious incidents, contact the US Embassy Regional Safety Officer (RSO) at +63 02 301 2000 (available 24/7).
- Most of the information provided here applies to everyone, however, non-US citizens should visit their respective embassy/consulate websites for specific instructions.
- **ALWAYS inform ESPO of any incidents or emergencies but contact local authorities first.**

Crime

The following is an excerpt from the State Department website:

Crime: Confidence games (con games), pick-pocketing, Internet scams, and credit/ATM card fraud are common. Be wary of unknown individuals who attempt to befriend you, especially just after your arrival in the country. Do not accept food, drinks, or rides in private vehicles from strangers, even if they appear to be legitimate. Solo travelers have been drugged and robbed by strangers after accepting an invitation to visit a tourist destination.

Kidnappings, physical assaults, murder-for-hire, and other violent crimes occur in the Philippines. Philippine government law enforcement agencies are engaged in a nationwide counter-narcotics campaign that has resulted in a sharp increase in violence between police and individuals suspected of involvement in the drug trade. As part of this campaign, law enforcement is engaged in aggressive search and buy-bust operations that could affect foreigners.

Taxis or ride-sharing applications are the recommended form of public transportation. However, taxi drivers and/or individuals using stolen taxi cabs have committed robberies. Ask the hotel, restaurant, and/or business establishment to call a reliable taxi cab service for you.

- Do not enter a taxi if it has already accepted another passenger.
- Request that the taxi driver use the meter to record your fare.
- Wait for another cab if the driver is unwilling to comply with these requests.
- Make a mental note of the license plate number of the cab, or text it to someone, should there be a problem.
- When driving in the city, make certain that vehicle doors are locked and windows are rolled up.

Travelers have been stopped and robbed shortly after leaving Manila Ninoy Aquino International Airport in a taxi or private vehicle.

One common form of **credit/ATM card fraud** involves an illicit electronic device attached to ATM card readers that retrieves and records information, including the PIN, from the card's magnetic strip. Refer to the Overseas Security Advisory Council for more [information](#).

See the [Department of State](#) and the [FBI](#) pages for information on scams.

Victims of Crime: U.S. citizen victims of sexual assault should first contact the U.S. Embassy. Report crimes to the local police at the 911 hotline and contact the U.S. Embassy at +63 02 301 2000. Remember that local authorities are responsible for investigating and prosecuting the crime. See the US State Department's web page on [help for U.S. victims of crime overseas](#).

Before You Travel

Communication Preparation and Group Texting

Communication during the project will be distributed via two main methods: Email, and WhatsApp Groups. Most fast and dynamic conversations should take place via the WhatsApp groups ("CAMP2Ex 2019" Group), and email would be the second best option. It is your responsibility to stay informed and aware of information pertaining to the mission. If you have any questions always call/text/email ESPO. For non-mission related activities via WhatsApp subscribe to the "CAMP2Ex Fun and Media" group.

Local ESPO Cell Phone Lines

While most local people and businesses use texting apps such as WhatsApp and Viber, some do not. We have two local cell phones that you can use:

ESPO Cell phone at Hangar (located in the ESPO area): **+63 956 847-2782**

ESPO Cell phone (with any of the ESPO personnel at Clark): **+63 956 847-2783**

Mobile Phone Settings When Abroad

Check your cellular service provider's international plan for the Philippines and any transit stops that you will be at for a while. Familiarize yourself with data settings on your phone before you land. Check specific instructions for your carrier and phone model as these instructions may not apply.

Tips for Mobile phone settings when abroad so you can avoid incurring roaming fees:

- COUNTRY CODE Put +1 in front of all numbers in your phone directory that North America numbers. The calls will go through as normal when you are in the US and when you're abroad you won't accidentally call a local phone.
- ENABLE WI-FI CALLING

iOS: Settings > Phone > Wi-Fi Calling > On > Enable

Android: Check on the specific instructions for your model phone

- TURN DATA ROAMING OFF

iPhone: Go to Settings → Cellular → Cellular Data Options → slide Data Roaming off.

Android: Go to Settings → Wireless Controls → Mobile Network Settings → slide Data Roaming off.

You can turn off the Data Roaming slider. This will help you avoid charges by restricting your access to the cellular data when you're abroad. If you try to use an app that requires Internet access while data roaming is turned off, it will prompt you to manually switch data roaming back on unless you're connected to WiFi.

- DISABLE PUSH NOTIFICATIONS AND AUTO-SYNCING

iOS: Settings > Mail, Contacts, Calendars > Fetch New Data to turn off Push Notifications.

iOS: Settings > Notifications > Click on each app and turn the Notifications Center to OFF

- TURN OFF LOCATION SERVICES

iPhone: Go to Settings → Privacy → Location Services → toggle Location Services On / Off.

Android: Go to Settings → Location → toggle Location Services On / Off.

- RESET YOUR DATA TRACKER SO YOU'LL KNOW HOW MUCH YOU'VE USED

iOS: Settings > General > Usage or Cellular Usage

Obtaining a Local Data Plan

Before traveling to the Philippines, you will want to make sure that your phone is compatible with the carriers abroad. First, contact your provider and ask 1) if your phone is unlocked and compatible with a GSM network and 2) able to use SIM cards. The Philippines function on a GSM network (AT&T and T-Mobile), not CDMA (Verizon and Sprint).

IF YOU WANT and AT YOUR OWN EXPENSE you could buy a local data plan at any mall or airport. As an example, we got the following phone/plan for the ESPO lines (for 1 month):

₱350: Global to Global Unlimited text/call ("Global" is the name of one of the main network providers in the area")

₱4500: Call to any number (not in the Global Network) (8PHP/minute)

₱1050: SIM card with 10Gb of data

Total: ₱5900

Local smart phones start from about 3999PHP

Other offers listed below will vary depending on current offers and promotions:

- Global "All-in promo"
 - ₱700 (about \$13USD) and available at both airports, Clark and Manila (you might need your passport to register your SIM card)
 - 15 days
 - 8 GB data / unlimited calling/texting
- Smart LTE SIM + GIGASURF (Data only plan)
 - ₱499 - ₱899 (between \$10-15USD) and available at most airports (you might need your passport to register your SIM card)
 - 30 days
 - 8GB + 1GB/day of Video Every Day for YouTube, iFlix, iWant TV, NBA League Pass, Signal TV
- Smart LTE SIM + GIGA + 449 (Data/Text/Talk)

- ₱499 (\$10USD) and available at most airports (you might need your passport to register your SIM card)
- 30 days
- 4GB + 1GB EVERY DAY for YouTube, iflix, NBA, Cignal & iWant + UNLITEXT to ALL + UNLICALL to Smart/TNT/Sun for 30 days.

Please note that high speed internet will be available at the hotel and at the hangar. Also, free Wi-Fi access is available at most cafes and restaurants.

Mailing Lists

There is one plenary email list (with distribution to all CAMP2Ex participants, including those not participating in the deployment) and five focus areas distribution lists. To be added to any of these specific groups please email ESPO.

CAMP2Ex ALL: camp2ex@espo.nasa.gov

CAMP2Ex Aerosol and Composition Focus Area: camp2ex_aerosol@espo.nasa.gov

CAMP2Ex Shore & Sea: camp2ex_shore_n_sea@espo.nasa.gov

CAMP2Ex Radiation Focus Area: camp2ex_rad@espo.nasa.gov

CAMP2Ex Models and METOC Focus Area: camp2ex_met@espo.nasa.gov

CAMP2Ex Cloud and Precipitation Focus Area: camp2ex_cloud@espo.nasa.gov

CAMP2Ex Media Outreach: camp2ex-media-outreach@espo.nasa.gov

Airport Attire

With hot and humid conditions, it is important to wear cool clothing but to also always observe appropriate laboratory attire. **Shorts are not allowed at the airport.** Also remember there are **no open toe shoes** in the office, hangar or aircraft as it is a matter of safety from spills and falls. Shoes with openings are not considered closed-toed. GoreTex shoes that are breathable and waterproof are also helpful to have while in the field. **Safety vests** will be provided if you do not have one. Wear it at all times.

Loose fitting clothing made from moisture wicking fabric such as nylon and polyester are recommended. In humid climates it's better to wear clothing that does not cling to skin. Consider purchasing lightweight convertible hiking pants that offer moisture wicking capabilities, air ventilation, and the ability to zip off into shorts when not at the airport. Raincoats that are lightweight and breathable are also recommended. To fight off

mosquitoes we also suggest clothing that has been pre-treated with insect repellent called permethrin. You can purchase a permethrin treatment wash and pre-treat your existing clothing and gear at home. Permethrin should keep your clothing mosquito repellent after multiple washings.

Health

The hot and humid climate of Clark makes dehydration a threat. Ensure proper hydration and avoid overexposure to the sun. If you choose to swim during the trip, avoid infection by not swallowing water and avoid contact with water that may be contaminated from poor sanitation. [Schistosomiasis](#) and [leptospirosis](#) are endemic in the Philippines so it is recommended to avoid swimming in fresh, unchlorinated water such as lakes, ponds, or rivers.

Over the Counter Medications

With recommend coming to the Philippines prepared with some cold/flu medications commonly found in the United States (i.e.: Sudafed, DayQuil, NyQuil, etc) as not all medications are available in the Philippines due to restrictions on the ingredients found in those medications. Other personal prescription medications should be properly labeled.

Health Insurance

While ambulatory consultations for minor situations at local clinics and hospitals is relatively inexpensive (~\$10 USD to \$25 USD), it is recommended that mission personnel obtain a Pre-Authorization Letter for one of the local hospitals in Clark for any serious emergencies. The recommended facility is the Medical City Clark (Fig. 4) located at 100 Gatwick Gateway, Clark Global City, Clark Freeport, Mabalacat, 2023 Pampaga, Philippines. Phone: +63 45 300-8888 www.themedicalcityclark.com





Fig. 3: Medical City Clark Hospital

Vaccinations

Outbreak alert: There is an outbreak of **measles** in the Philippines. Travelers to the Philippines should be vaccinated against measles ([more information](#)).

When traveling it is always important to consult with your physician. It is also advisable to read the [CDC guidelines](#) for travel to the Philippines. Only **recommended vaccinations for all and most travelers** as listed on the CDC website will be reimbursed for those traveling via SSAI. Information below is our collective, best guidance, but your provider is your best source of advice.

You should be up to date on routine vaccinations (**measles-mumps-rubella (MMR)**, diphtheria-tetanus-pertussis, varicella (chickenpox), polio, and yearly flu shot) while traveling to any destination. CDC also recommends vaccinations for Hepatitis A and Typhoid to protect against contaminated food. Hepatitis B, Malaria, and Rabies are recommended on a case by case basis so please review the CDC guidelines.

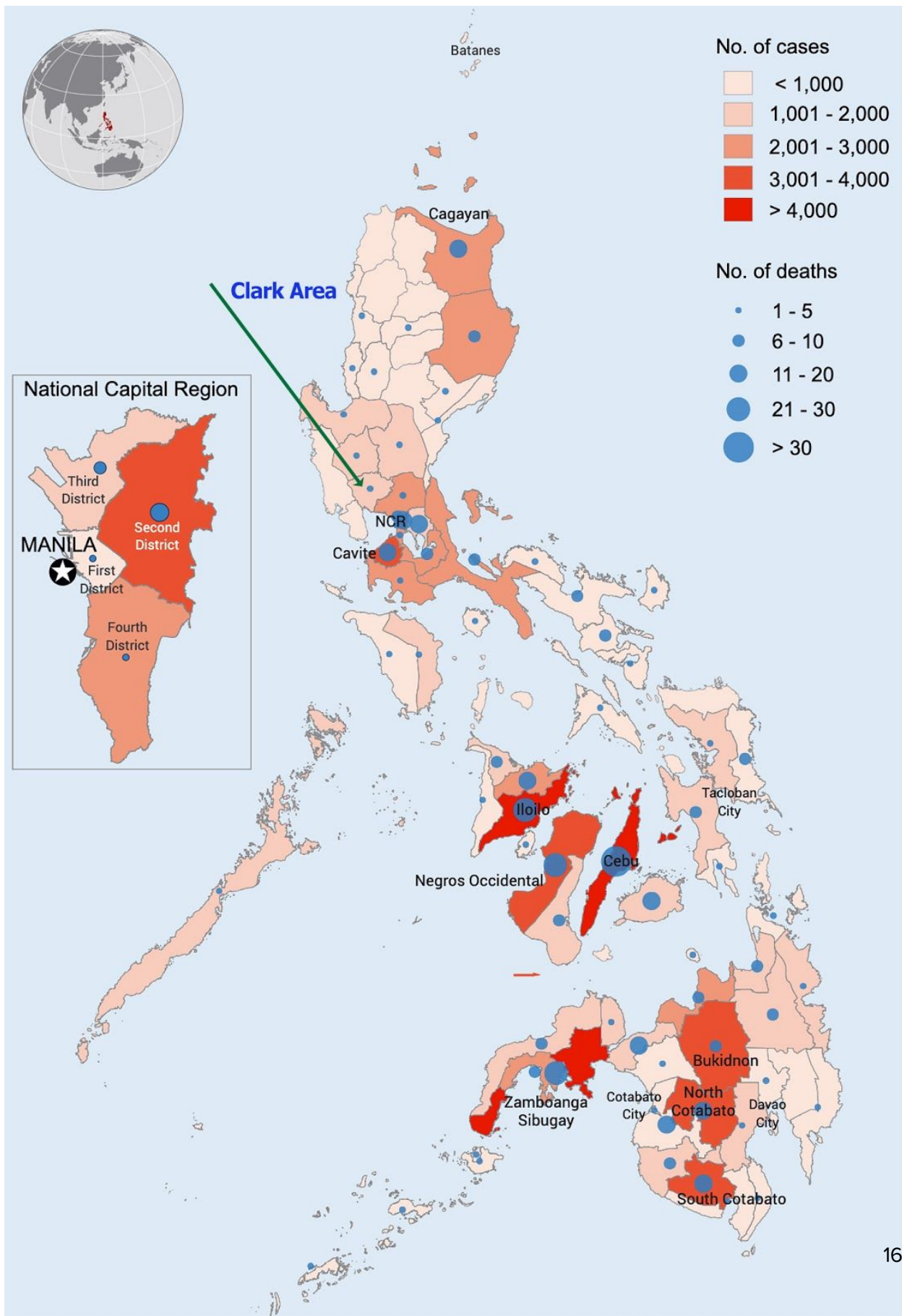
Japanese Encephalitis (JE) is an incurable virus transmitted to humans through infected mosquitoes. JE virus is the most common vaccine-preventable cause of encephalitis in Asia. Human, animal, and mosquito studies have indicated transmission in 32 provinces in the Philippines and is presumed to be endemic countrywide. The transmission season is year-round with peak season in April-August. Several traveler cases have been reported recently. You should consult with your doctor and consider this vaccine if you will be spending a lot of time outdoors, even for trips shorter than a month. The vaccine requires **two doses with a spacing of 7 to 28 days between doses** and should be effective about 1 week after your final dose. Travelers should consult with their physicians to determine if the JEV shots are required. Should the vaccine be needed, *CAMP2Ex will cover any portion of the cost of the vaccines that are not covered by the traveler's health care provider. (Please keep all related receipts/documentation to provide to SSAI after the trip.)*

Dengue Fever and Preventing Mosquito Bites

When traveling to the Philippines, it is important to protect yourself from mosquito bites as they can carry many harmful diseases including: [Chikungunya](#), [Dengue](#), [Japanese Encephalitis](#), [Malaria](#) and [Yellow Fever](#). Although there is a declared national emergency related to the Dengue epidemic, it is mostly localized to the regions south of Manila, with a minimum number of cases that have occurred in the Clark area. See below a map of Dengue cases in the Philippines as detailed on this website:.



<https://reliefweb.int/sites/reliefweb.int/files/resources/OCHA-PHL-Dengue-Snapshot-Jan-June-2019-final.pdf>



Travelers to high risk regions can wear long-sleeved shirts and pants, socks and a hat. Tuck your shirt into your pants and tuck your pants into socks for maximum protection. Travelers are advised to treat clothing with Permethrin or purchase clothing that is pre-treated with insect repellent. Do not put permethrin directly on skin. Use insect repellents that contain at least 20% DEET like Cutter Backwoods and Off! Deep Woods. Higher percentages last longer but over 50% is not any more effective. Do not spray DEET on the skin if the skin will be under clothing.

Your Arrival to the Philippines

Arriving to Manila International Airport (MNL) from the US and other major destinations will be the most common, available, and economic route; from there a taxi ride will take you to Clark in about two hours--depending on traffic. Flying into Clark International Airport (CRK) from the US is possible from connections at Incheon International Airport (ICN) with Asiana Airlines (part of the Star Alliance) or Hong Kong International Airport (HKG) with Cathay Pacific (OneWorld). Other regional flights arriving at CRK include: Manila (MNL), Singapore (SIN), as well as Guangzhou Baiyun International (CAN) and Macau International (MFM).

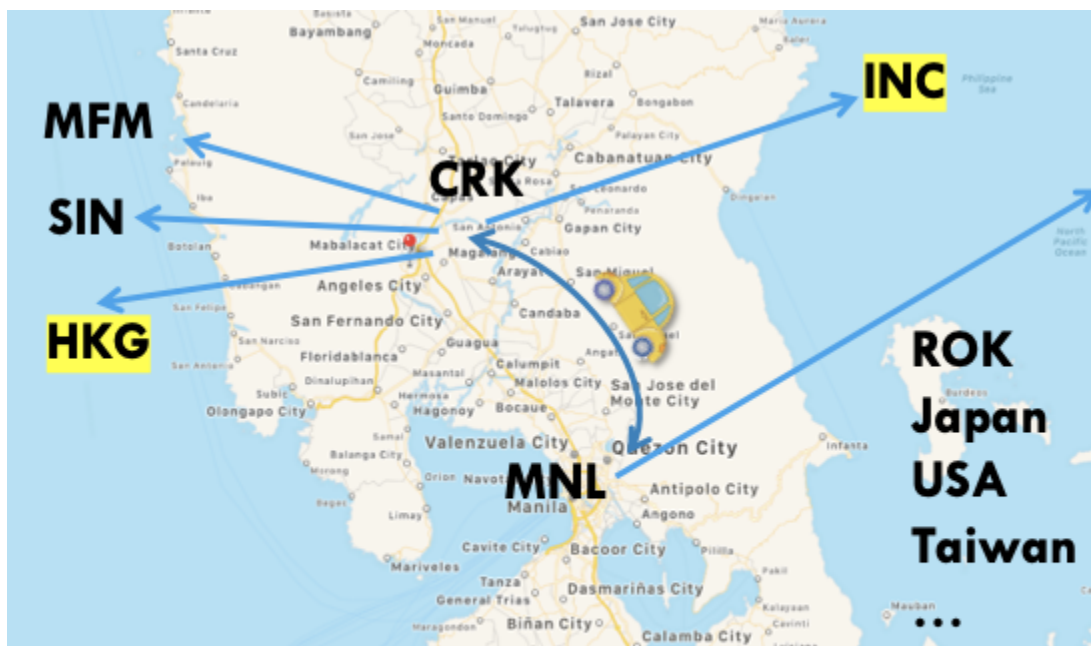


Fig. 4: Arrivals into CRK and MNL

Cash and ATMs

It is a good idea to have a certain amount of cash on hand upon arrival to pay for taxis, small purchases, restaurants, sim cards, etc. How much depends on your spending habits. ATMs are widely available at airports and urban areas, but the ATM fees can range from \$8 to \$10 USD per withdrawal, plus whatever your bank charges for international fees and out-of-chain fees. Credit cards are accepted at hotels, restaurants and some shops. You might be charged foreign transaction fees between 1-5% for credit card transactions unless your credit card offers zero foreign transaction fees.

Common banks with ATMs are Banco de Oro (BDO), Bank of the Philippine Islands (BPI) and Metrobank. Standard charge is ₱200 per withdrawal (\$4). ATM withdrawal limits are usually ₱10,000 - ₱15,000.

Traffic

Vehicle traffic outside the capital city of Manila is mild and usually not congested. Manila is another story. Getting from MNL to Clark can take you anywhere from two hours (between 8pm and 6am) to 3-4 hours in rush hour traffic (4pm - 7pm). Most of this time will be spent getting out of the Manila Metropolitan area. Traffic in the city is also very congested - it could take you an hour or more to cover a distance of 1-2 miles during rush hour. We recommend flying into Clark International Airport instead of Manila.



Fig. 5: Metro Manila traffic

Arriving at Manila International Airport (MNL)

You can go from Manila to Clark either by TAXI or by CAMP2Ex Shuttle, depending on how many other travelers arrive with you. Either method is safe. The specific "bays" of where the official taxi queues (yellow or white taxis with side numberings) are located just outside all of the arrival terminals (1, 2, or 3), just follow the signs directing you to them or ask airport personnel. ESPO will be announcing via Email and WhatsApp the schedule of the CAMP2Ex Shuttles and meeting points (listed below).

Traveling by Taxi from MNL to Clark

1. Once at the Taxi Bay, the dispatcher (person assigning you to a particular cab) will ask you for your destination: **the Clark Marriott Hotel near Angeles City**. Since the destination is far from Manila, metering will not be applicable and you will have to agree with the taxi driver on a specific fare.
2. Let the driver do the first bid. While the official rate is almost ₱8,000 the driver might quote you a much lower rate (₱3,000 to ₱5,000). You'll also be asked whether you want to take the Toll Road (Skyway) and pay for the tolls, say yes, it will save you a lot of time but make sure you have cash for the tolls. The driver might add it at the end, or ask for money as you go through the toll booths. If you pay for the tolls, collect those receipts.
3. Once you agree on a rate with the driver, the dispatcher will give you a slip with your cab details. This is for your records only. You will pay the taxi driver upon arrival at the hotel. Ask for a receipt (the driver may or may not have one to give you).





TAGAYTAY CITY	- 12,850
BATANGAS PIER	- 6,230
CLARK	- 7,790
SUBIC	- 7,580
ANTIPOLLO	- 8,350
TAYTAY	- 5,780
MEYCA	- 5,400

Official taxis outside the arrival terminals at MNL. Price chart (which may vary) for a flat fare from MNL to Clark.

Taking the CAMP2Ex Shuttle from MNL to Clark

If your arrival date/time falls within the scheduled Shuttle Transportation, please go to the following locations where you will find the driver holding a CAMP2Ex Sign. He will walk you to the vehicle. DO NOT JUST FOLLOW ANYONE WITHOUT THE CAMP2Ex sign, if you have doubts, call/check with ESPO. We will send out specific driver/vehicle details for every pick up.

Terminal 1: Exit Arrivals area, go down the ramp, make a right turn and go to the letter "Z."

Terminal 2: Go to Bay 8

Terminal 3: Go to Bay 9

Arriving at Clark International Airport (CRK)

CRK is a small airport with only one terminal, the process is a lot simpler. Grab one of the many official taxis outside, agree on a set price with the driver, usually less than ₱500 (~\$5USD to ~\$10USD) for a ride to the Clark Marriott Hotel. You can also **request airport shuttle service from the Clark Marriott** for ₱600 (~\$11 USD) by calling the hotel before your arrival date and making a reservation. Check Whatsapp when you land as there may be a CAMP2Ex shuttle.

Ride Sharing App: **Grab**

As of February 2019, Uber wasn't working in Manila. The app to use is **Grab** (see links below). Grab just started servicing the Clark area and you can choose to pay in either cash or link a

credit card to the app. If you pay with a credit card you will be charged foreign transaction fees.

<https://itunes.apple.com/us/app/grab-app/id647268330>

<https://play.google.com/store/apps/details?id=com.grabtaxi.passenger&hl=en>

Lodging

There is a room block for our campaign at the Clark Marriott Hotel. **Specific instructions and a CAMP2Ex specific link to register and pay for your lodging will be sent out to everyone in late May/early June 2019.** The details are as follows:




- Address: 5400 Manuel A. Roxas Highway, Clark Freeport Zone, Pampanga, Philippines
- Phone: +63 45 598-5000
- Room rate: ₱4770 (including service charges)
- Check-in time: 3pm, Check-out: 12pm. Early check-in and late check-out possible depending on availability.
- Breakfast is not included (except for Marriott Platinum Elite members)
- Cable TV
- Mini-refrigerator
- Coffee/tea maker in every room
- Complimentary bottled water replenished daily
- Complimentary use of outdoor pool and fitness center
- All rooms are non-smoking
- Complimentary High Speed Internet
- Executive Lounge for Marriott Platinum Elite members

Early departure Fee

In the event that a guest who has reserved a guest room within the group's Room Block checks out prior to the guest's reserved checkout date, an early departure fee will be charged to that guest's individual credit card account. Guests wishing to avoid this fee must advise Hotel at or before check-in of any change in the scheduled length of stay.

**Early Departure
Notice**

Total Room Charges



0 to 13 days prior to check-out date	100% of the total room charges
14 to 29 days prior to check-out date	50% of the total remaining room charges
30 to 44 days prior to check-out date	25% of the total remaining room charges
On or before check-in date	No early departure fees shall be imposed

Car Rentals

Car Rentals are not authorized expenses for this deployment, with the exception of the WFF P-3 and ESPO groups. There are several options for vehicle rentals at both Clark and Manila international airports. However, it is recommended that vehicle rentals be requested/coordinated via ESPO for vehicle pick-up/drop off at Clark. ESPO has pre-arranged transportation with a local service provider (SPDS, Inc.) to rent fully insured vehicles (with a \$1000 deductible). Driving in Manila (or from Manila to Clark) is extremely discouraged due to the high propensity for accidents and traffic.

CAMP²Ex Operations at Clark

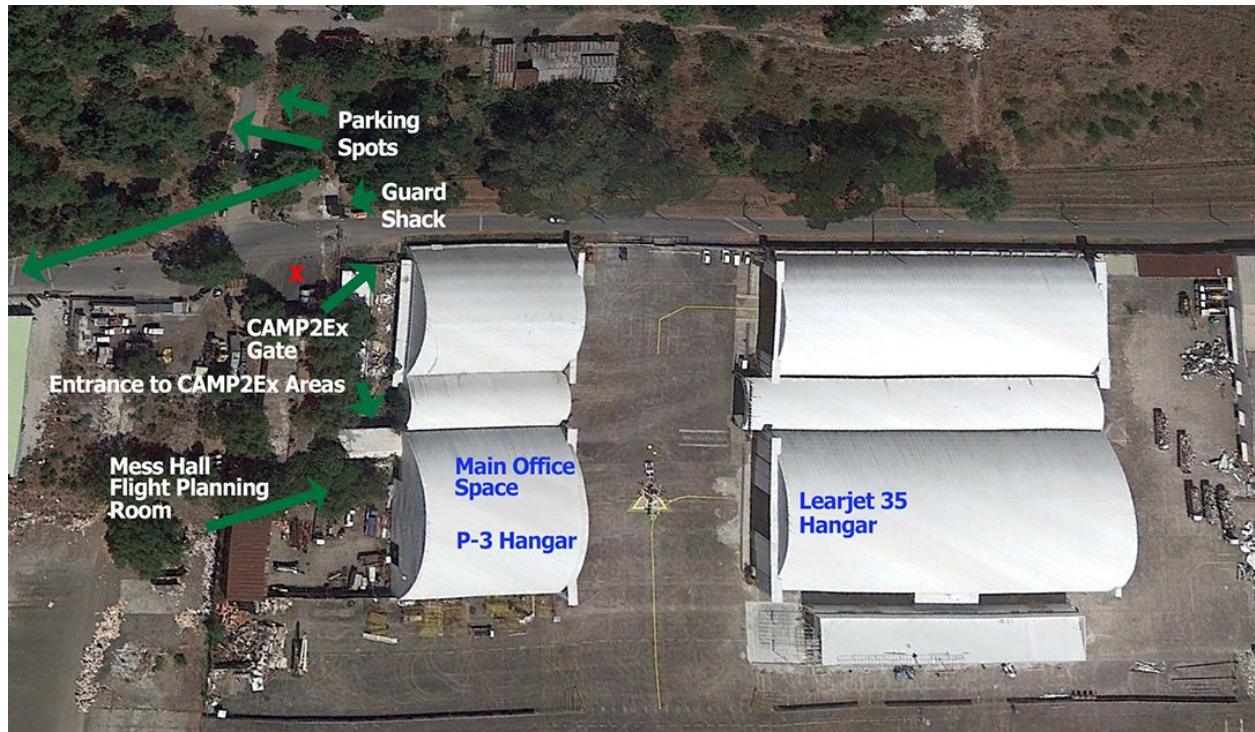
CAMP²Ex Mission Check-in

When you arrive, check the Plan of the Day for New Arrival Instructions. The process to get an airport badge has changed slightly.

Asian Aerospace Hangars

The Asian Aerospace hangars, our main base of operations, are located 1.7 miles / 2.7Km from the Clark Marriott Hotel.. Our operations will take place in two main areas: Large C6 Hangar (NASA P-3, Main Office Area, Flight Planning Room, ESPO Room, Dining Area and the C3 Hangar right across from it (LearJet 35, additional lab spaces). The hangars can be accessed via an auxiliary gate located near the intersection of Claro Recto Hwy and

Gagaban Street. Sea containers are located behind the Learjet hangar.



Ground view of Asian Aerospace hangars.

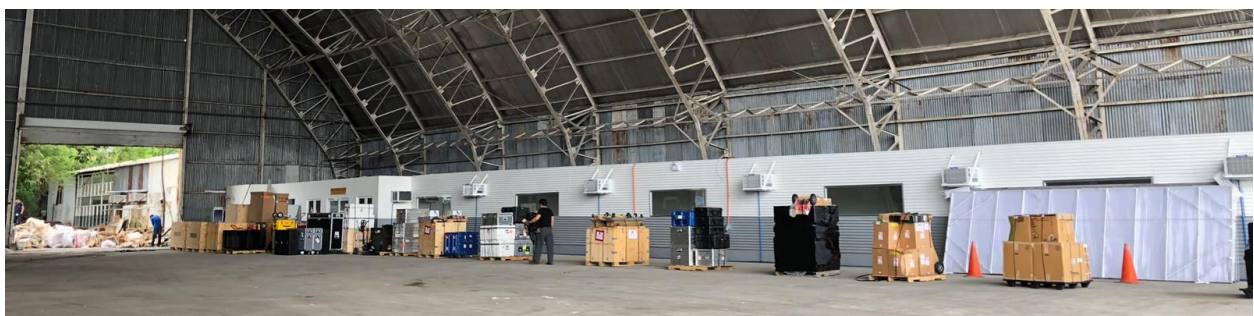
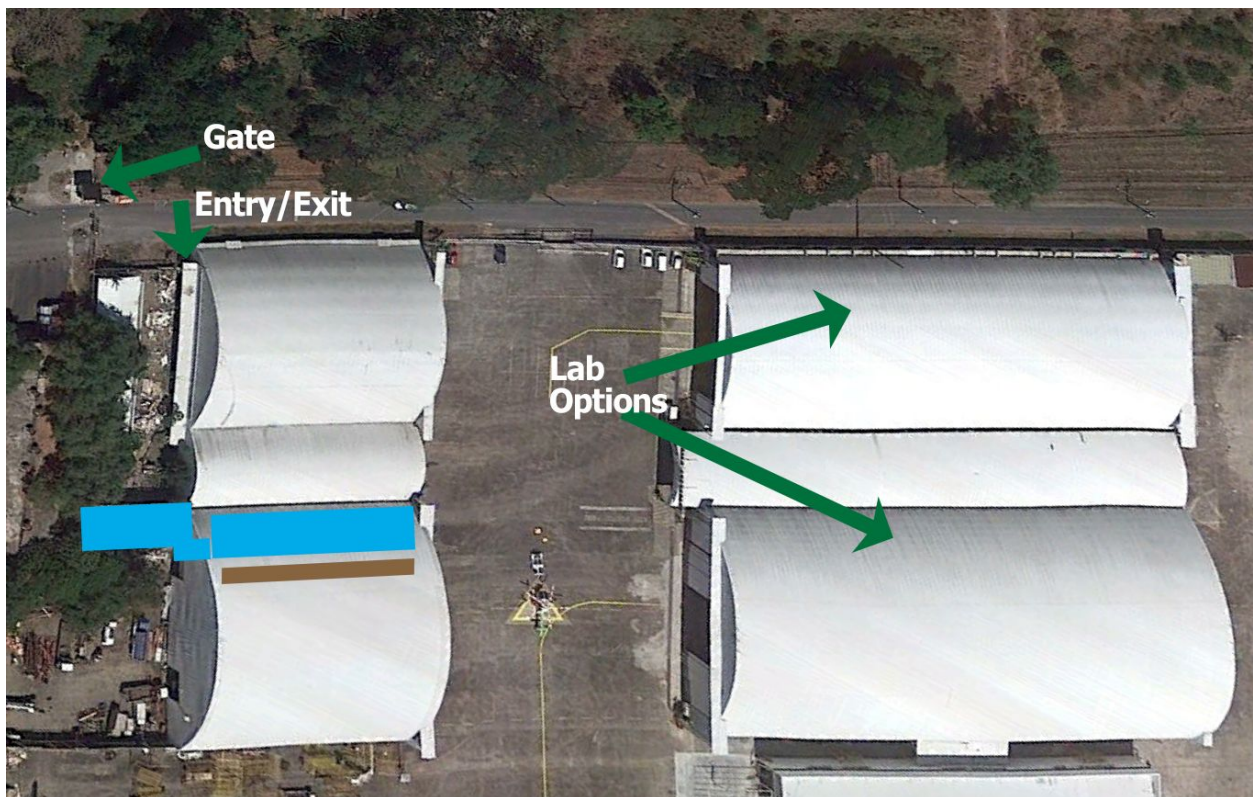
CAMP2Ex Workspace Areas

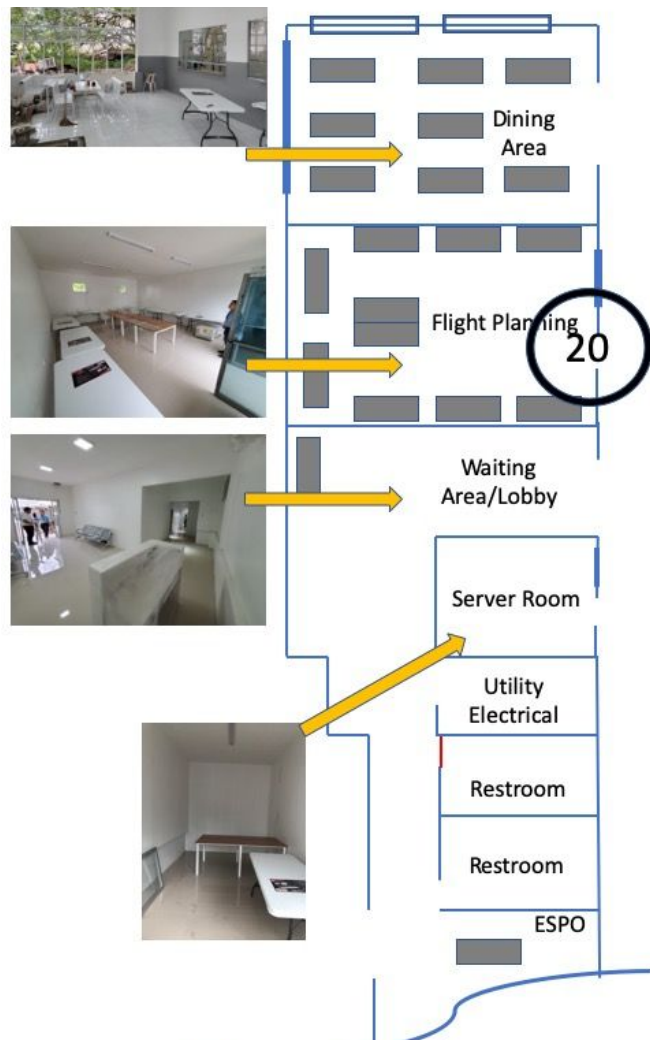
Our workspace has the following workspaces (they might vary slightly):

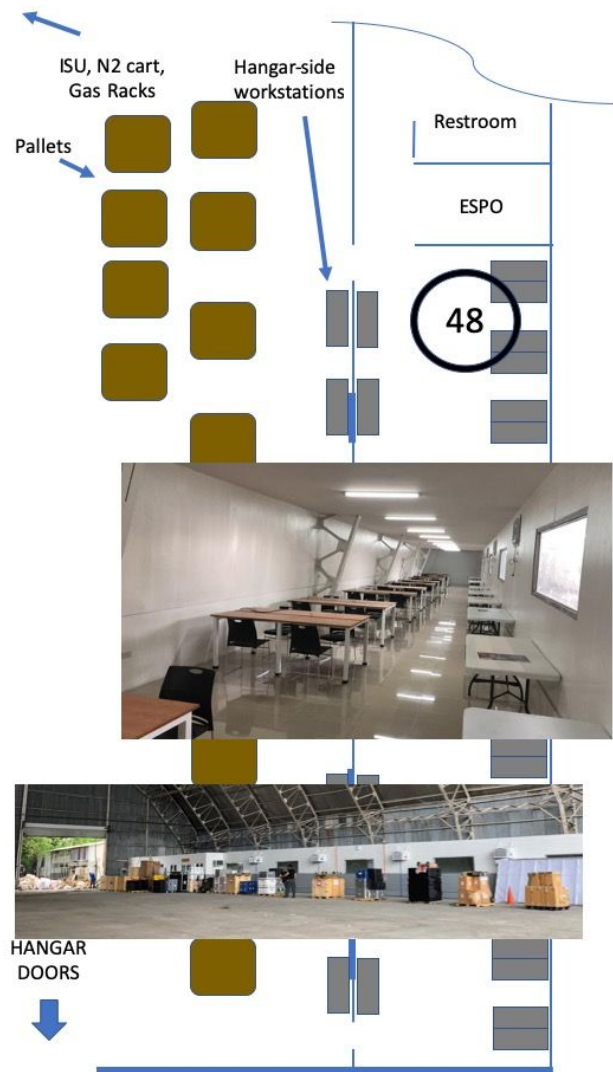
1. **Hangar floor on Hangar C6:** P-3 hangar: It houses everything with the exception of the Learjet 35 and the clean room/lab space for LARGE and RSP. In this area you will find:
 - a. P-3 aircraft
 - b. Compressed gases
 - c. ISU
 - d. N2 cart
 - e. CAMP2Ex cargo pallets

- f. Main Office Area
- g. ESPO office
- h. Restrooms
- i. Small office/Waiting area
- j. Server and LN2 Room
- k. Flight Planning Room
- l. Dining Area
- m. Access gate/turnstile

2. **Hangar C3:** Learjet 35







General Orientation



Local Area

To visit the town of Angeles we recommend using Grab, it is safe and at a fraction of the cost of a taxi called by the hotel. Use the same method to return to the hotel.

Shopping Malls

[SM City Clark](#) – Perhaps the biggest and most popular mall in Angeles and has a wide variety of shops available. Near the main gate Clark Freeport Zone. Hours 10am-9pm

[Robinson's Mall](#) – Smaller but popular mall that also has an indoor bazaar. Performances & live music on weekends. MacArthur Hwy. near Balibago Bridge. Hours 10am-9pm

[Nepo Mall](#) - Popular mall with many bargain stores. Downtown Angeles. Hours 10am-9pm

[Marquee Mall](#) – A more upscale mall. Near Angeles City Hall. 9:30am - 9pm (sometimes 9:00am)

[Puregold](#) – Warehouse type stores, similar to Costco/Walmart. Large one in Dau, and smaller one in Balibago.

Grocery Markets

[Johnny's Supermarket](#) (8am-8pm) on MacArthur Hwy. and [JJ Supermart](#) (24 hours) on Fields Ave. are the best for finding American brands.

Local Markets

Apu Friday Market – Billed as a flea market, but actually most all items are new. Lots of clothing, shoes, kitchen goods, and toys. Prices vary from stall to stall but they are not fixed and haggling in a friendly way is expected. Watch out for pick-pocketers and keep your valuables in front of you. This market takes place every Friday afternoon on Burgos, Plaridel, Rizal, and C. Dayrit streets, downtown Angeles.




Fig 14: Apu Friday Market ([source](#))

[Pampang Market](#) - Large local night market featuring produce and meat. Maze-like and crowded. Open 18:00 to 07:00. San Francisco St., Angeles.

Laundry Services

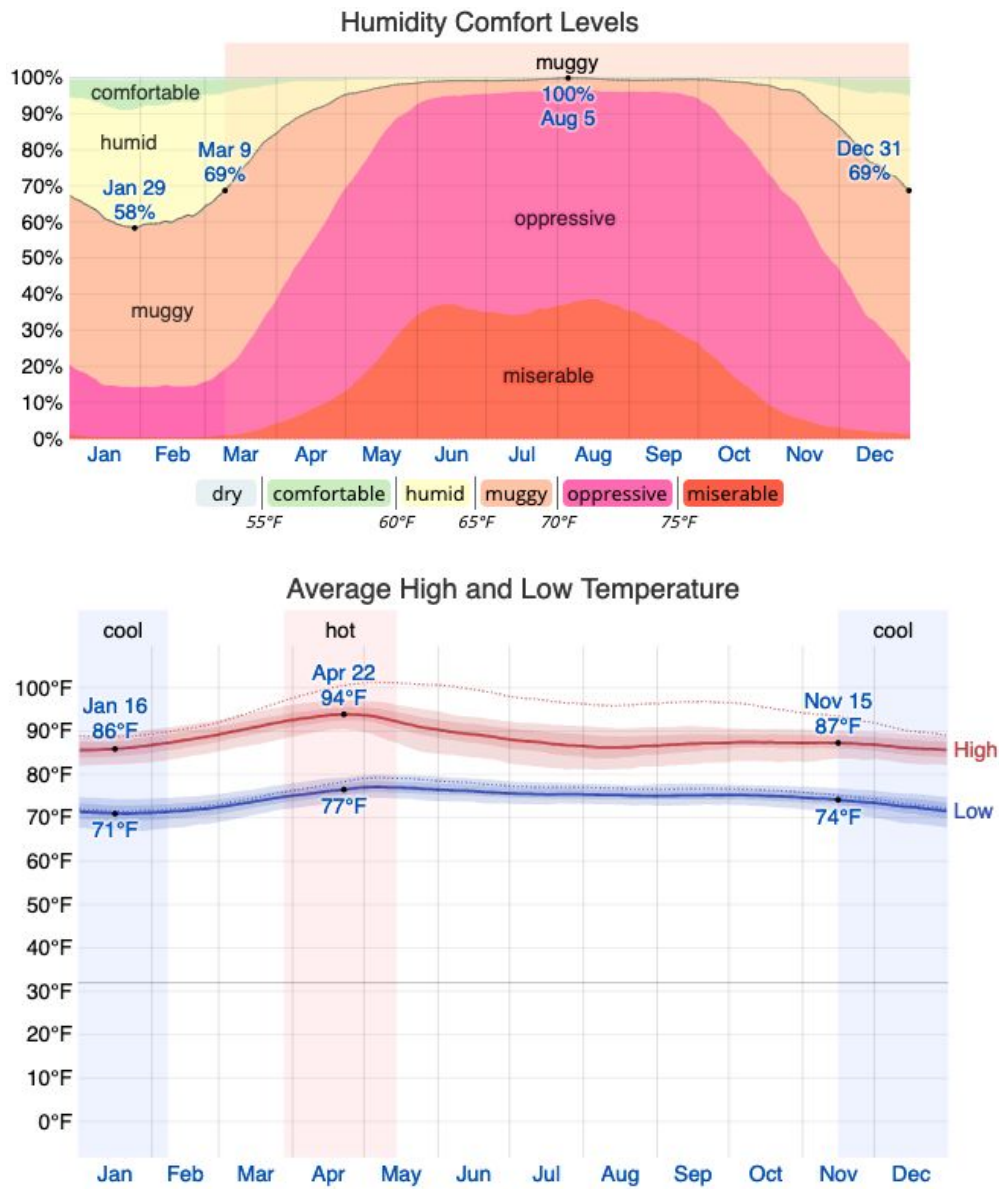
We'll be working with **My Cutie Pony Laundry Shop POC: Drei**, +63 917 244 0775 located at: <https://goo.gl/maps/Ckc3aUtdFAhKLBx68> The process is the following:

1. Using your own phone (WhatsApp) or the NASA CAMP2Ex local phones located in the hangar office area, contact the number above to schedule your own laundry pickup from the Marriott hotel (provide them your NAME and ROOM NUMBER and mention that you are with the NASA group).
2. At the pre-arranged time, they will come to the hotel (outside the lobby) and text you to bring your clothes. They might be too shy to ask the reception to call you, so keep an eye on your phone.
3. When you hand them your clothes, they will give you an estimated time to have them returned to you. Ensure that it falls within your availability to receive it at the hotel.

- 
4. . The cost is: 220PHP per load (no more than 7Kg) plus 100PHP for pickup or delivery (200PHP for both). The total service is around \$6USD per 7Kg of laundry, including delivery. Please tip them.
 5. Their services are open everyday from 0800 - 2100 hours -but usually won't pick up clothes after 1800. There might be some modified schedules on Sundays and holidays.
 6. Check with other members in your team to plan for simultaneous laundry pick-up and return.
 7. The Marriott provided laundry bag are excellent for marking them with your name and room number.

Appendix

Climate Information



(Image Source)

Dialing Numbers to/from/in the Philippines

Calling the Philippines from the United States

- 011 - US exit code; dial first for international calls made from the USA or Canada
- 63 - Country Code for the Philippines
- Phone Number ([may not begin with 0](#)):
 - Landline: 8 or 9 digits, area code included
 - Cell phones - 10 digits
- Sample call from US to a landline in Manila: 011 63 2 XXX-XXXX or +63 2 XXX-XXXX

How to Dial a Philippines Cellular

- Dialing format for calls to a cell phone: 011 63 9XX-XXX-XXXX or +63 9XX-XXX-XXXX
- Some cellular numbers may have less digits; however the first digit is always 9

Calling the US from the Philippines

As a frequent international traveler, it is a good idea to add the country code for each phone number. In the United States, for example, the country code is (+1) (e.g.: +1 650 604-0125). Dialing a number back home while abroad might result in calls to a local number instead. This is true for all numbers, but especially for those with similar area codes to that of the Philippines. Some states in the US have phone numbers that start as "63" (Illinois, New York, Missouri for example).

Shipping to/from the US (and other countries)

Refer to the ESPO CAMP2Ex website:

https://espo.nasa.gov/camp2ex/content/CAMP2Ex_Shipping