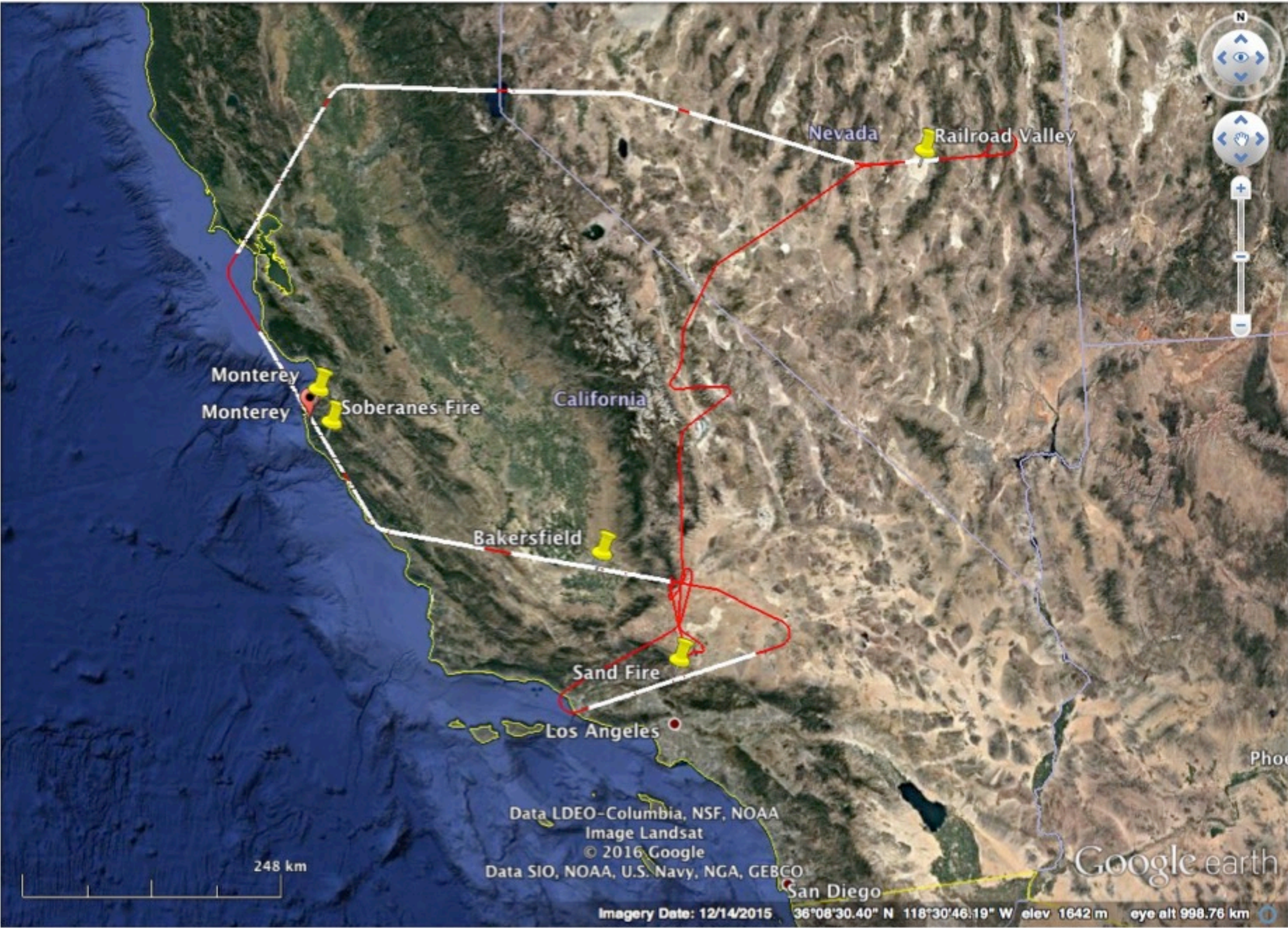


ORACLES 2016 – check flight AirMSPI – Thursday, July 28

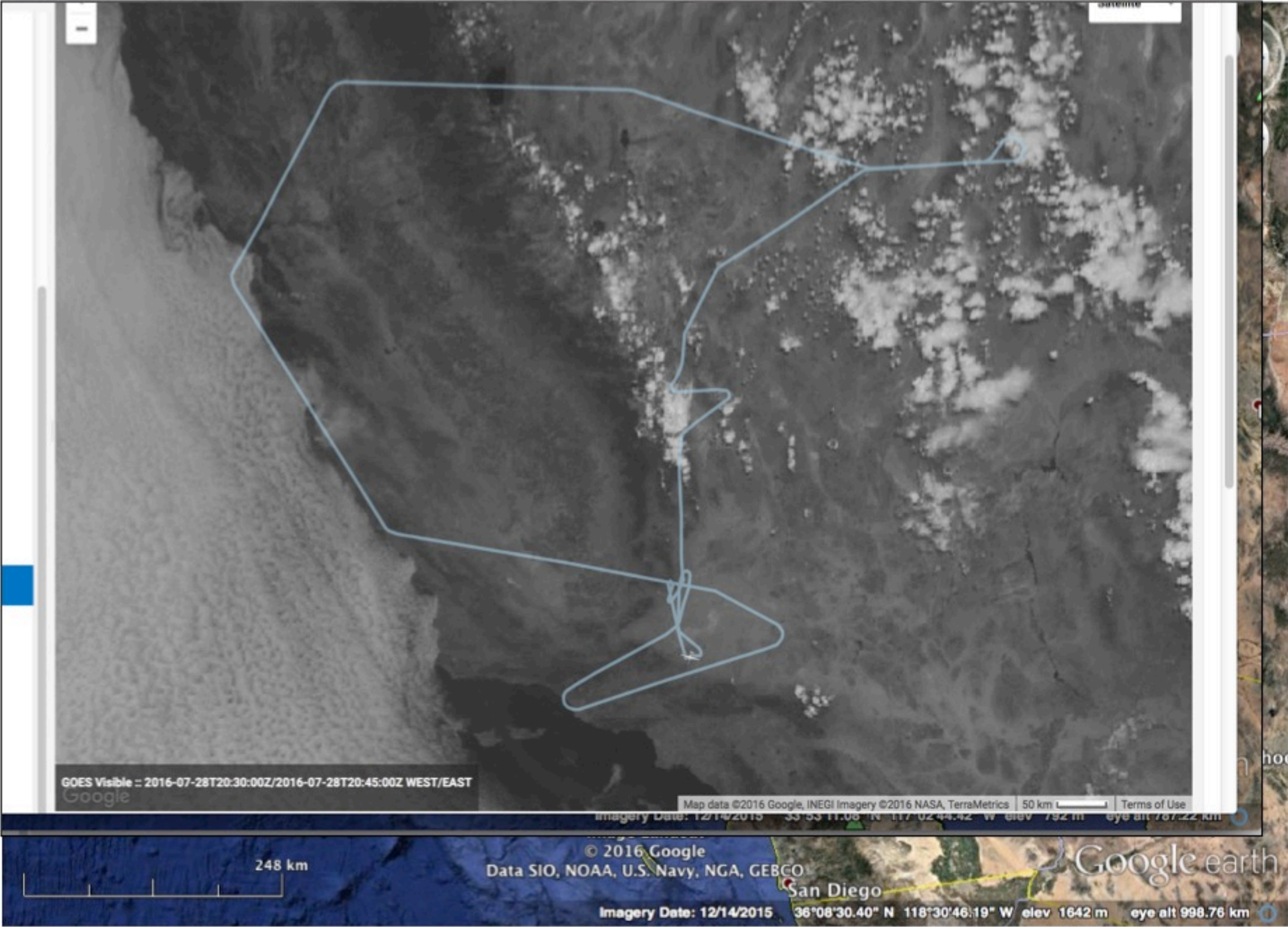
- ER-2 (809)
- 4.1-hour flight
- AirMSPI + RSP + HSRL2 + eMAS + AERONET
- Mostly cloud-free sky, aerosol optical depth ~ 0.2
- Soberanes fire + Sand fire
- N3: step-and-stare (3x)
- N4: sweep (5x)
- N5: nadir stare (2x)
- Quicklooks:
 - RGB color composites of intensity data at 445, 555, 660 nm
 - NGB color composites of intensity data at 445, 555, 865 nm
 - DoLP color composites of DoLP data at 470, 660, 865 nm

Flight overview



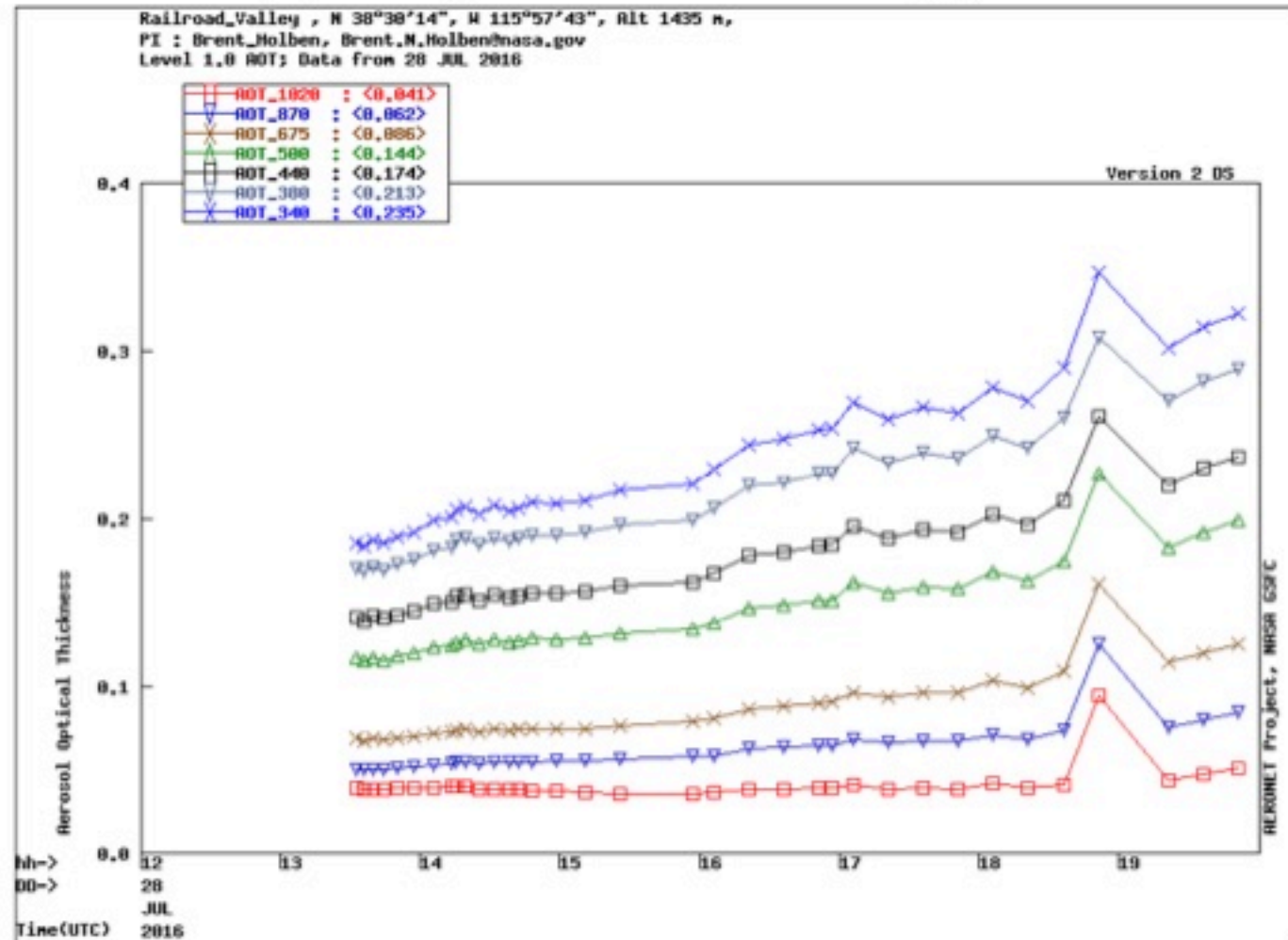
ER-2 flight track:
10 AirMSPI measurements

Flight overview

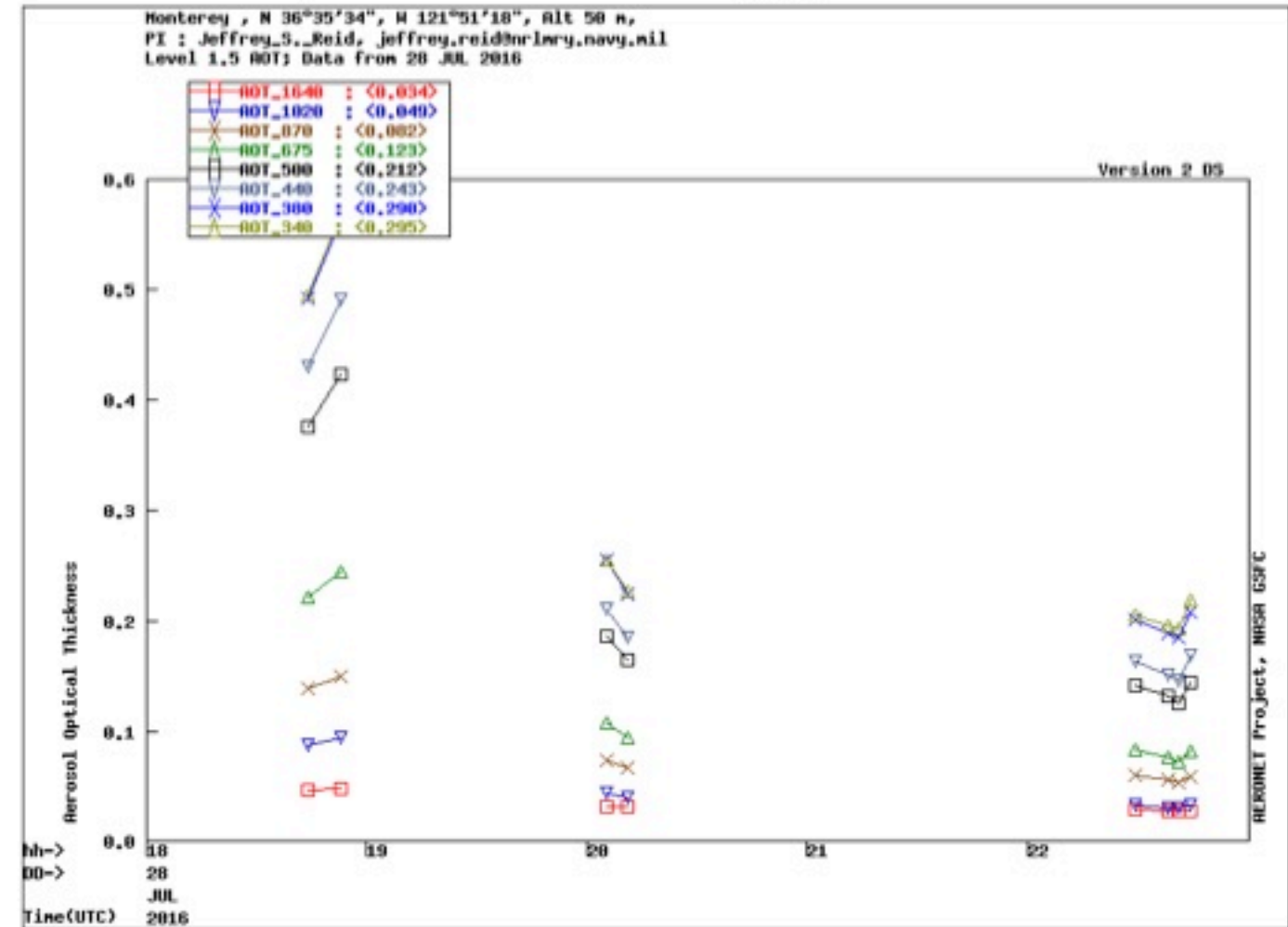


ER-2 flight track:
10 AirMSPI measurements

Railroad_Valley AERONET AOD₅₀₀ = 0.15



Monterey AERONET AOD₅₀₀ = 0.2



1. Railroad Valley W-E



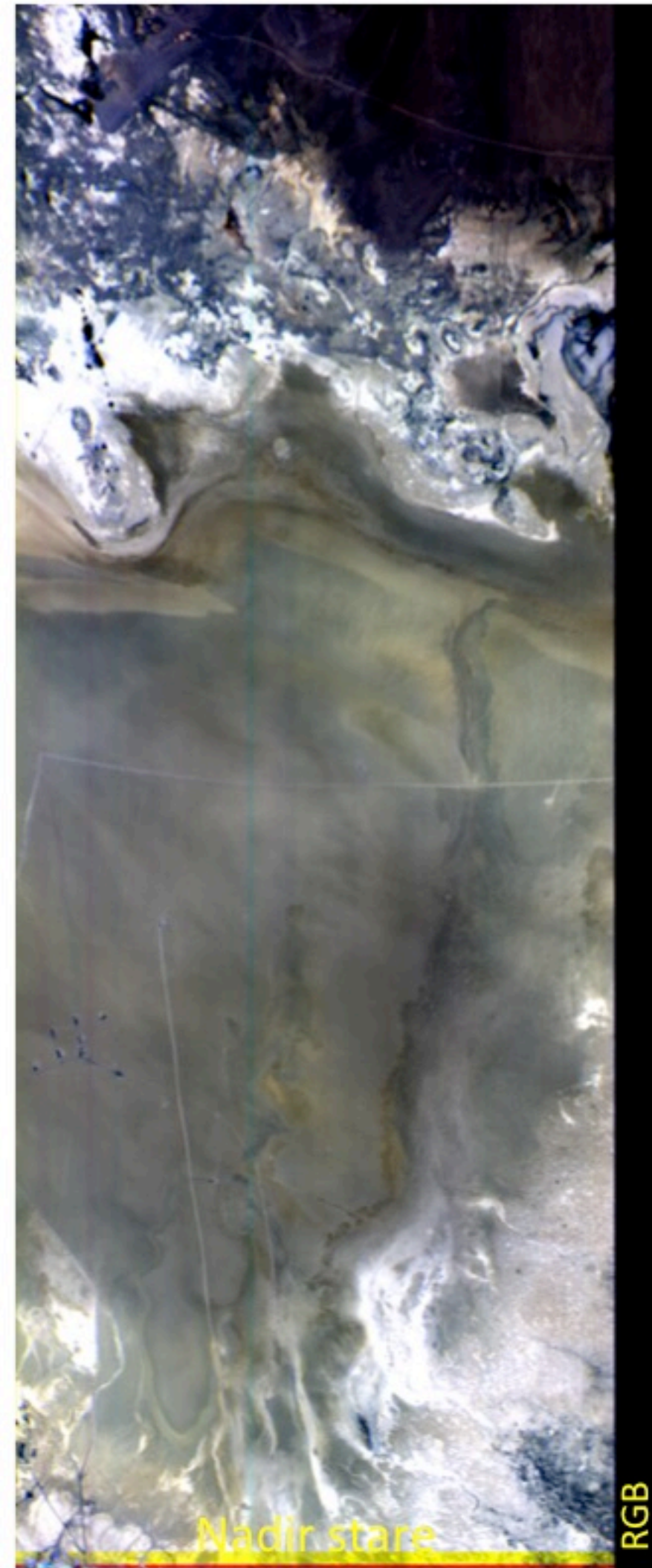
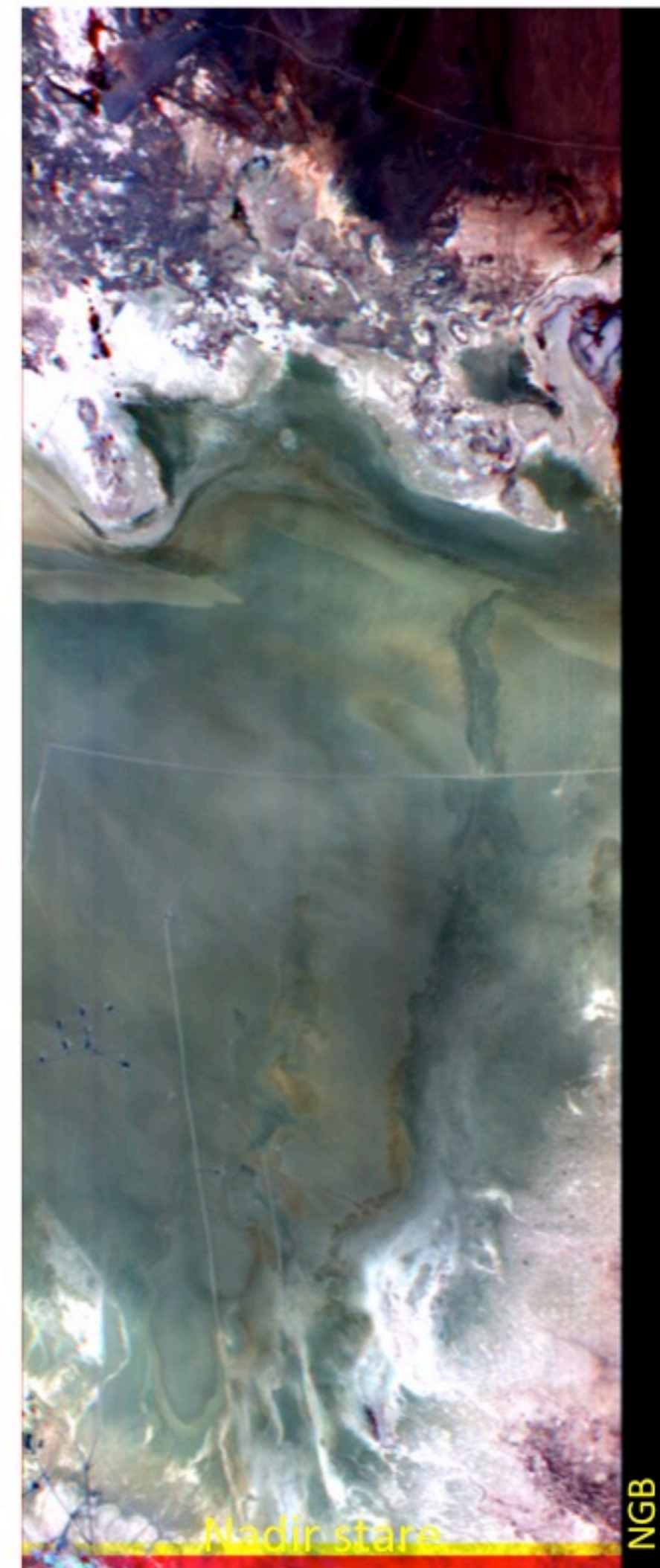
Nadir stare

NGB

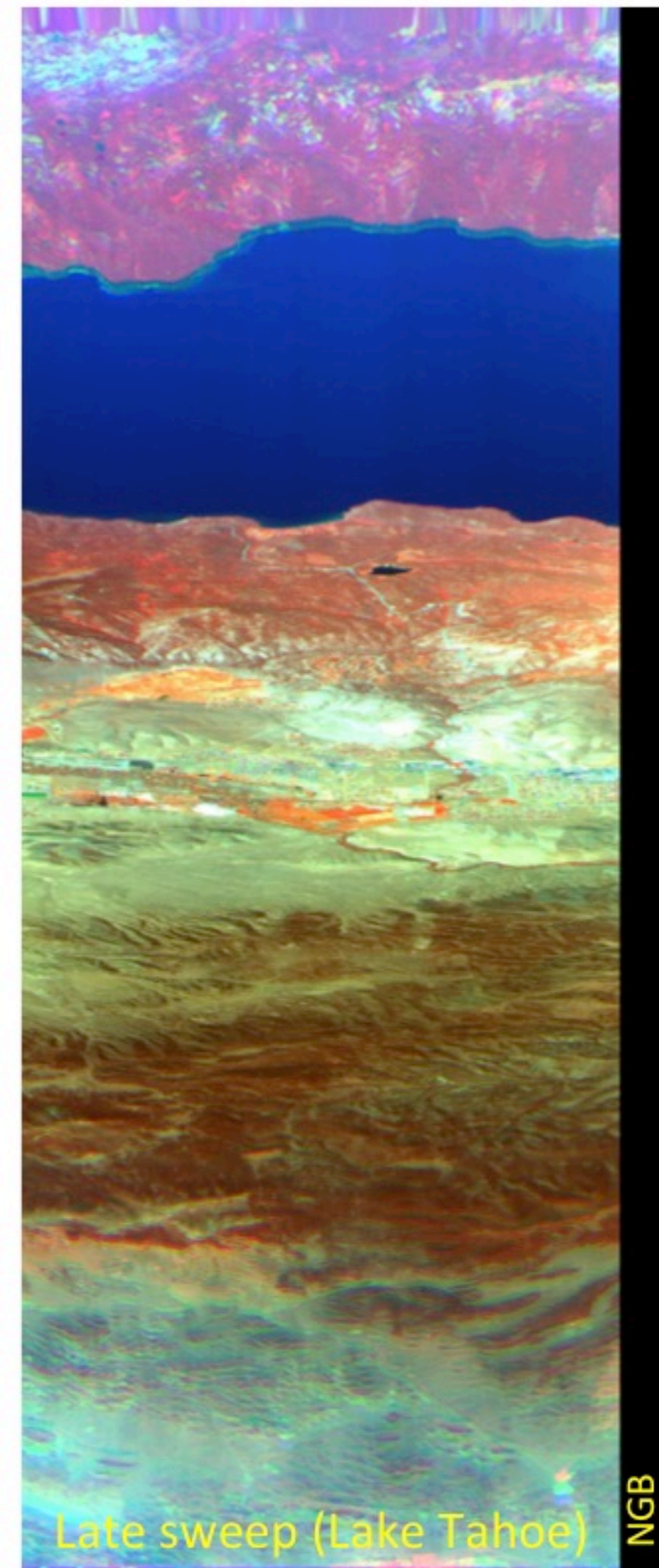
Nadir stare

RGB

2. Railroad Valley E-W



4. Sweeps E-W

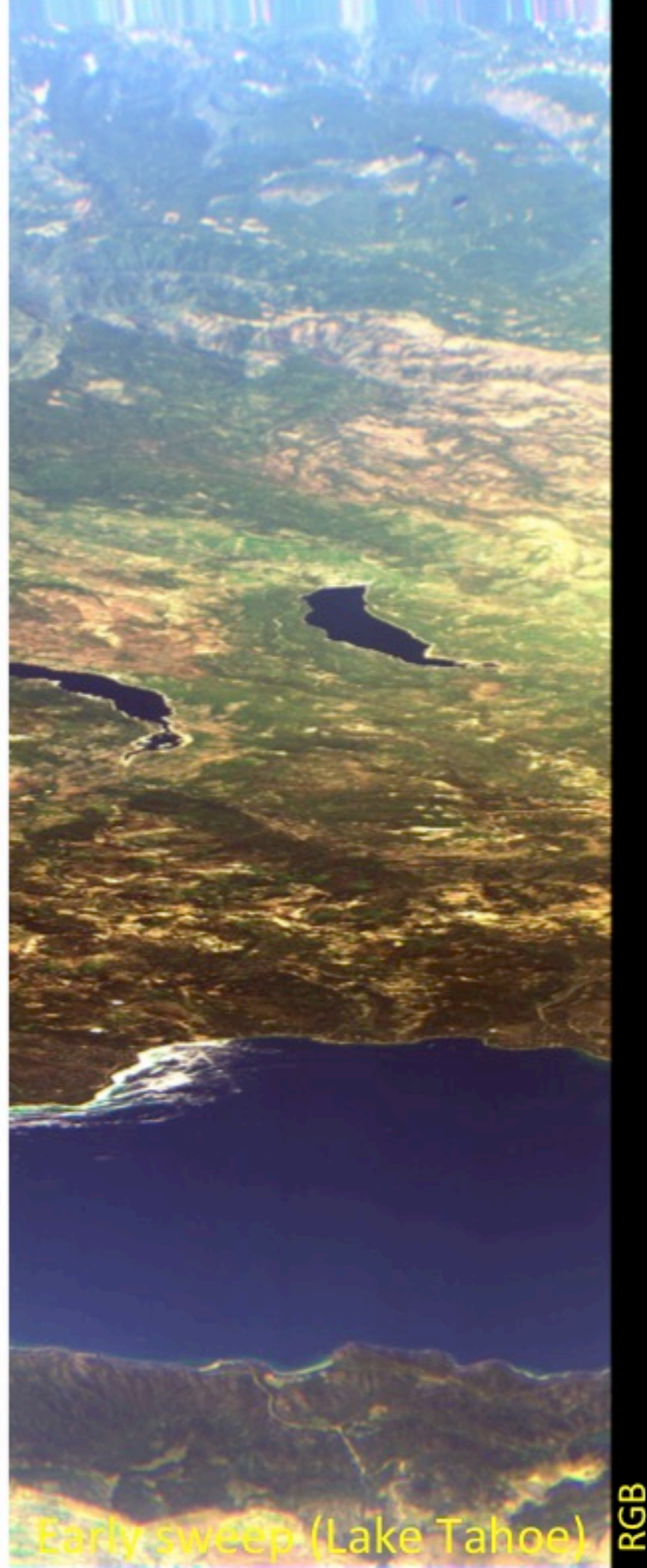
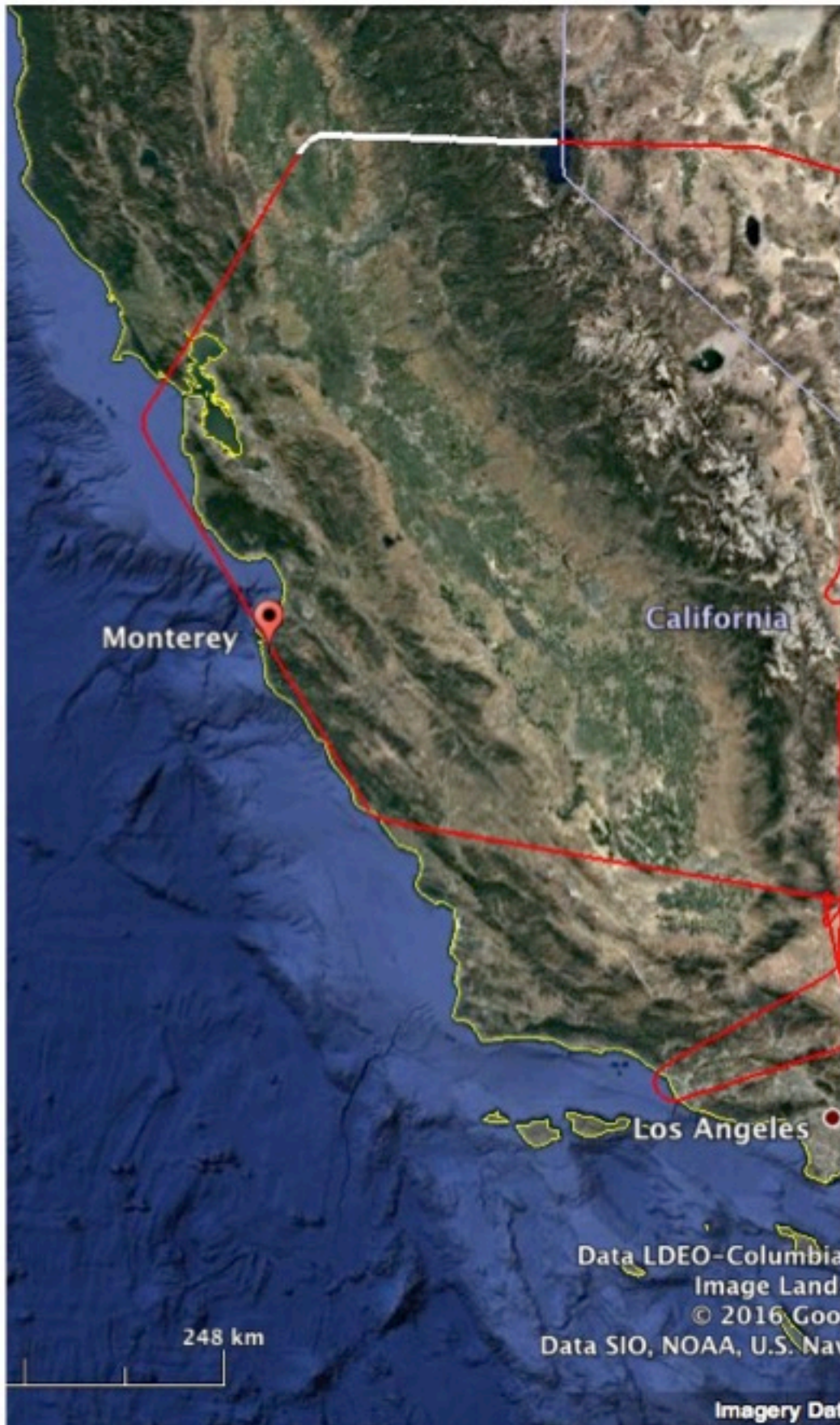
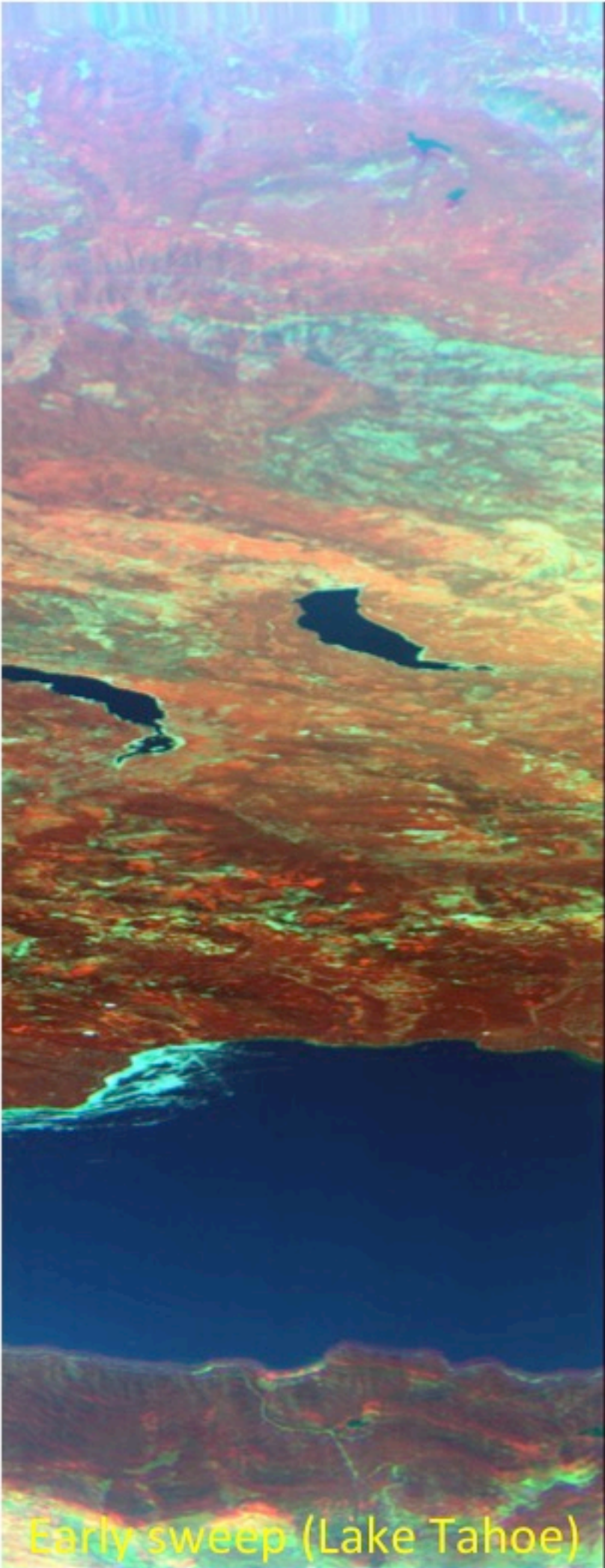


Late sweep (Lake Tahoe)

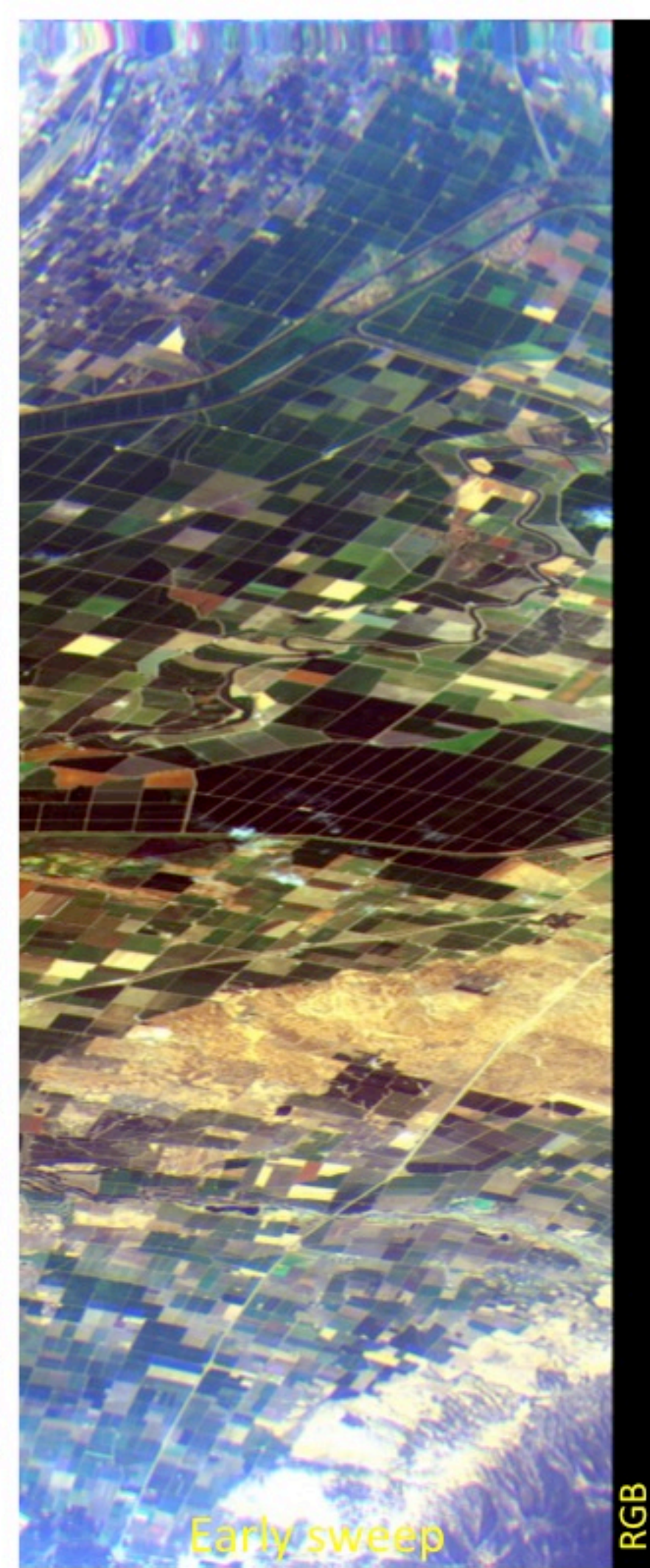
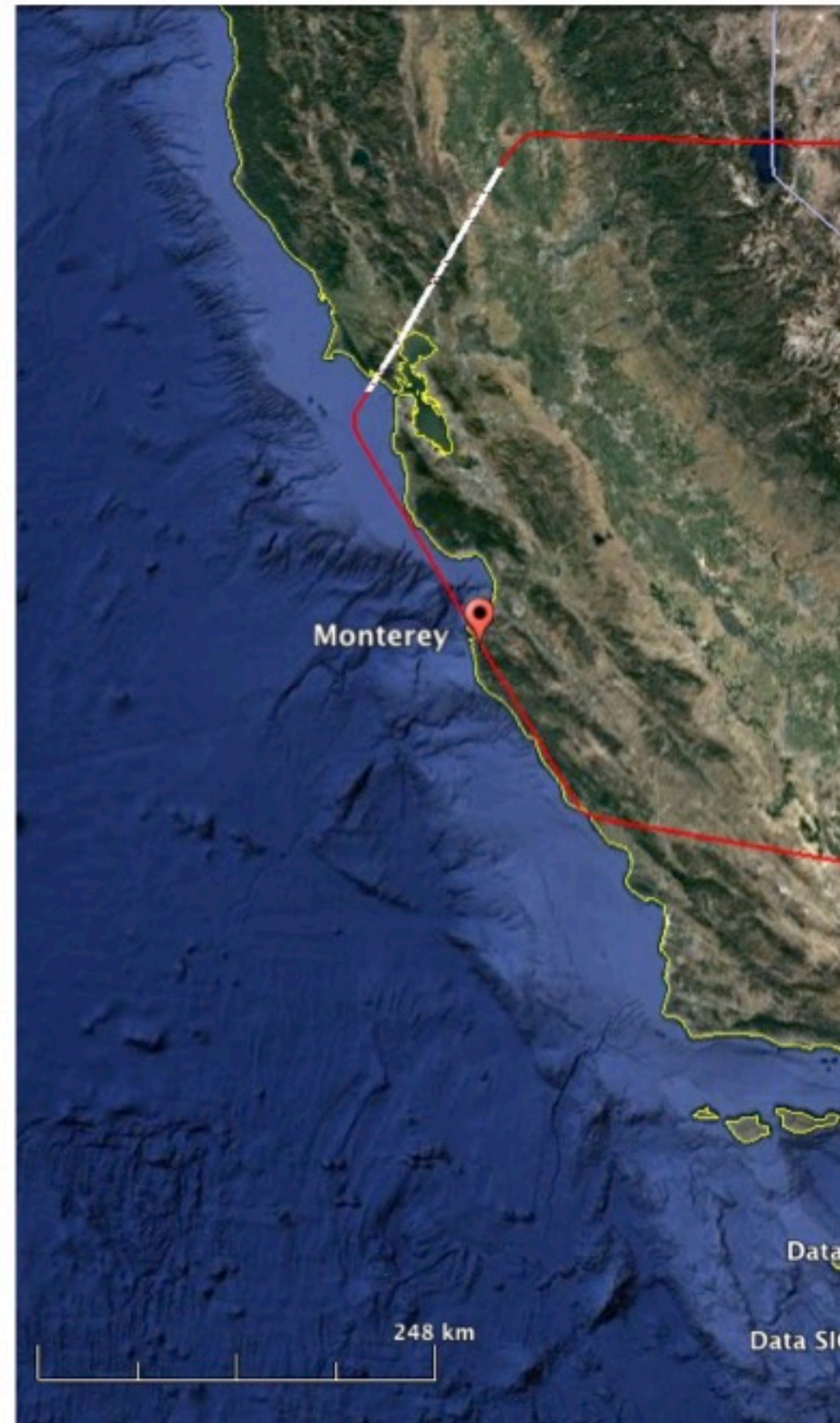
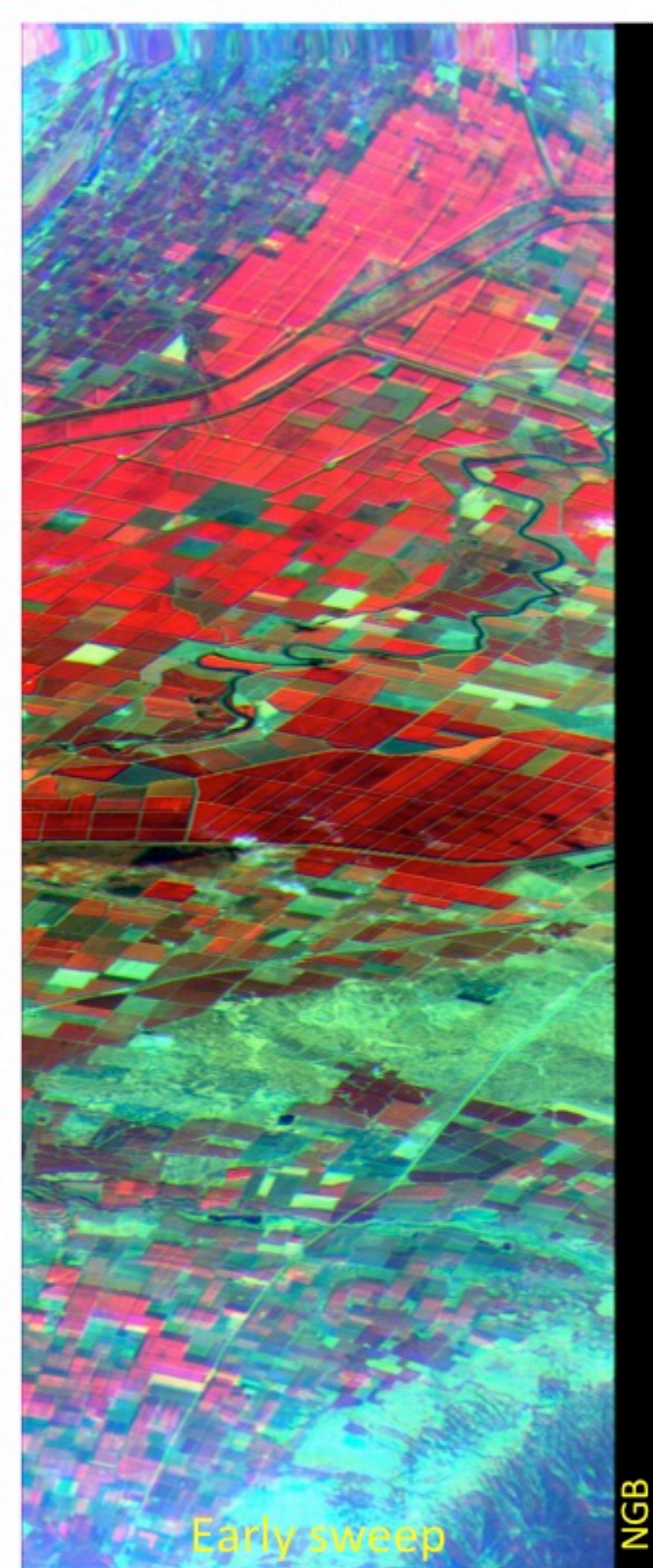


Late sweep (Lake Tahoe)

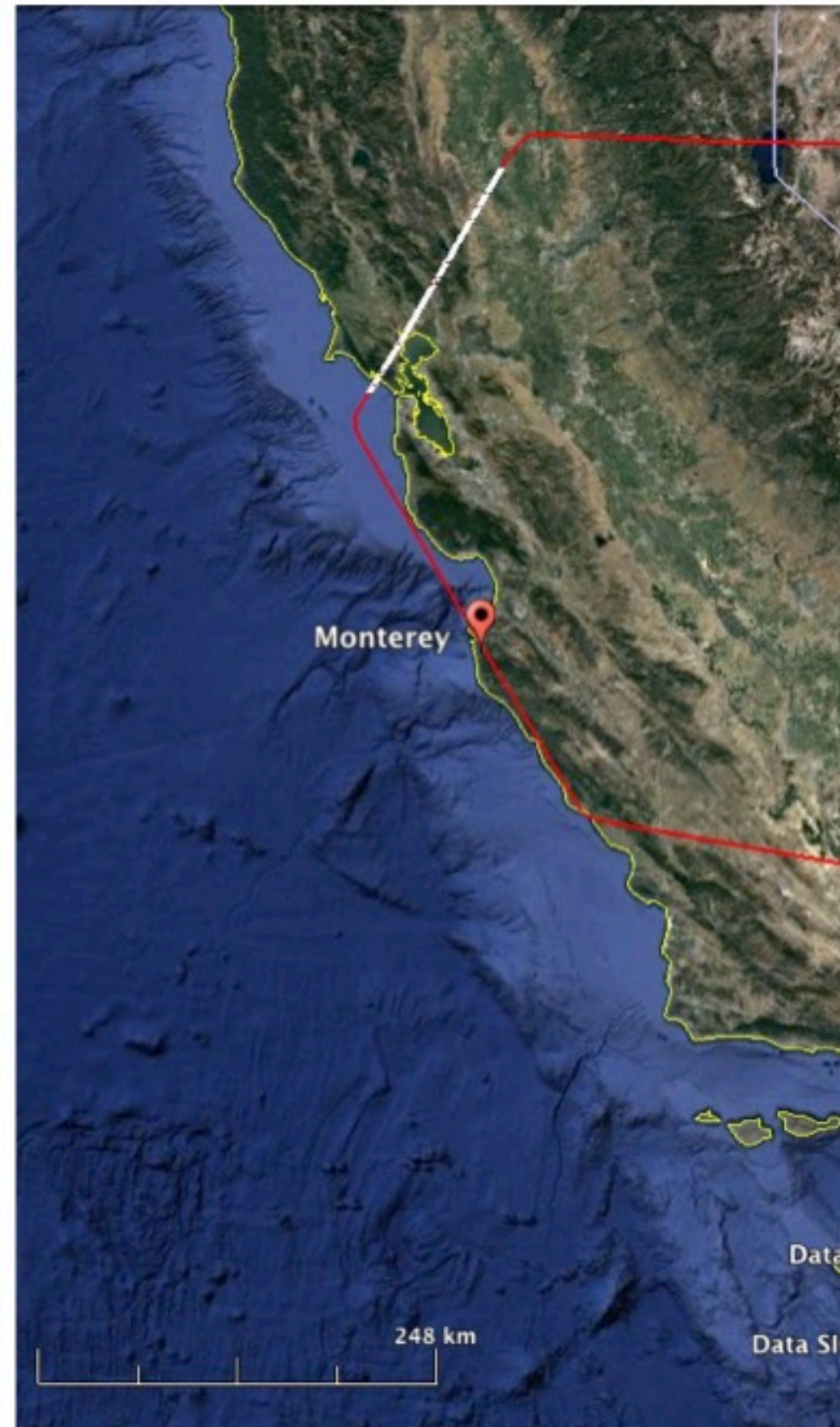
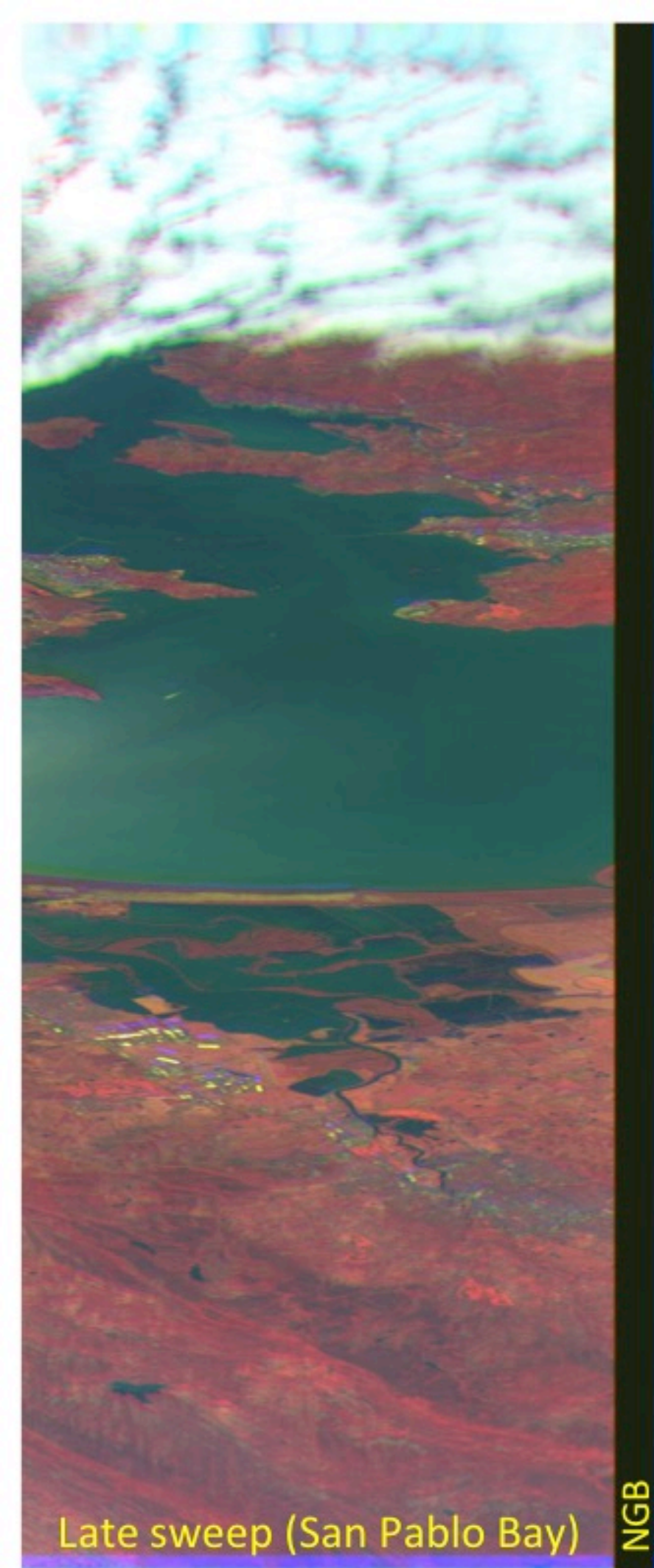
5. Sweeps E-W



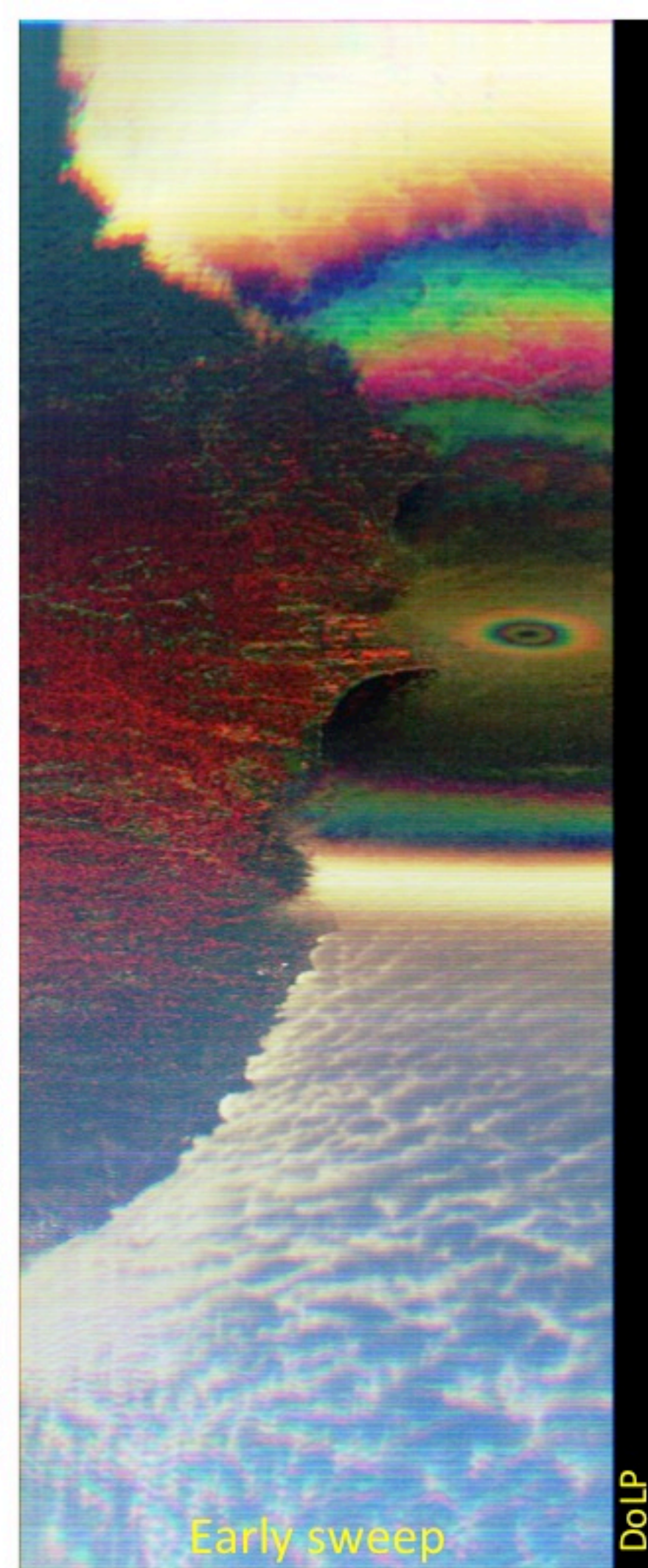
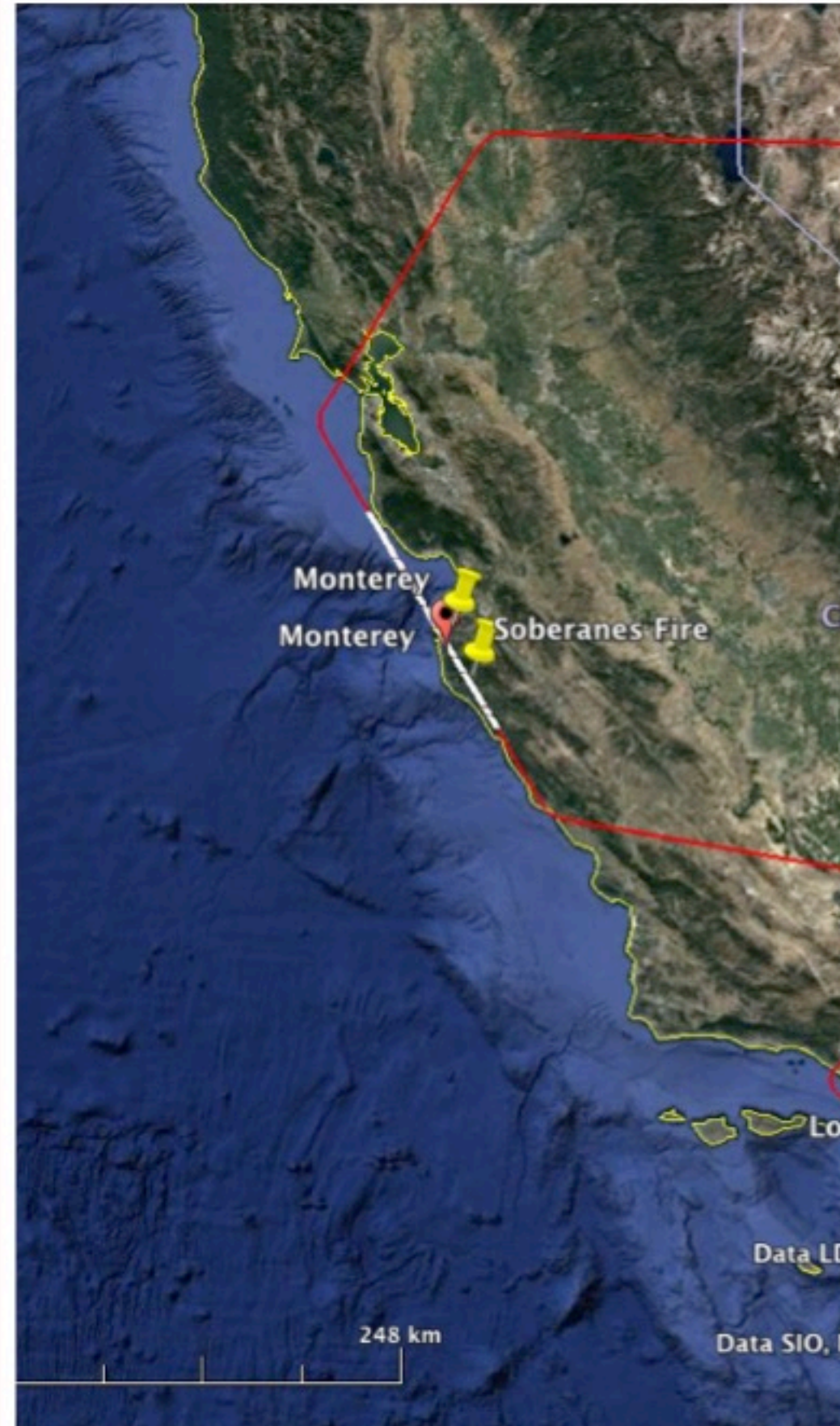
6. Sweeps N-S



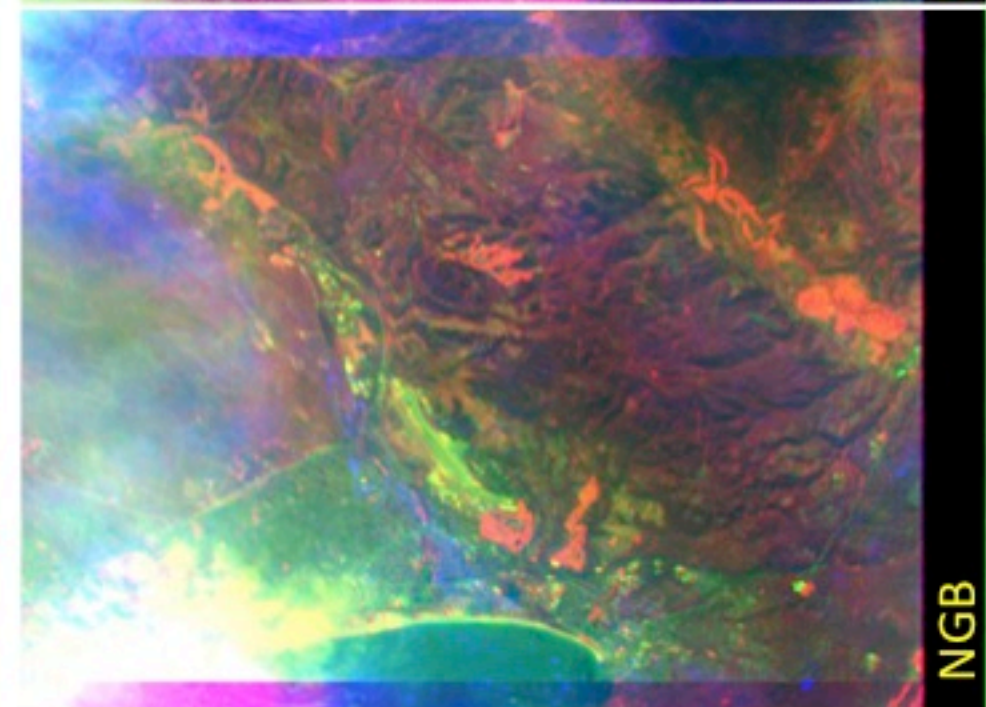
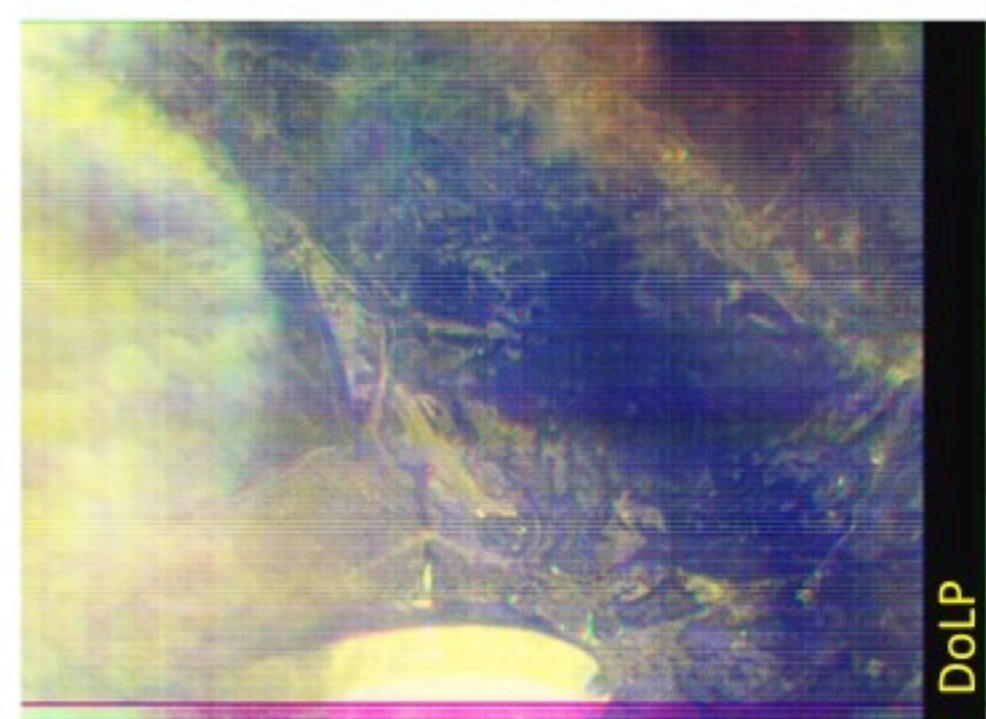
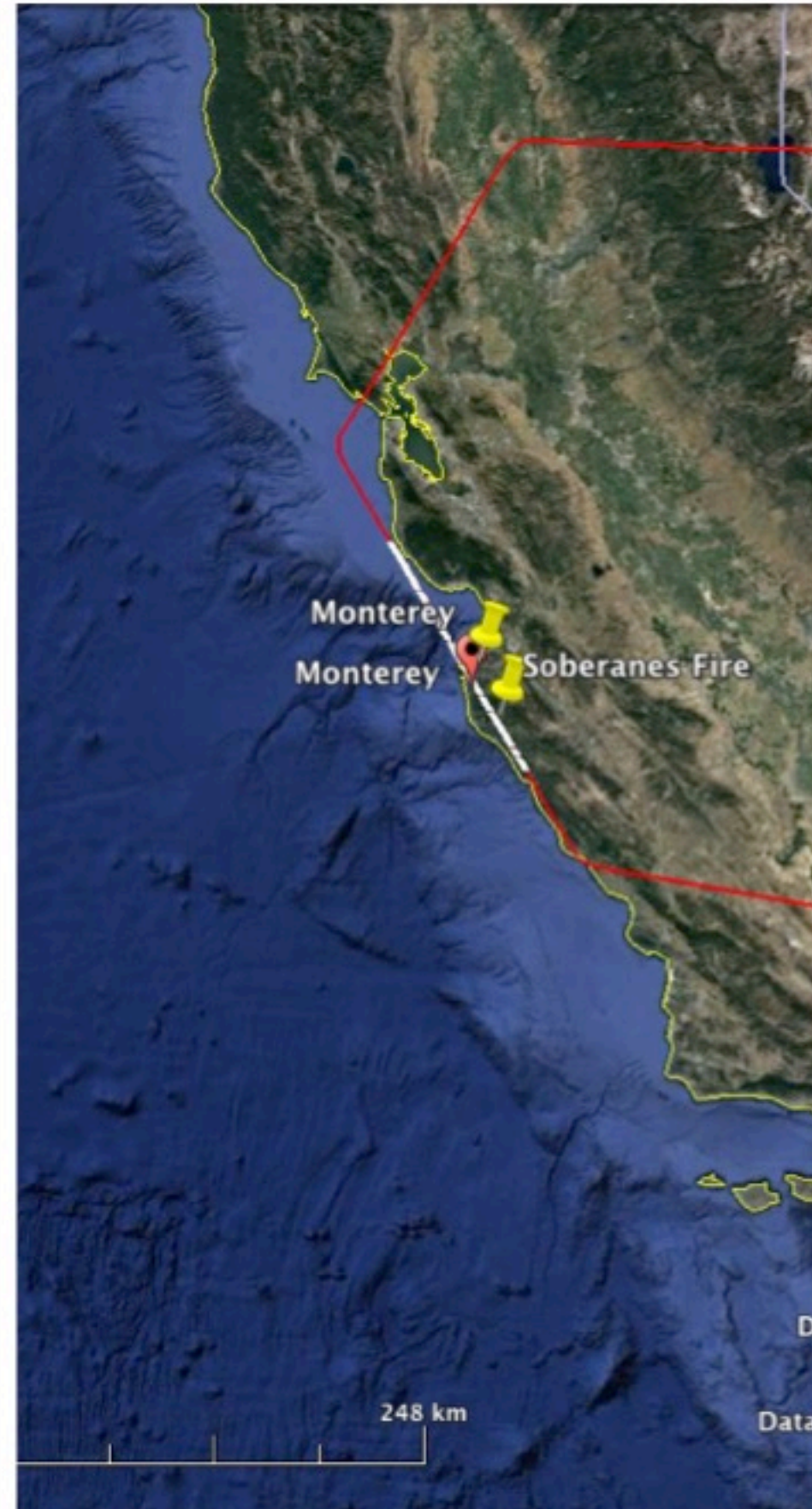
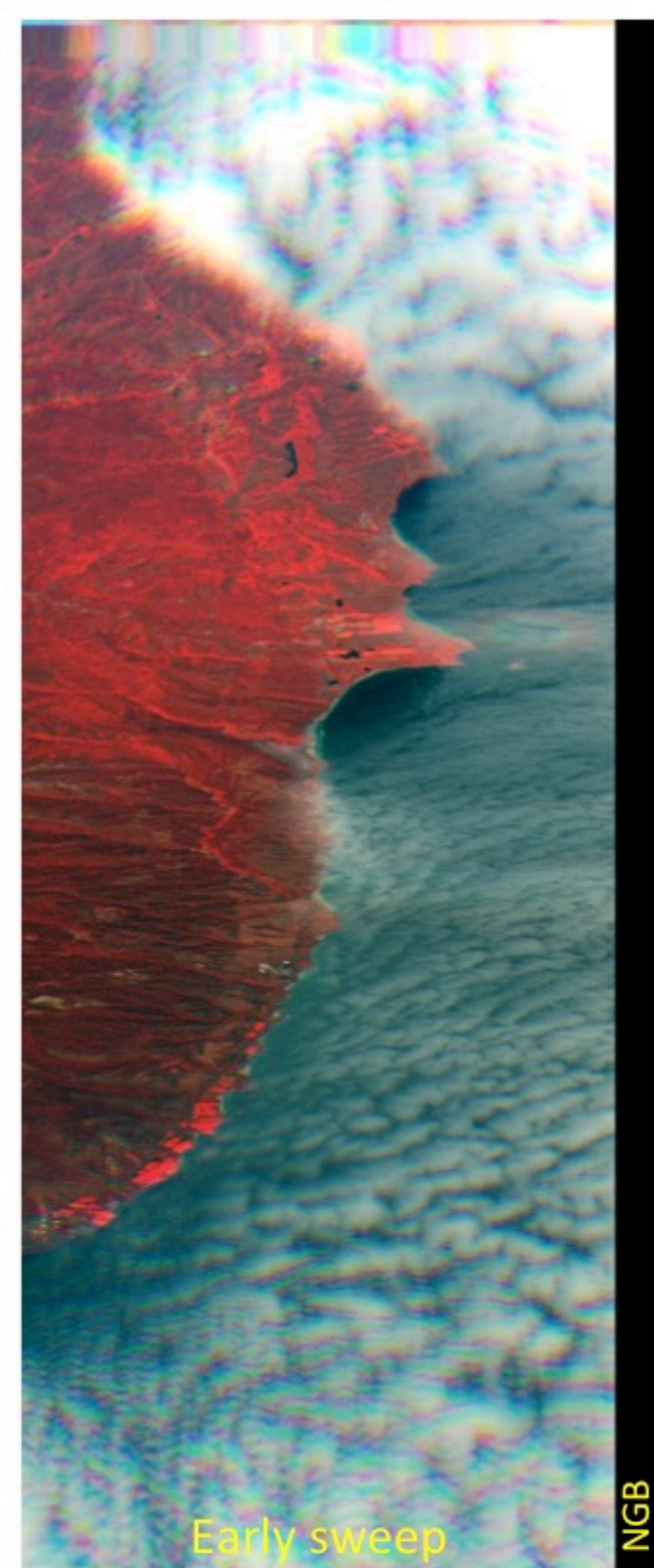
6. Sweeps N-S



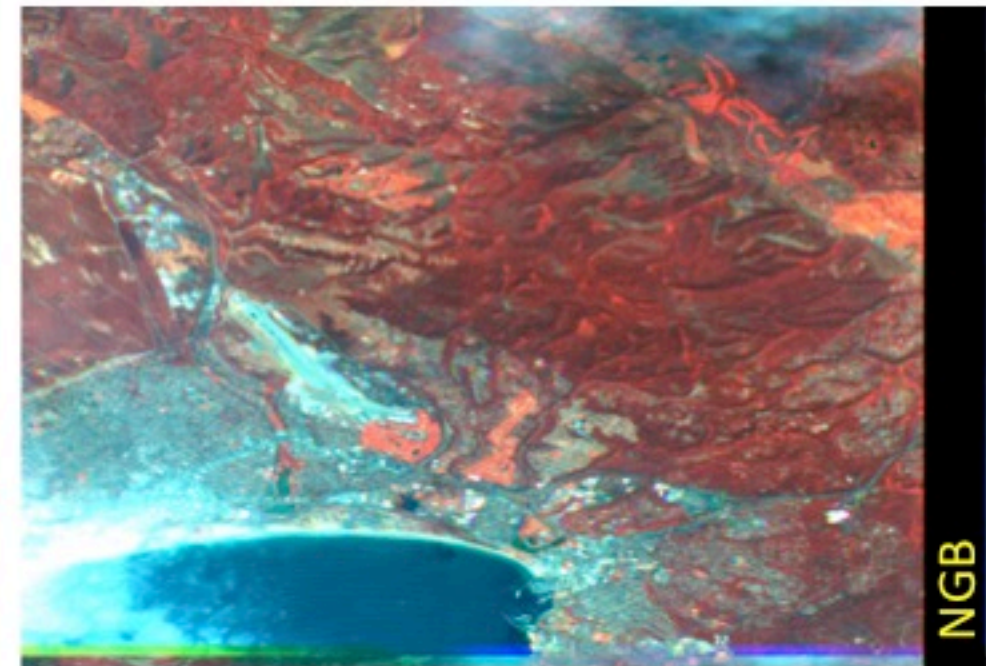
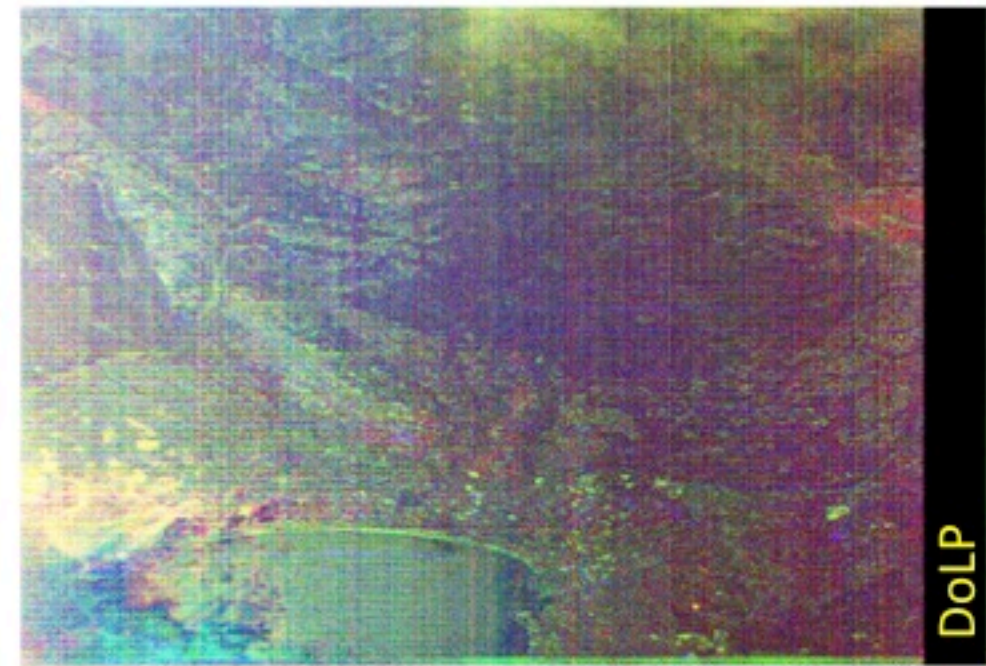
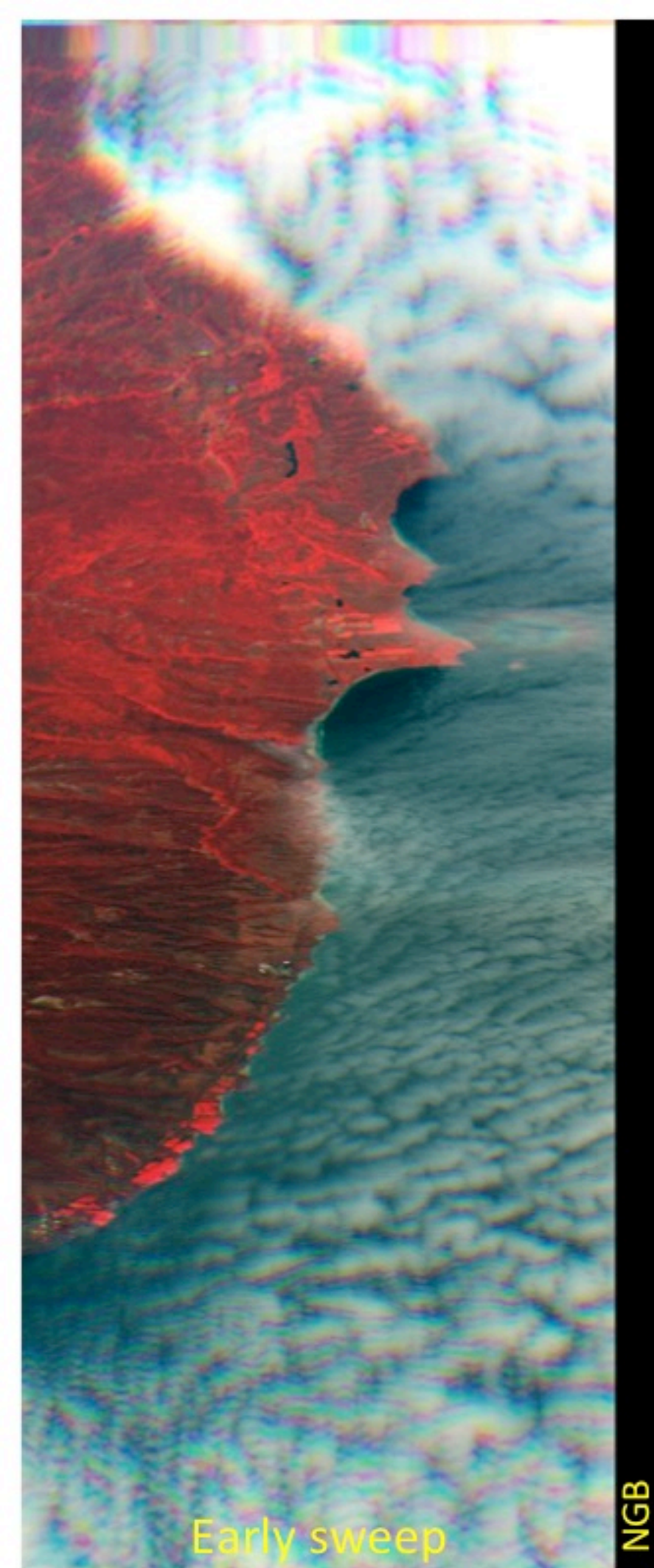
7. Monterey + Sob. fire N-S



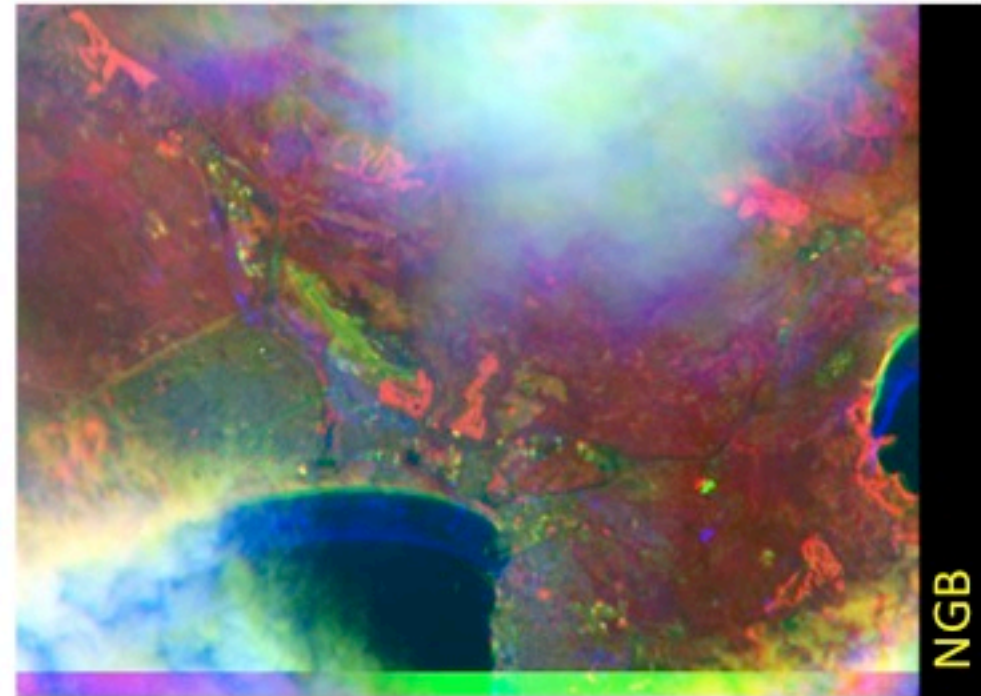
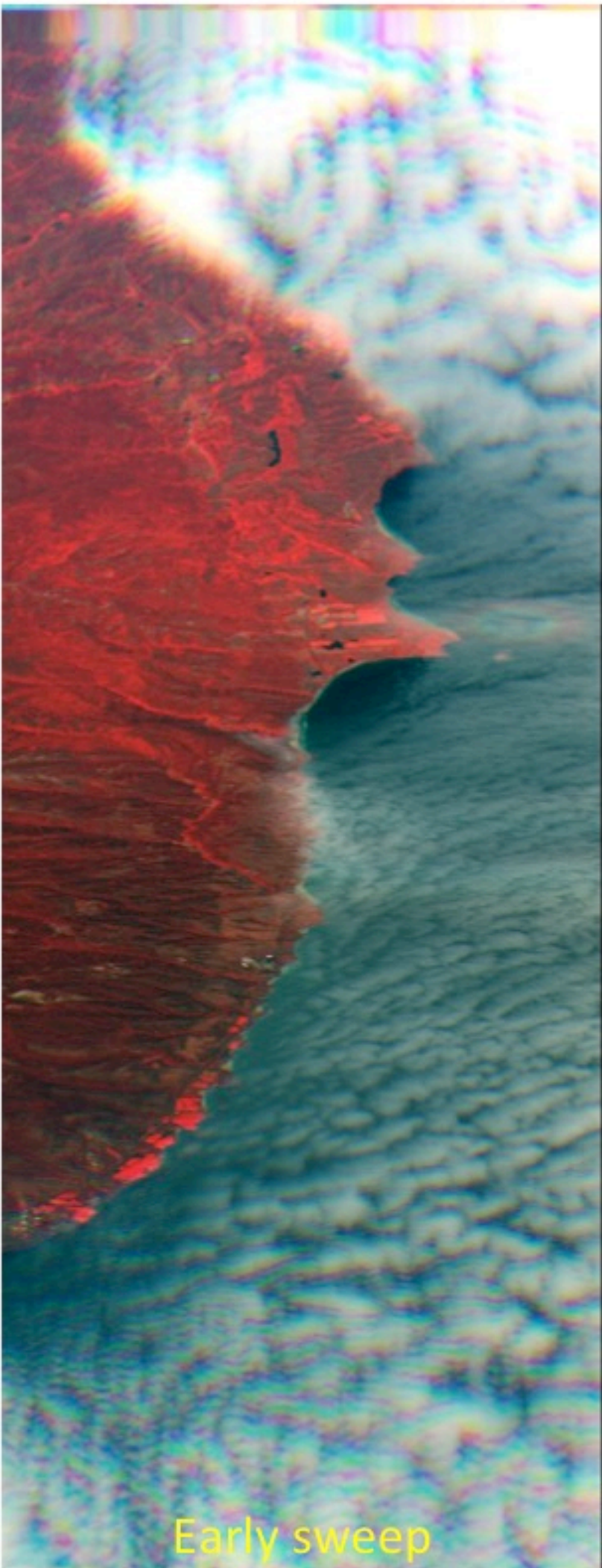
7. Monterey + Sob. fire N-S



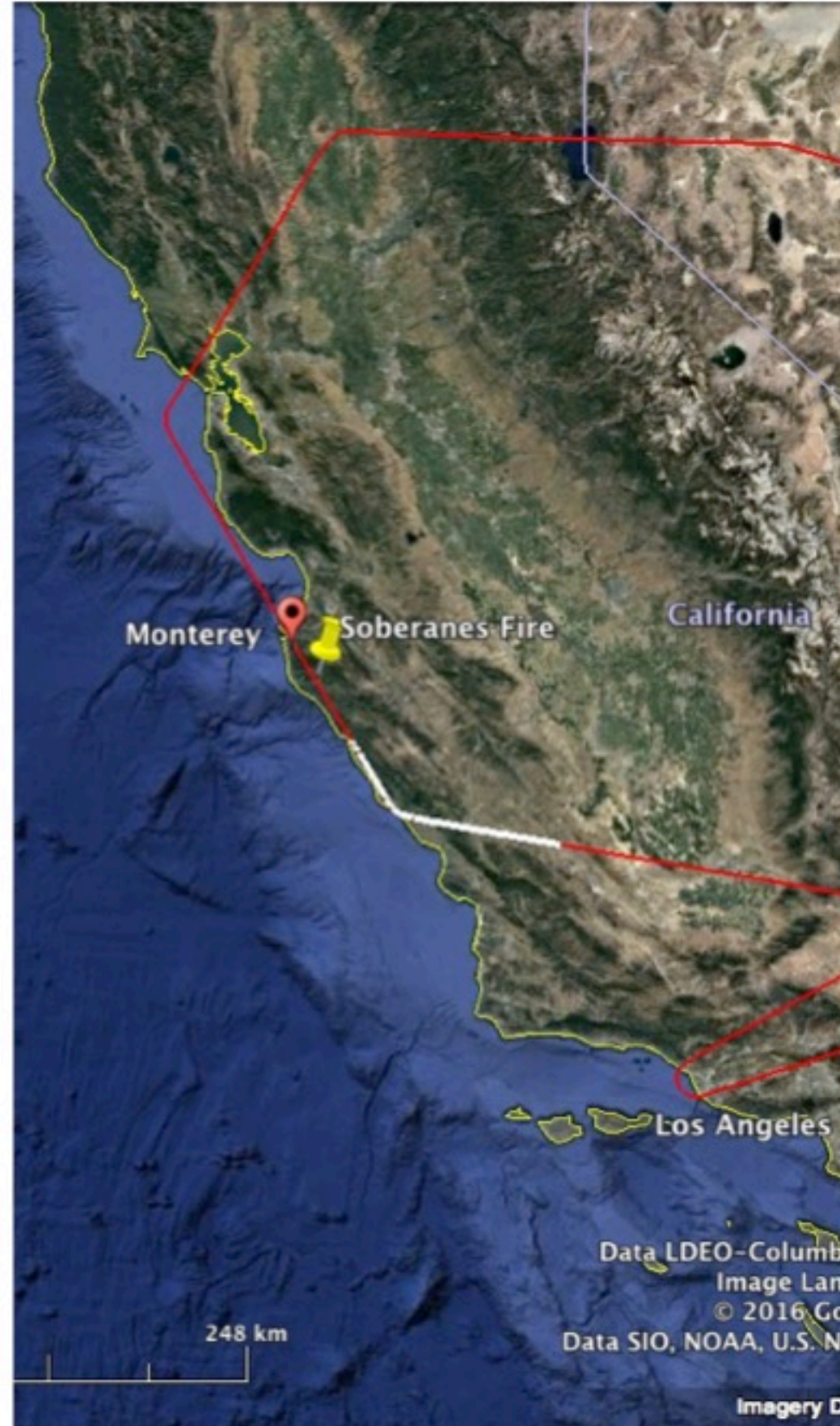
7. Monterey + Sob. fire N-S



7. Monterey + Sob. fire N-S



8. Sweeps NW-SE



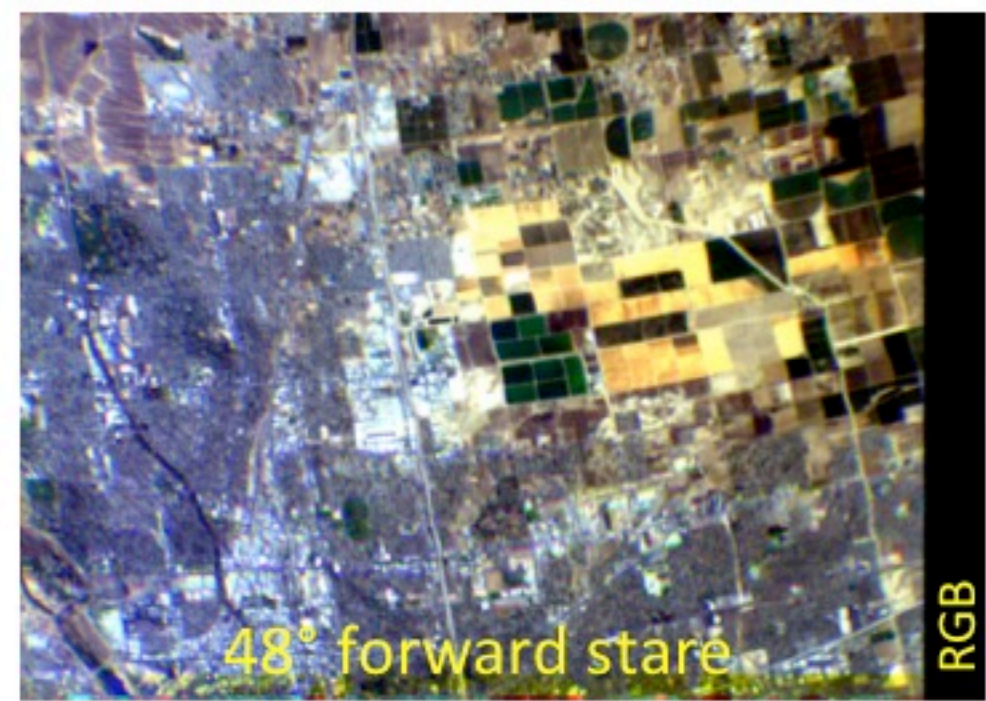
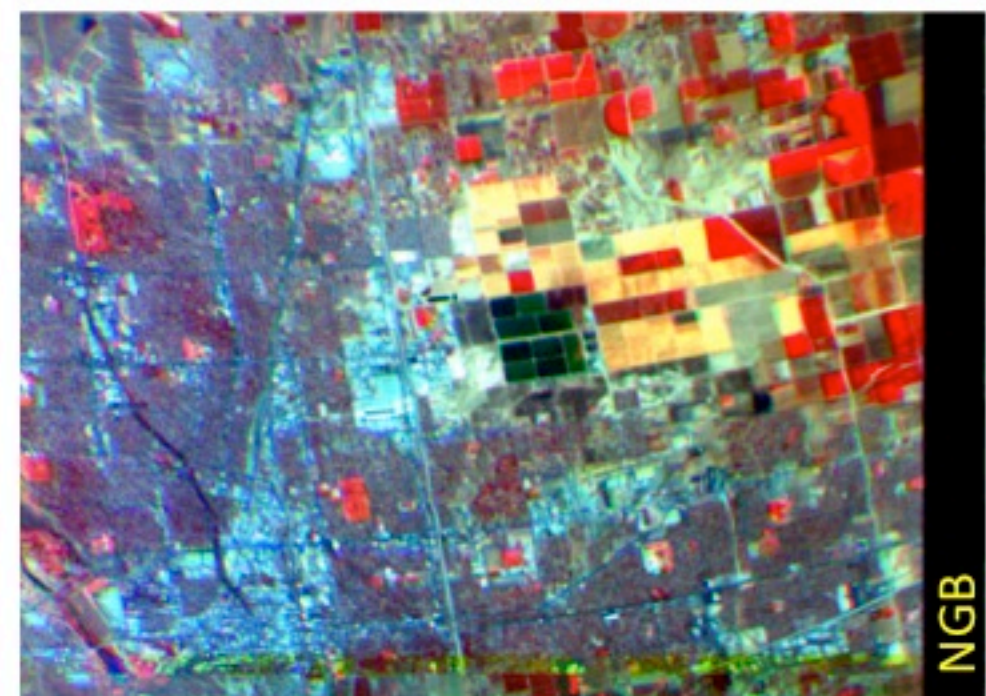
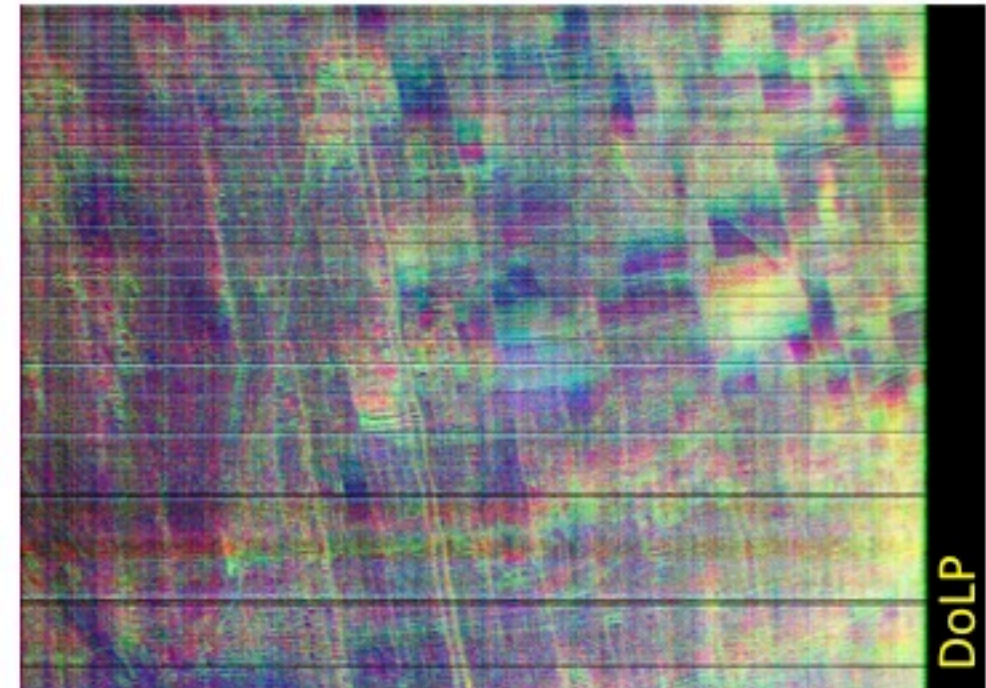
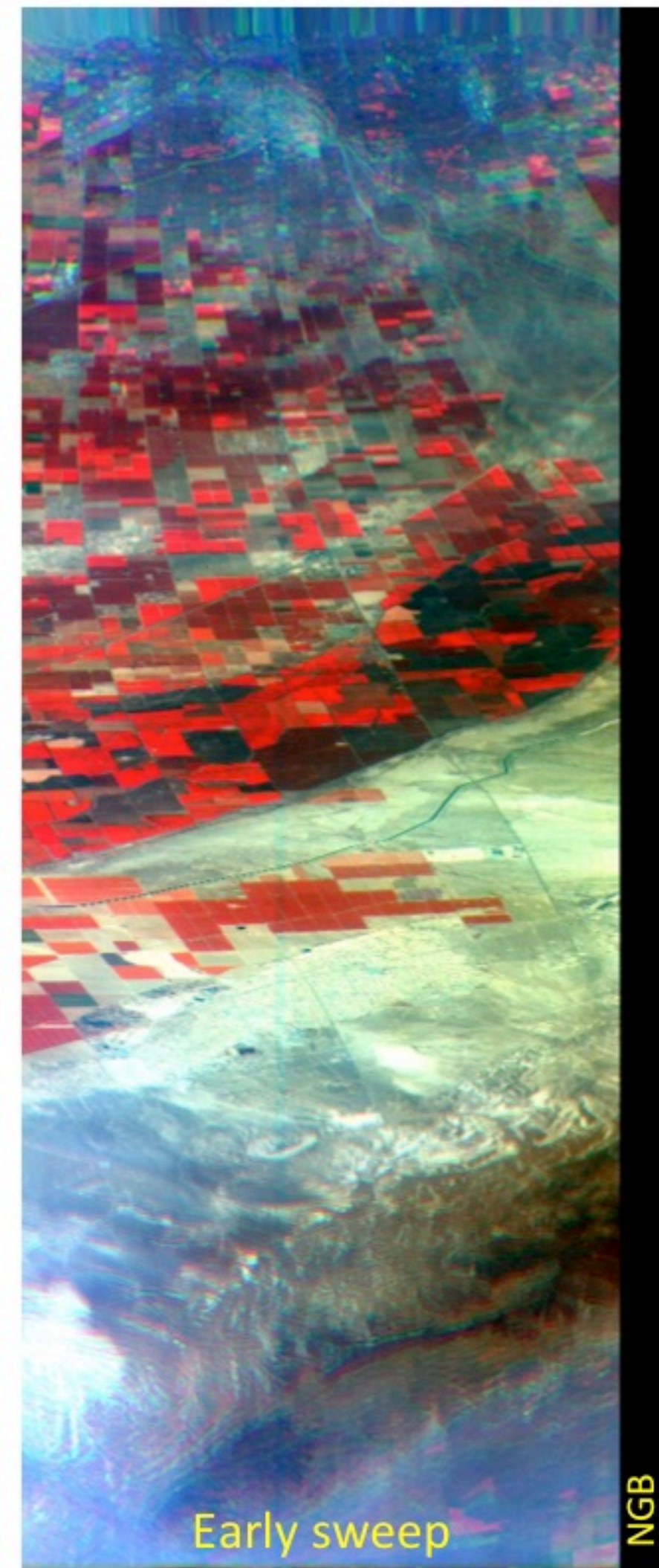
Early sweep

RGB

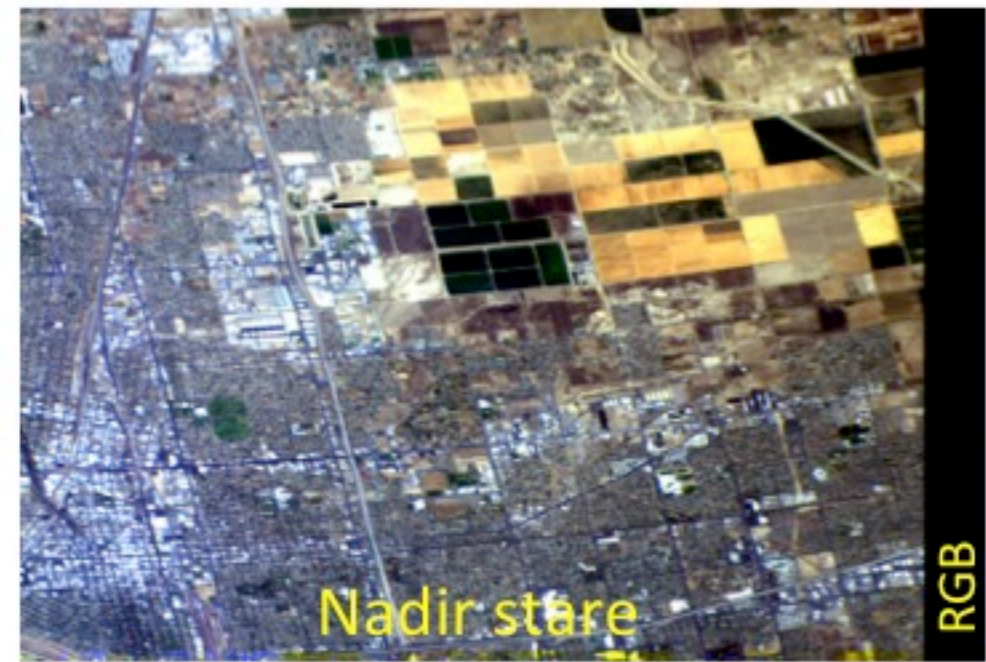
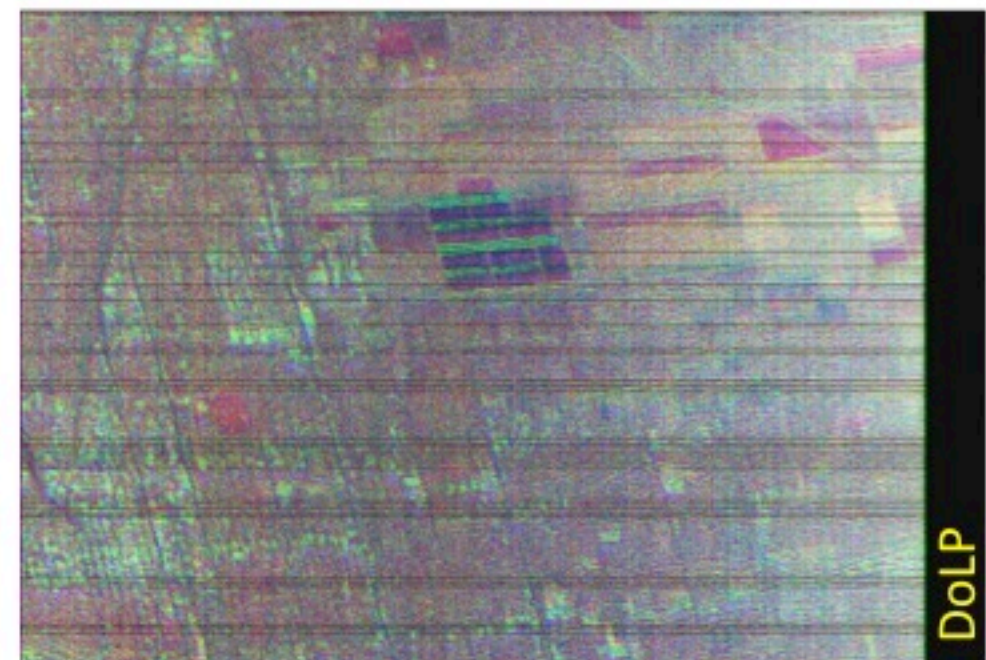
Early sweep

NGB

9. Bakersfield W-E

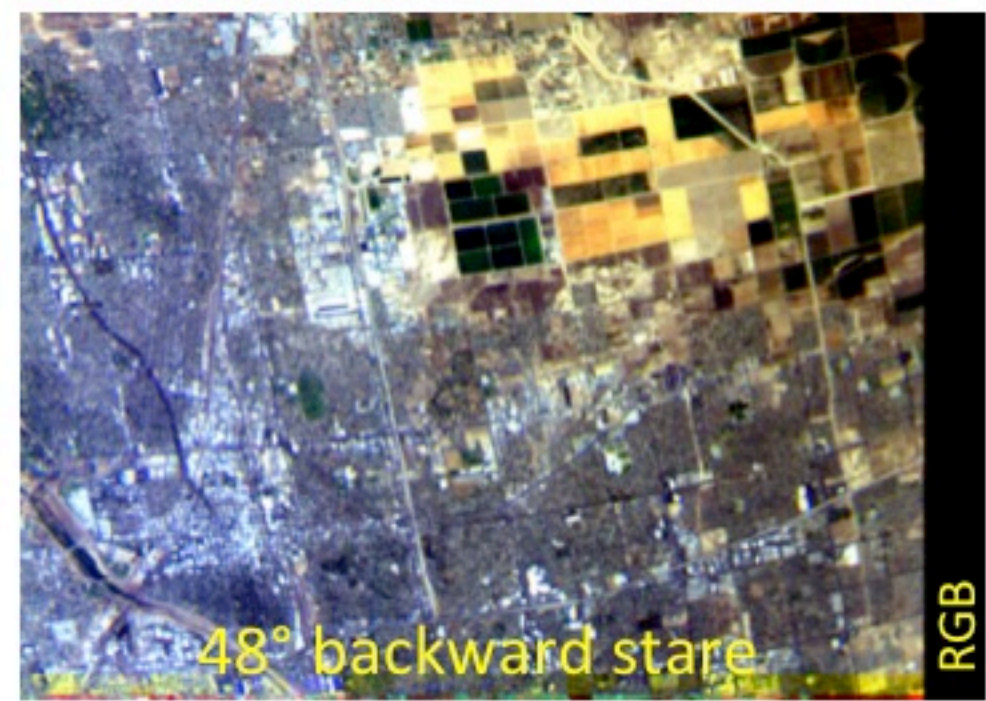
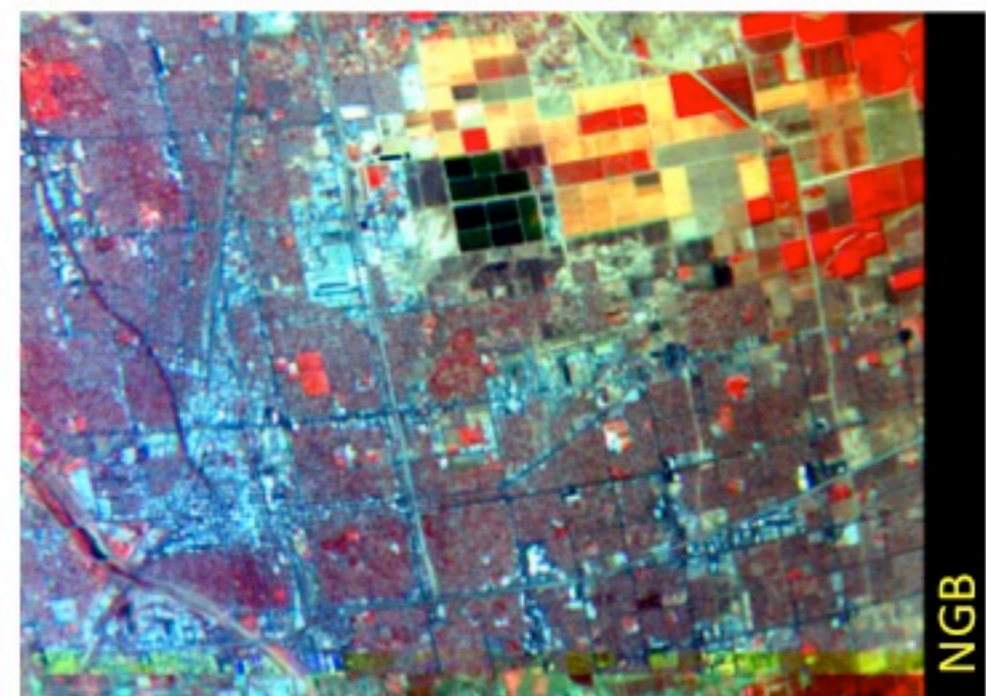
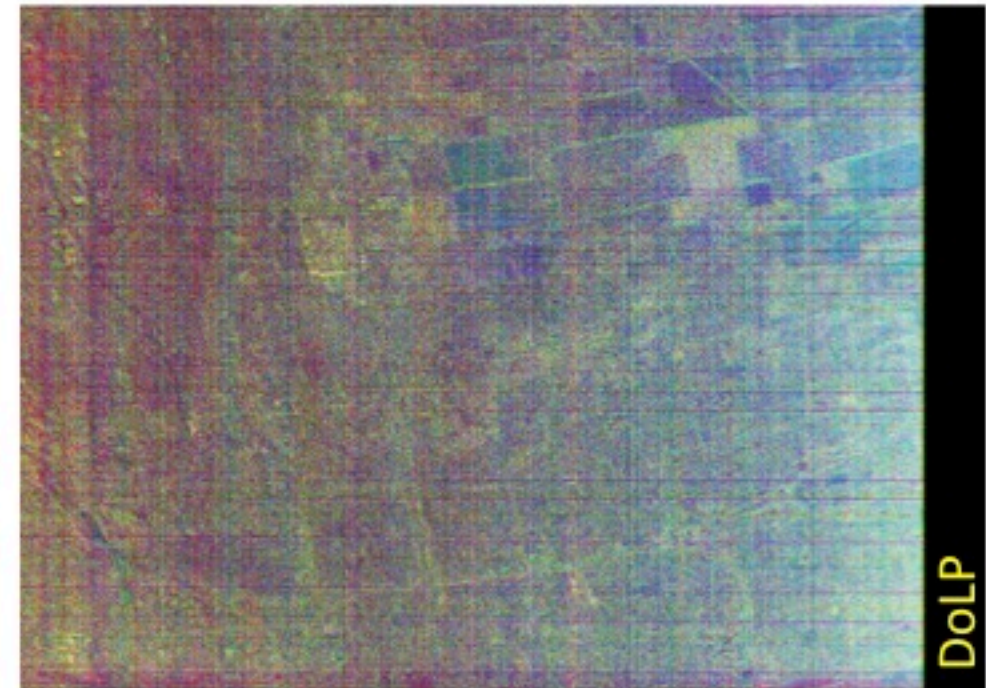
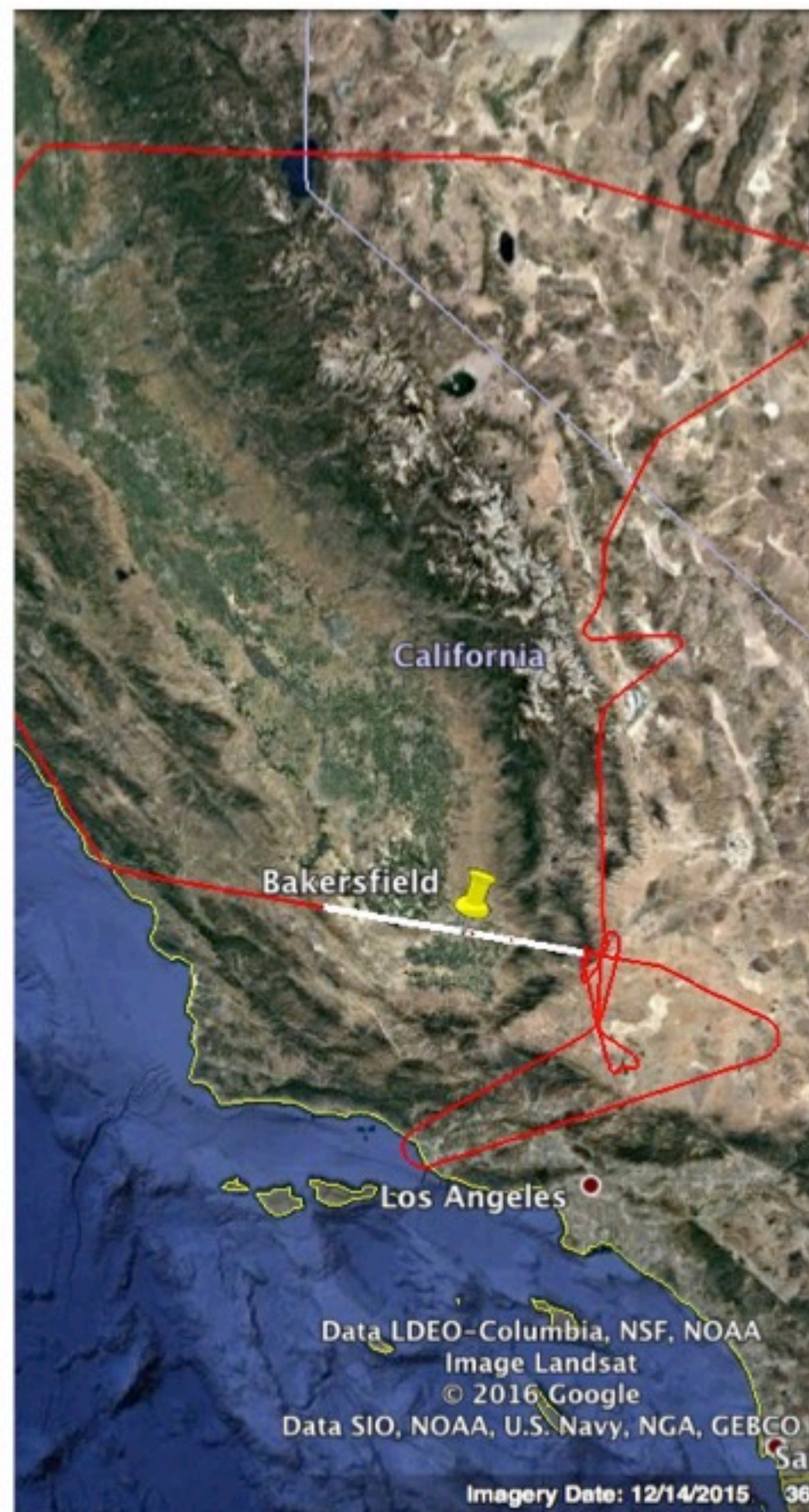
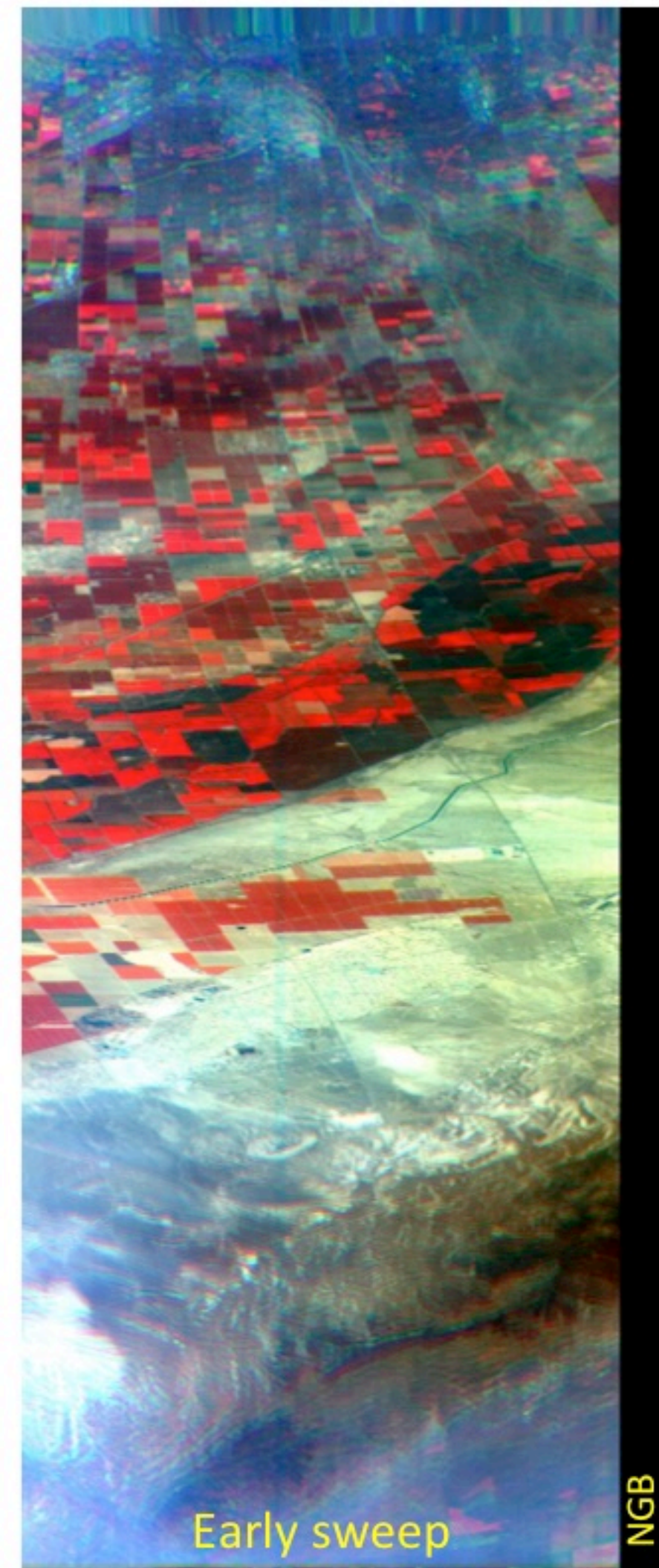


9. Bakersfield W-E

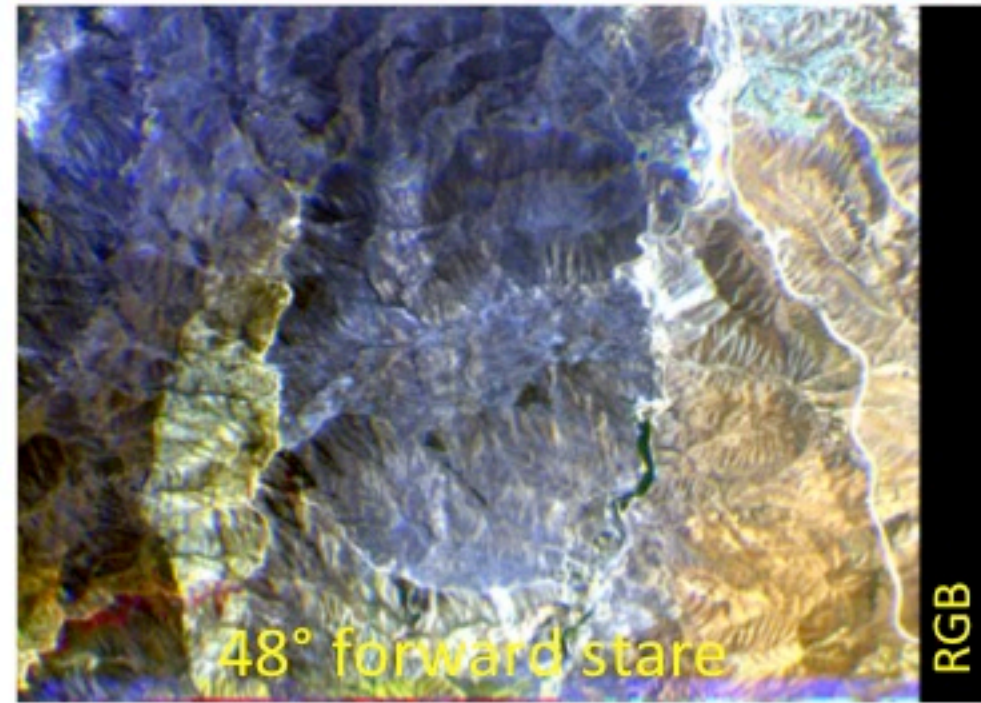
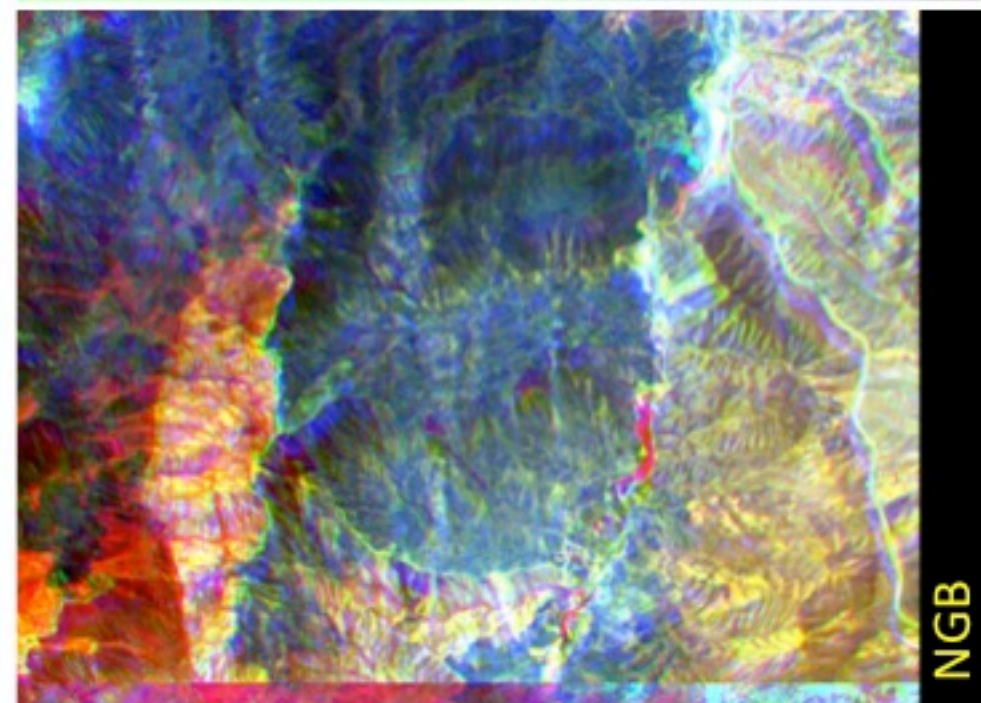


Nadir stare

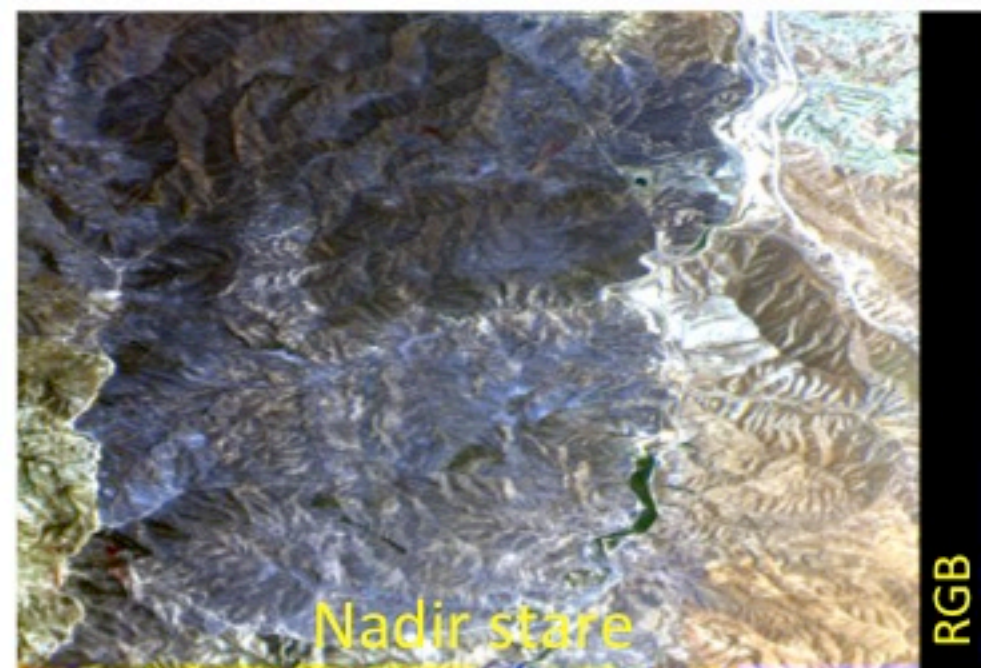
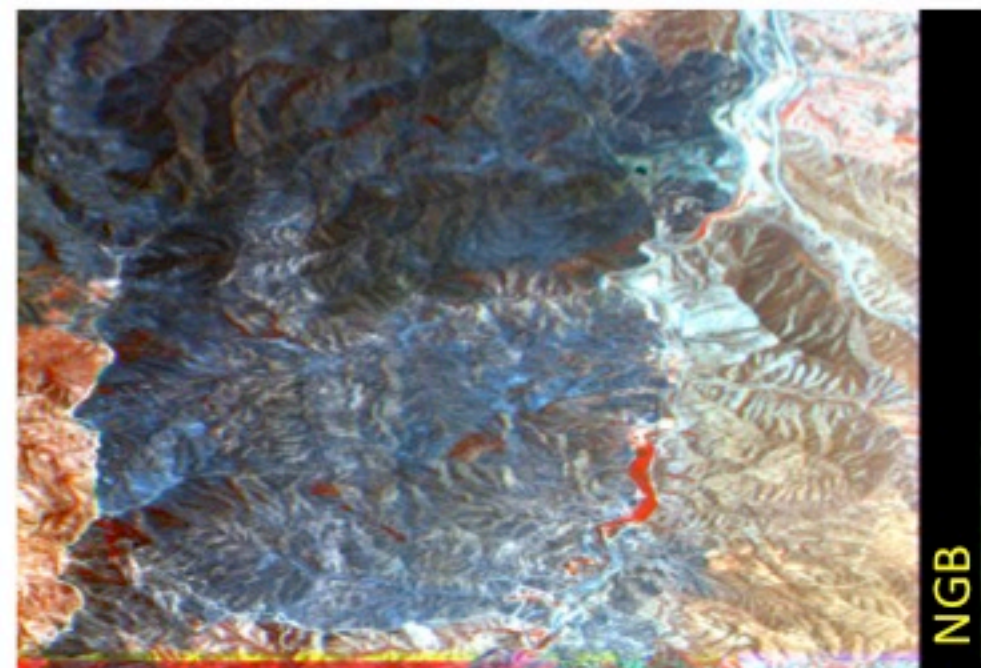
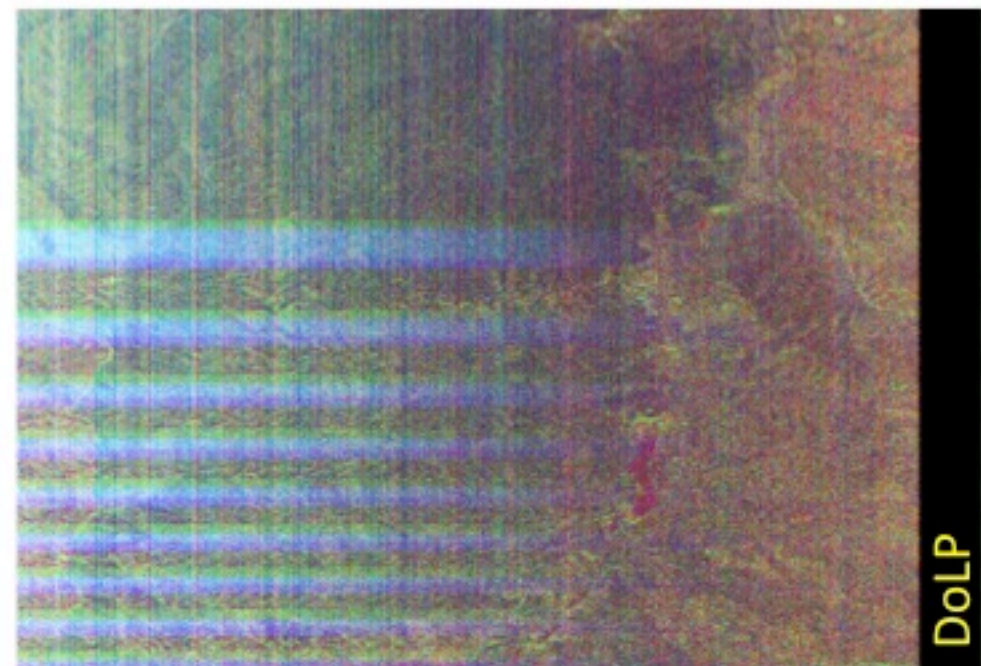
9. Bakersfield W-E



10. Sand fire E-W



10. Sand fire E-W



10. Sand fire E-W

