

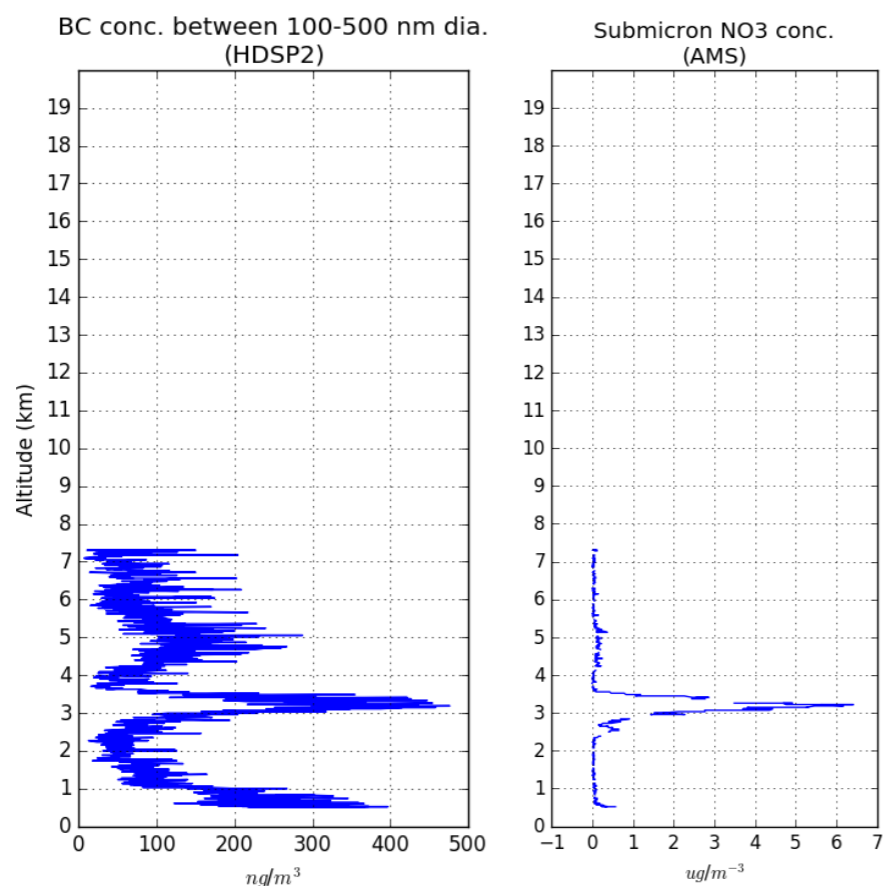
# UW HSRL KORUS-AQ

Tag up Sep 11th 2017

# HSRL Status

- UW HSRL is located at Soul National University in collaboration with Sang-Woo Kim
- Data record: March 2016 - Present
- Data access: [http://hsrl.ssec.wisc.edu/by\\_site/26/bscat/2016/05/](http://hsrl.ssec.wisc.edu/by_site/26/bscat/2016/05/)
- Experiment time period (April -July 2016) QA finished
- Entire record processed and being QA'd by Coda
- Web app integration with satellite observations and model re-analysis

# DC8 in-situ Observations

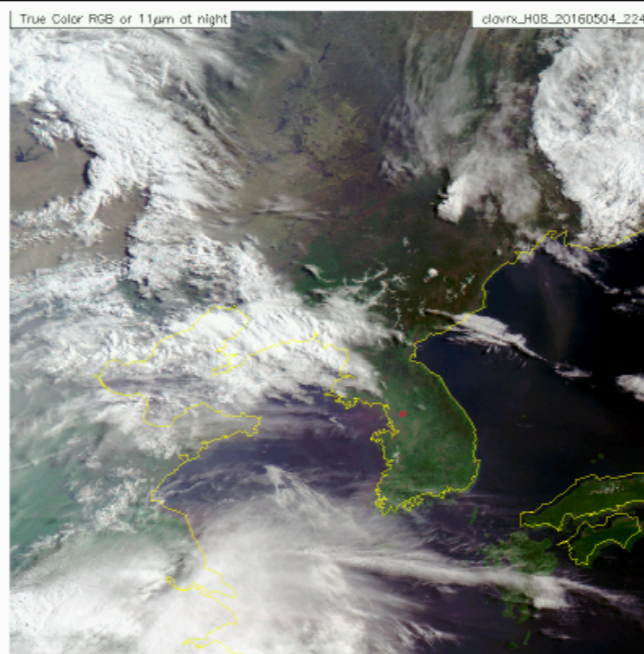
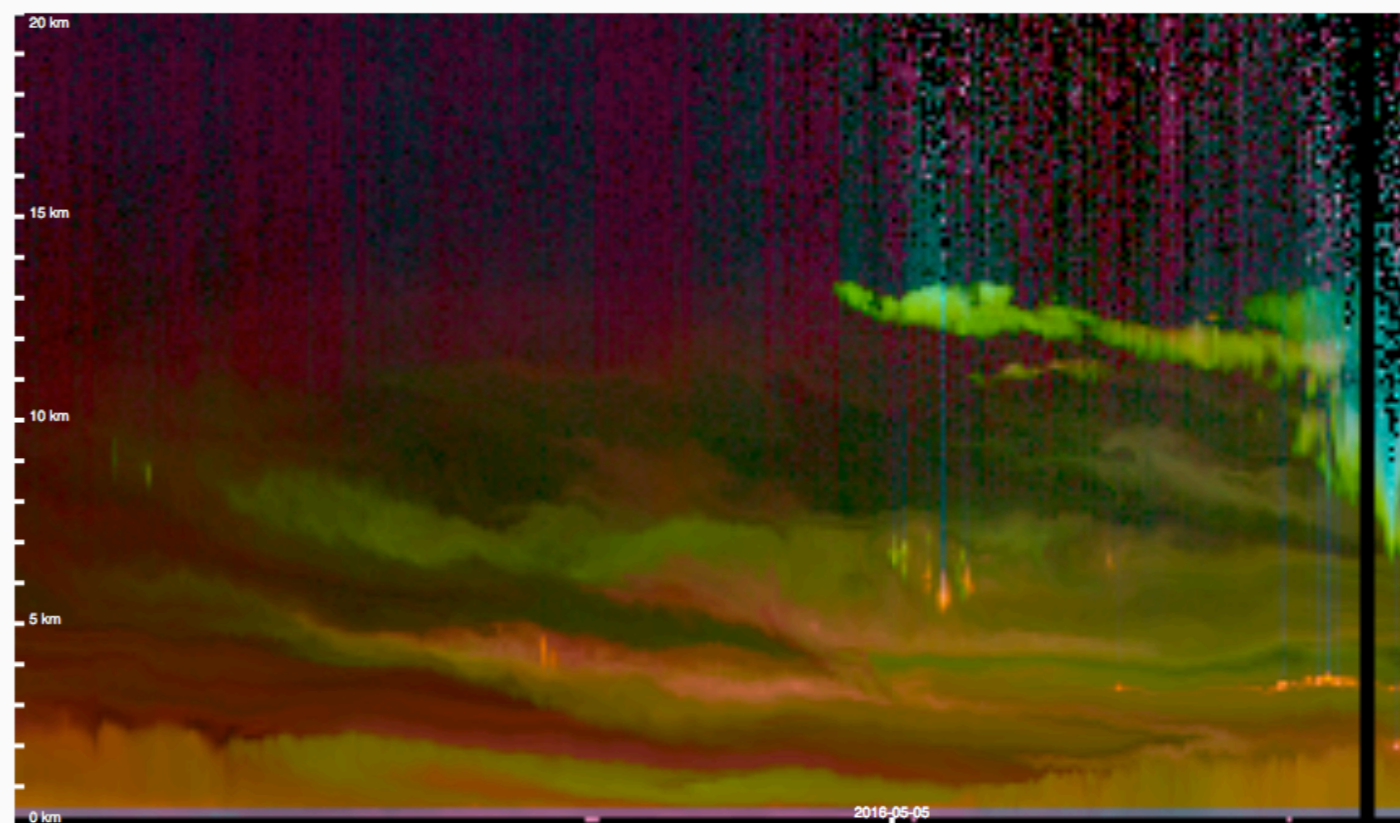


- Dynamic web interface to the HSRL observations satellite (AHI), and model re-analysis
- HSRL imagery uses the color ratio (1064/532 nm), depolarization (532 nm) with the intensity defined by the backscatter coefficient
- Back trajectories computed using FLEXPART applied to the GFS re-analysis
- AHI Imagery generated at SSEC

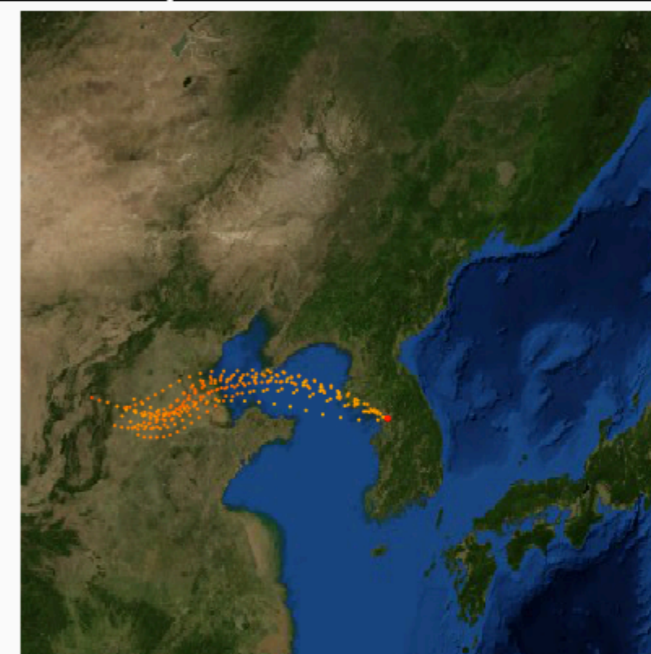
## Slippy Scan

Derived  
  Dewpoint Depression  
  Cloud Type  
  Cloud Height  
 Satellite Type True-Color
 Disable Satellite Load  
  Disable Trajectory Load  
 Goto Date

2016-05-04 22:41 3471m BetaA:  $10^{-5.6}$  Depol: 0.09 Color: 0.63



NAAPS Total Optical Depth for 00:00Z 05 May 2016



Sulfate Surface Concentration ( $\mu\text{g}/\text{m}^3$ ) for 2016050500