

The 1st KORUS-AQ Science Team Meeting(Data Workshop)

1. Venue Information

National Institute of Meteorological Research

The 1st KORUS-AQ Science Team Meeting(Data Workshop) will be held at the National Institute of Meteorological Research(NIMR) in Jeju, Korea from 27 February(Monday) to 3 March(Friday), 2017.

Address of NIMR(National Institute of Meteorological Research)

33, Seohobuk-ro, Seogwipo-si, Jeju-do, Korea

Tel: 82-64-780-6500

Fax: 82-64-738-9071

<http://eng.nimr.go.kr>

Jeju Island(Jeju Special Self-Governing Province)

Jeju Island is the only place where all four Internationally Designated Areas occur at the same location. These include 3 UNESCO World Natural Heritage Site, 6 Biosphere Reserves, 12 Global Geoparks and 4 RAMSAR wetland sites.

Quick Facts about Jeju Island

- Population: 624,394 (51,687,682 in Korea)
- Climate: Subtropical with distinctive four seasons.
- Rainfall (mm): Jeju 1456.9 Seogwipo 1850.8
- Average Temperature (°C): Jeju 15.5 Seogwipo 16.2
- Total Area: 1,848.5km²
- Highest Point: Mt. Halla 1950m

Climate & Weather

The average temperature of February in Jeju Island is 4-12°C(39.2-53.6°F). It is quite chilly in the morning and evening. We recommend that you bring your warm clothes. To find the current weather of Jeju, visit the following website (http://www.holiday-weather.com/jeju_do_island/averages).

Currency & Currency Exchange

The unit of currency in Korea is the Korean Won (KRW). Various notes and coins are used. Notes occur in 1,000, 5,000, 10,000 and 50,000 won denominations, while coins occur in 10, 50, 100, and 500 won denominations. US\$1 is KRW1,140 as of February 16, 2017.

Business Hours

Public business hours are 9:00 to 18:00 Monday through Friday.

Electricity

In Korea, outlets for 220 volts are commonly available. Most hotels provide 220 volts outlets for shavers. Please always check the power supply before using your equipment.

Emergencies

Emergency call numbers are 112 for police, and 119 for fire/rescue and hospital services (though spoken in Korean). A hotel front desk or hotel manager can arrange for a doctor or an ambulance. In addition, International SOS Korea (02-790-7561) provides a 24-hour emergency service for foreigners, acting as a link between patients and Korean hospitals with a charge. BBB offers translation service by volunteers using cellular phones, to reduce language difficulties that foreign tourists might experience during their visit to Korea. <http://www.bbbkorea.org/>

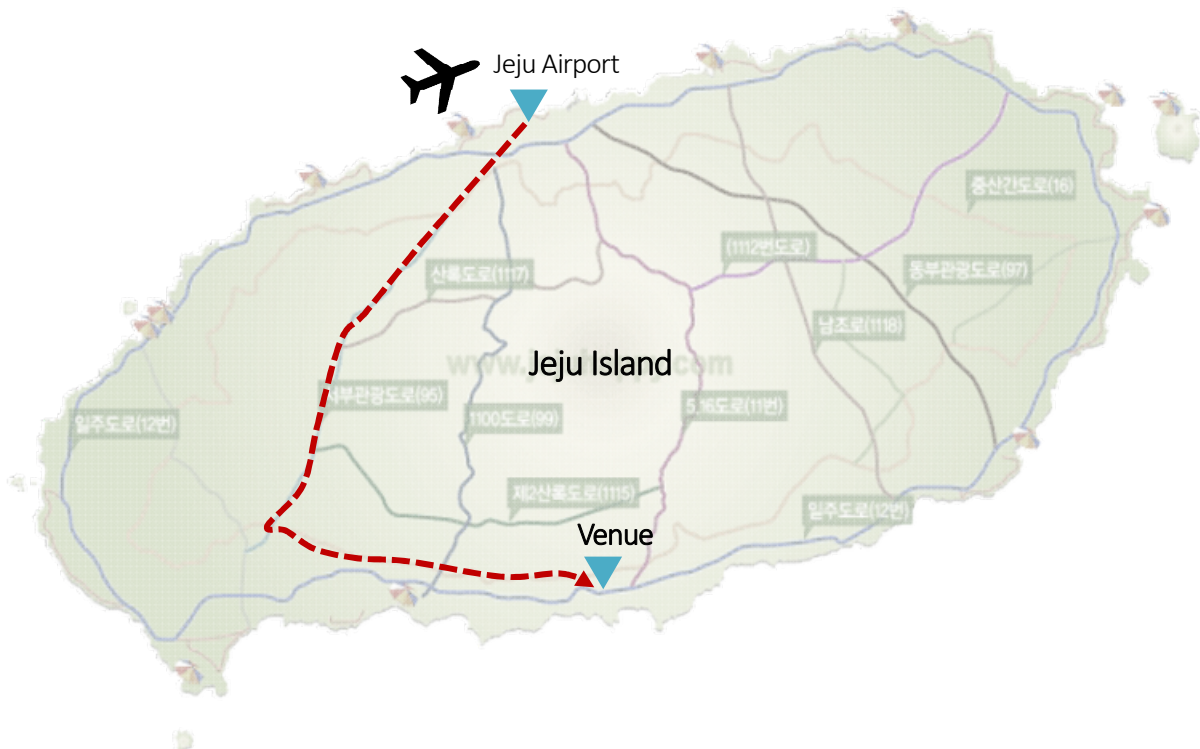
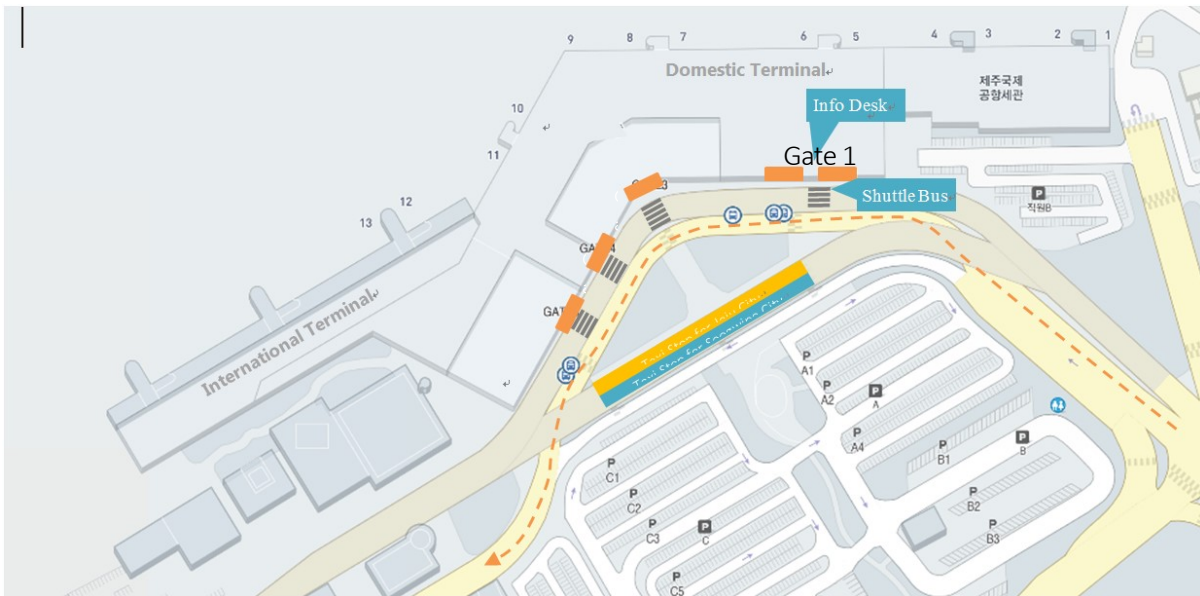
2. Transportation in Jeju

Information Desk at Jeju International Airport

Upon your arrival to Jeju, Information Desk for the 1st KORUS-AQ Science Team Meeting has been arranged at Gate #1 of the Domestic Line of Jeju International Airport. For any assistance, please approach the info desk on February 25-26.

Shuttle Bus

Shuttle service has also been arranged for the participants between the Jeju airport and your accommodation, Ramada Encore & Encore East Hotel, located just nearby. From the airport to your hotel, it takes 60-70 minutes by shuttle bus. A staff at the information desk which is located in front of the arrival gate will guide you to a shuttle bus stop.



3. Meeting Information

Accommodation

Two hotels, Ramada Encore East Hotel and Ramada Encore Jeju Seogwipo Hotel, are located 5 minutes' walk from the NIMR and across the street from each other. Recently opened in April, 2015, this hotel has convenience store, fitness club and a restaurant, café, and so on. WIFI is available in the room. Check-in time is 3PM and Check-out time is 12PM. noon. Breakfast is available at a restaurant in the hotels.



Meeting Room

The main meeting room is Halla Hall located on the 1st floor of NIMR.

Language

The official language of the Meeting is English, and all sessions will be conducted in English.

Poster Presentation

For poster presentation, poster board will be set up at the lobby of B1, 1F of NIMR.

Poster Exhibition: from Monday 27 February to Thursday 2 March, at the lobby of B1, 1F of NIMR

(Poster presenter is advised to put up the material before 09:00 am, Monday 27 February.)

Presentation time: 16:15-18:00, Monday 27 February and Tuesday 28 February

(Please refer to the program schedule for the details)

Registration & Information Desk

Registration desk will be located in the lobby of NIMR, B1(or 1F) during the meeting

Message and Announcement Boards will be set up in the registration where participants can get useful information from the secretariat or other participants.

Attire

Business Casual is recommended for Welcome Reception and Meetings

Meals

NIER will prepare for you a Welcome Reception on 27 February and light lunch boxes after the morning session. If you have an allergy and special dietary requests, please inform us by 23 February in order to arrange your food in advance.

_ **Lunch Time:** 12:45 – 14:15 Monday, 27 February thru Friday, 3 March (except tour day on 1 March)

_ **Lunch Place:** Olle Hall, 1st floor, Dining Hall, B1 and outdoor of NIMR building

_ **Shuttle Bus for Dine Around:** There are not many restaurants near your hotel. For your dinner time, secretariat will provide you roundtrip shuttle buses to Seogwipo Daily Olle Market (10-15 minutes distance by bus) from 28 February to March 2. Bus schedule will be posted on message board in NIMR.

Welcome Reception

You are cordially invited to join us at the Welcome Reception hosted by National Institute of Environment Research(NIER). The place for the reception is located about 20 minutes' away by bus.

_ **Where & When:** Ocean View, International Convention Center(ICC Jeju), 18:30-20:00, Monday, 27 February

_ **Bus Departure:** 18:10, Monday, 27 February, NIMR

Coffee break

Coffee will be prepared at the lobby of main meeting room.

4. Tours

Tours are planned to enhance your meeting experience in Jeju in the afternoon of Wednesday 1 March. All Participants are advised to confirm the tour course to join at the information desk by 2PM, 27 February(Monday).

- **When:**12:45-18:00, Wednesday 1 March
- **Bus Departure:** Bus for each tour course will wait for you at Ramada Encore and Encore East Hotel at 12:45
- **Things to Bring:** a comfortable and warm jacket, warm gloves and trekking shoes, 10,000 won for lunch

Course 1: Seaside Jeju Olle Trekking

Walking Distance: 10,1 km (approx..3 hours)

Trekking Route: Jeju Olle Route 7

Course 2: Osulloc Tea Museum & Dragon Head Coast Trekking

Walking Distance: 1km (approx.. one hour)

Trekking Route: seaside Dragon Head Coast, UNESCO Geopark Site

4. Secretariat

Secretariat Office

The Secretariat office will be located in Suwol Hall, 2F of NIMR.

Contact Information

Dr. Joon Young, Ahn

Tel: +82-32-560-7274

Mobile Tel: +82-10-5066-6502

E-mail: nierair@korea.kr

Ms. Yoon Seo, Park

Tel: +82-32-560-7314

Mobile Tel: +82-10-2858-3415

E-mail: pys1010@korea.kr

Ms. Soon Sun, Kim

Tel: +82-64-900-6053

Mobile Tel: +82-10-4473-1720

E-mail: sskim@hessedjeju.com

Ms. Mi Jeong, Hyeon

Tel: +82-64-900-4050

Mobile Tel: +82-10-6382-1940

E-mail: mijeong@hessedjeju.com