

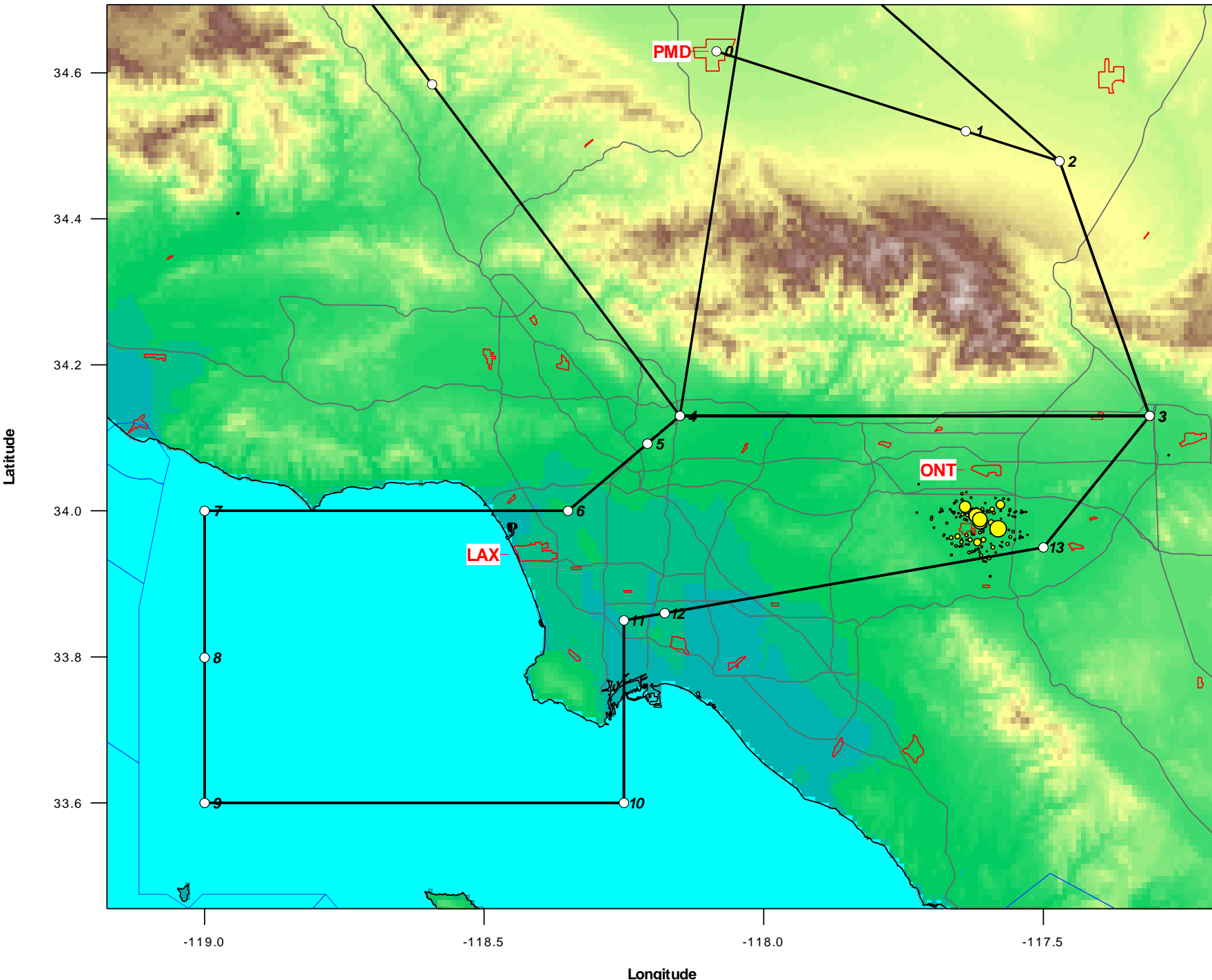
Draft DC-8 LA Basin & SJV survey flight track July 22 - transit flight to Boise

Low-altitude DC-8 transects in Los Angeles Basin, San Joaquin Valley, and then again in LA Basin to provide a snapshot of emissions, transport, and chemistry

Vertical profiles to sample layers & aged air aloft

DC-8 lidars remotely map mixing heights and ozone/aerosol layers above and below the aircraft

- Assumes:
 - appropriate meteorological conditions
 - absence of fire smoke in the Central Valley
 - absence of major fires elsewhere



Draft DC-8 LA Basin detail

2 laps proposed, before and after SJV pattern

Data between 3 and 4 was most informative in CalNex 2010 flights

DC-8 nav comment – should be feasible, but limited flexibility on these points due to ATC constraints

Draft DC-8 LA and SJV survey flight altitude profile

